

5927 1 SE
VPCS/VILLE

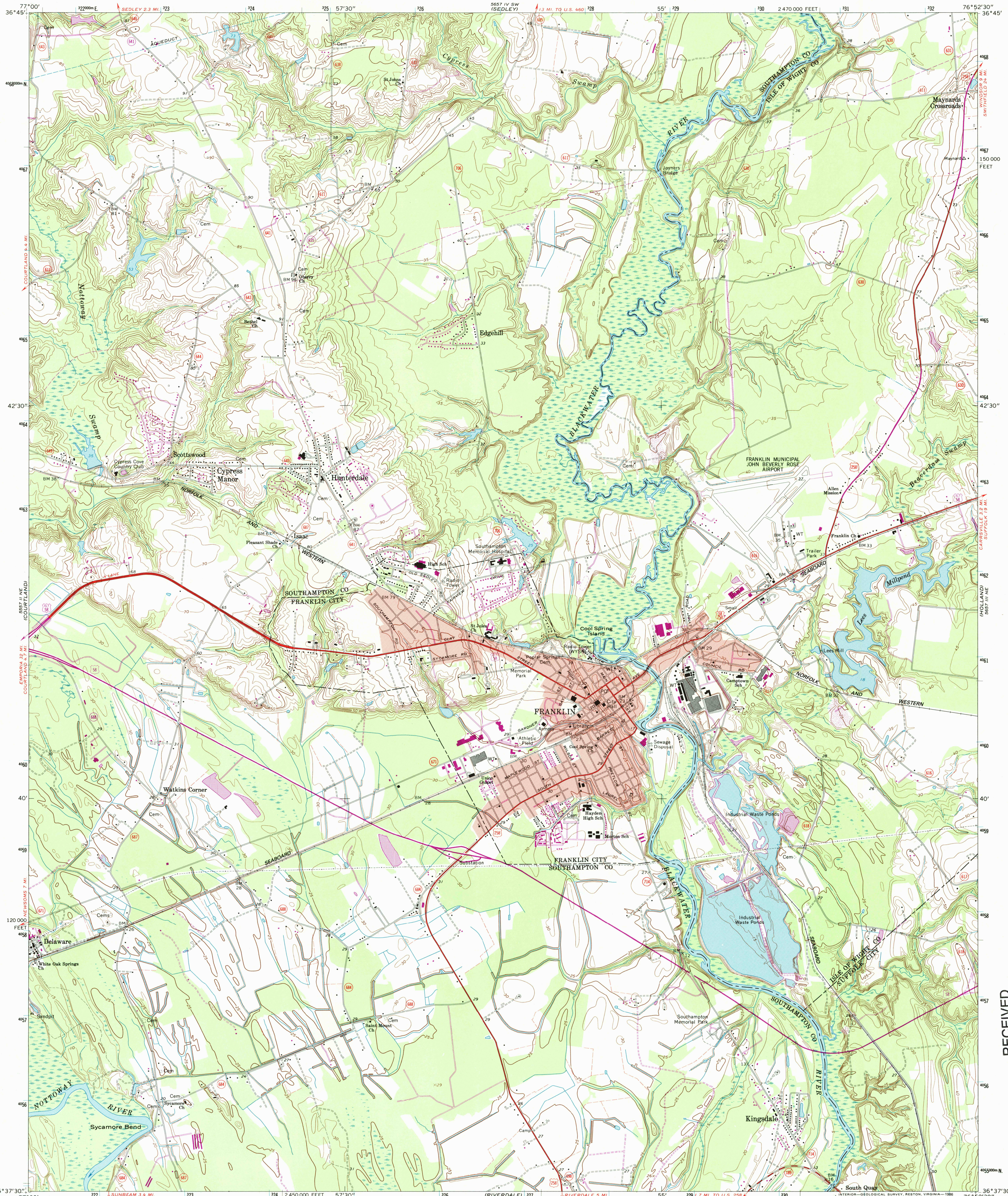


U.S. DEPARTMENT OF THE INTERIOR
U.S. GEOLOGICAL SURVEY

COMMONWEALTH OF VIRGINIA
DIVISION OF MINERAL RESOURCES

FRANKLIN QUADRANGLE
VIRGINIA
7.5 MINUTE SERIES (TOPOGRAPHIC)

5927 1 SE
VPCS/VILLE



5927 1 SE
VPCS/VILLE

Mapped, edited, and published by the Geological Survey

Control by USGS and NOS/NOAA

Topography by photogrammetric methods from aerial

photographs taken 1964. Field checked 1967

Polyconic projection. 10,000-foot grid based on

Virginia coordinate system, south zone

1000-meter Universal Transverse Mercator grid ticks,

zone 18, shown in blue. 1927 North American Datum

To place on the predicted North American Datum 1983

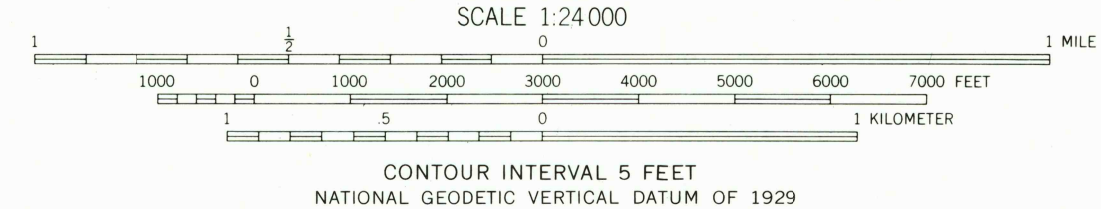
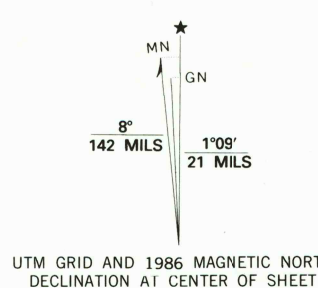
move the projection lines 12 meters south and

29 meters west as shown by dashed corner ticks

Fine red dashed lines indicate selected fence and field lines where

generally visible on aerial photographs. This information is unchecked

Red tint indicates area in which only landmark buildings are shown



THIS MAP COMPLIES WITH NATIONAL MAP ACCURACY STANDARDS
FOR SALE BY U. S. GEOLOGICAL SURVEY, RESTON, VIRGINIA 22092
AND VIRGINIA DIVISION OF MINERAL RESOURCES, CHARLOTTESVILLE, VIRGINIA 22903
A FOLDER DESCRIBING TOPOGRAPHIC MAPS AND SYMBOLS IS AVAILABLE ON REQUEST

Revisions shown in purple compiled in cooperation with Commonwealth
of Virginia agencies from aerial photographs taken 1982 and other
source data. This information not field checked. Map edited 1986

ROAD CLASSIFICATION
Primary highway, all weather, hard surface
Secondary highway, all weather, hard surface
Light-duty road, all weather, improved surface
Unimproved road, fair or dry weather
U. S. Route
State Route

FRANKLIN, VA.

36076-F8-TF-024

1967
PHOTOREVISED 1986
DMA 5657 III NW-SERIES V834

RECEIVED
-- 2002

USGS NMD
HISTORICAL MAP ARCHIVES

