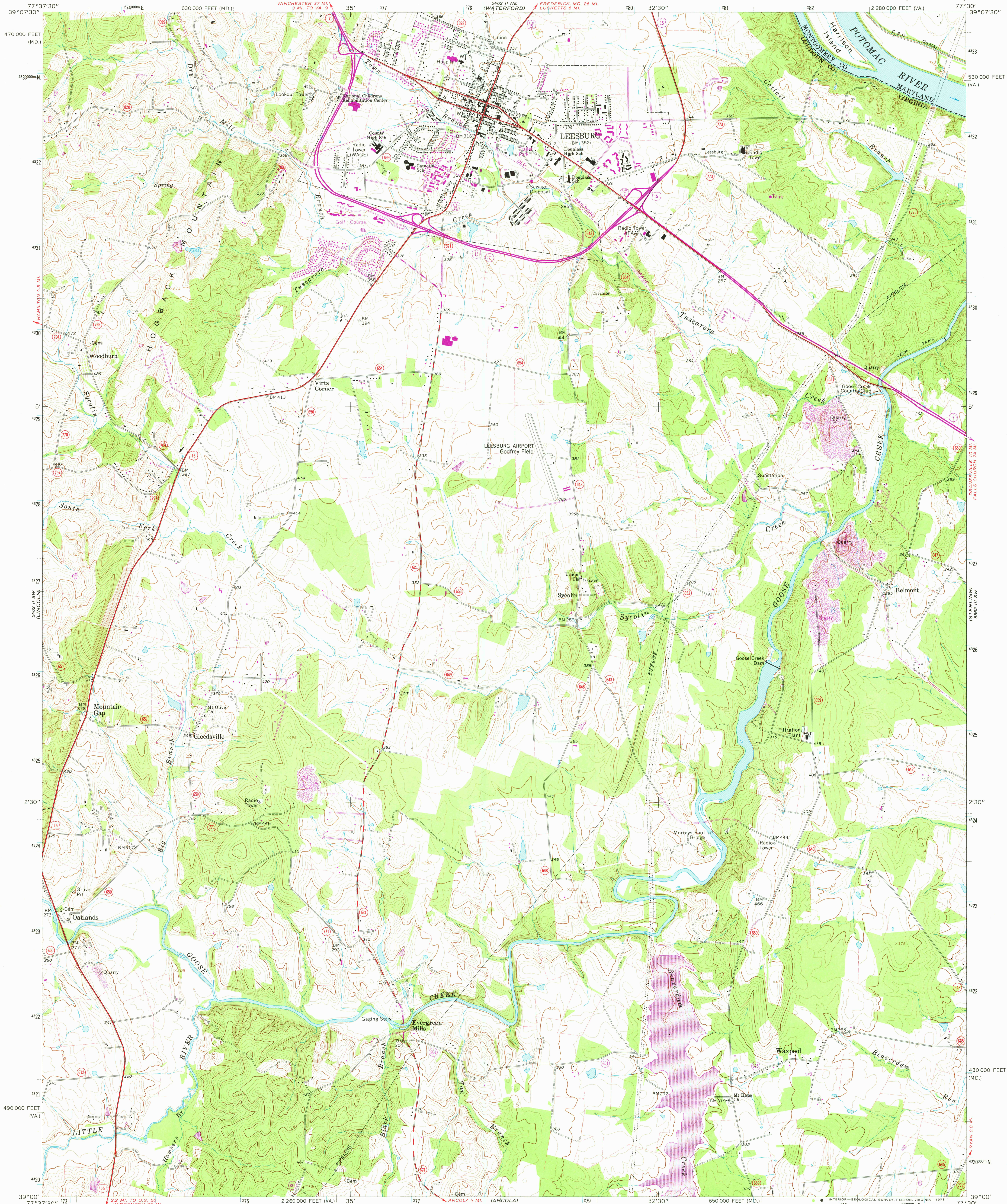
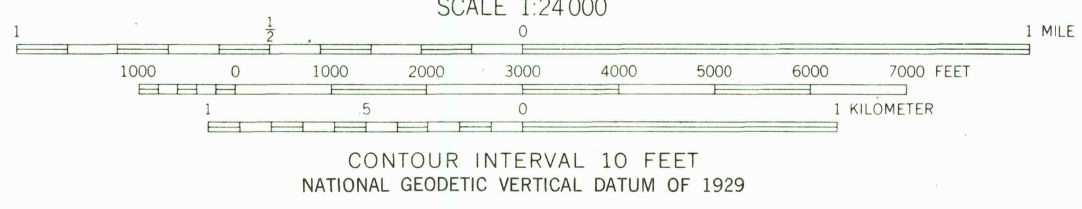
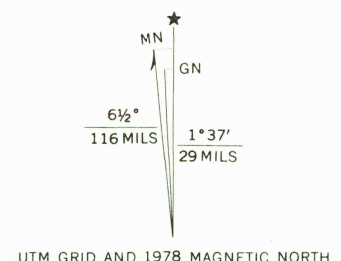


UNITED STATES
DEPARTMENT OF THE INTERIOR
GEOLOGICAL SURVEY

LEESBURG QUADRANGLE
VIRGINIA—MARYLAND
7.5 MINUTE SERIES (TOPOGRAPHIC)



Mapped, edited, and published by the Geological Survey
Control by USGS, USC&GS, and USCE
Topography by photogrammetric methods from aerial photographs
taken 1963 and 1964. Field checked 1968
Supersedes Army Map Service map dated 1952
Polyconic projection. 1927 North American datum
10,000-foot grids based on Virginia coordinate system,
north zone, and Maryland coordinate system
1,000-meter Universal Transverse Mercator grid ticks,
zone 18, shown in blue
Fine red dashed lines indicate selected fence and field lines where
generally visible on aerial photographs. This information is unchecked
Purple hatching indicates area to be submerged by
Beaverdam Creek Reservoir at elevation 290 feet



THIS MAP COMPLIES WITH NATIONAL MAP ACCURACY STANDARDS
FOR SALE BY U.S. GEOLOGICAL SURVEY, RESTON, VIRGINIA 22092
AND VIRGINIA DIVISION OF MINERAL RESOURCES, CHARLOTTESVILLE, VIRGINIA 22903
A FOLDER DESCRIBING TOPOGRAPHIC MAPS AND SYMBOLS IS AVAILABLE ON REQUEST



ROAD CLASSIFICATION	
Primary highway, all weather, hard surface	Light duty road, all weather, improved surface
Secondary highway, all weather, hard surface	Unimproved road, fair or dry weather
U.S. Route	State Route

USGS
Historical File
Photographic Division
LEESBURG, VA.—MD.
N3900—W7730/7.5
1968
PHOTOREVISED 1978
AMS 5462 II SE—SERIES V834

MAR 17 1978