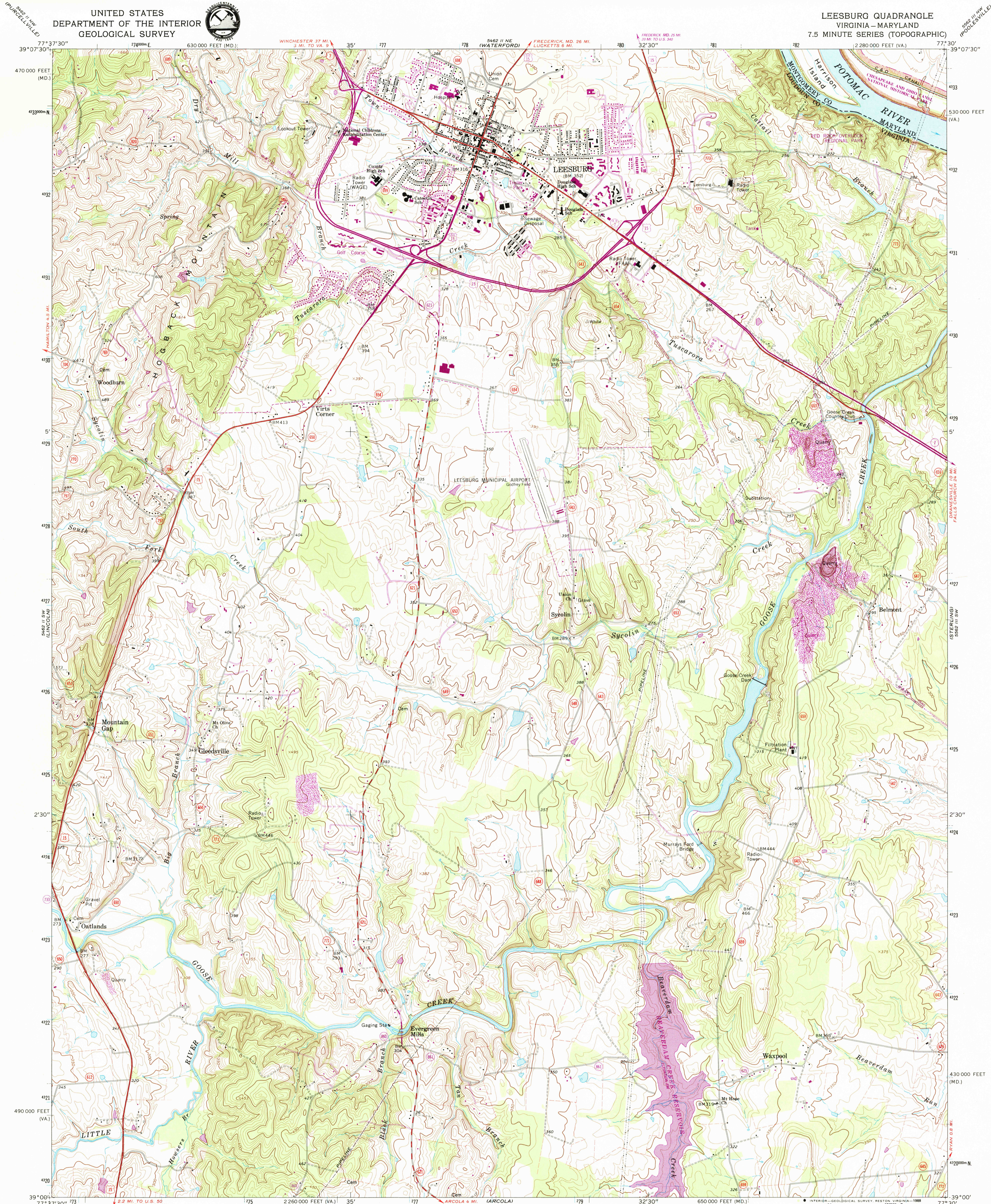


UNITED STATES
DEPARTMENT OF THE INTERIOR
GEOLOGICAL SURVEY

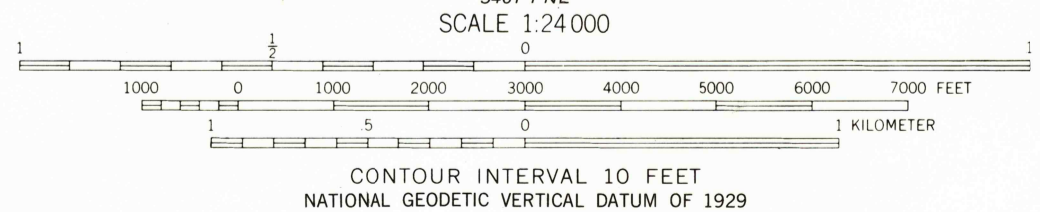
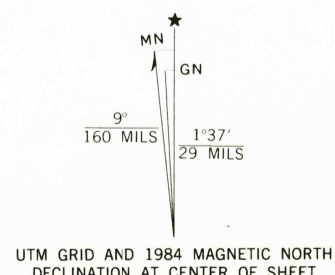


LEESBURG QUADRANGLE
VIRGINIA-MARYLAND
7.5 MINUTE SERIES (TOPOGRAPHIC)

5882 1/4 NW
(POOLESVILLE)



Mapped, edited, and published by the Geological Survey
Control by USGS, NOS/NOAA, and USCE
Topography by photogrammetric methods from aerial photographs
taken 1963 and 1964. Field checked 1968.
Polyconic projection. 10,000-foot grid ticks based on Virginia
coordinate system, north zone, and Maryland coordinate system
1000-meter Universal Transverse Mercator grid ticks,
zone 18, shown in blue.
1927 North American Datum
To place on the predicted North American Datum 1983
move the projection lines 8 meters south and
25 meters west as shown by dashed corner ticks.
Fine red dashed lines indicate selected fence and field lines where
generally visible on aerial photographs. This information is unchecked
There may be private inholdings within the boundaries of
the National or State reservations shown on this map.



THIS MAP COMPLIES WITH NATIONAL MAP ACCURACY STANDARDS
FOR SALE BY U.S. GEOLOGICAL SURVEY
DENVER, COLORADO 80225, OR RESTON, VIRGINIA 22092
AND VIRGINIA DIVISION OF MINERAL RESOURCES, CHARLOTTESVILLE, VIRGINIA 22903
A FOLDER DESCRIBING TOPOGRAPHIC MAPS AND SYMBOLS IS AVAILABLE ON REQUEST

QUADRANGLE LOCATION

Revisions shown in purple and woodland compiled in cooperation with
Commonwealth of Virginia agencies from aerial photographs
taken 1981 and other sources. This information not field checked
Map edited 1984

ROAD CLASSIFICATION
Primary highway, all weather, improved surface
Secondary highway, all weather, hard surface
Light-duty road, all weather, improved surface
Unimproved road, fair or dry weather
U.S. Route
State Route

LEESBURG, VA. - MD.
39077-A5-TF-024

1968
PHOTOREVISED 1984
DMA 5462 II SE - SERIES 7834

REPRODUCTION
FOR OFFICIAL USE ONLY
JUN 20 1988