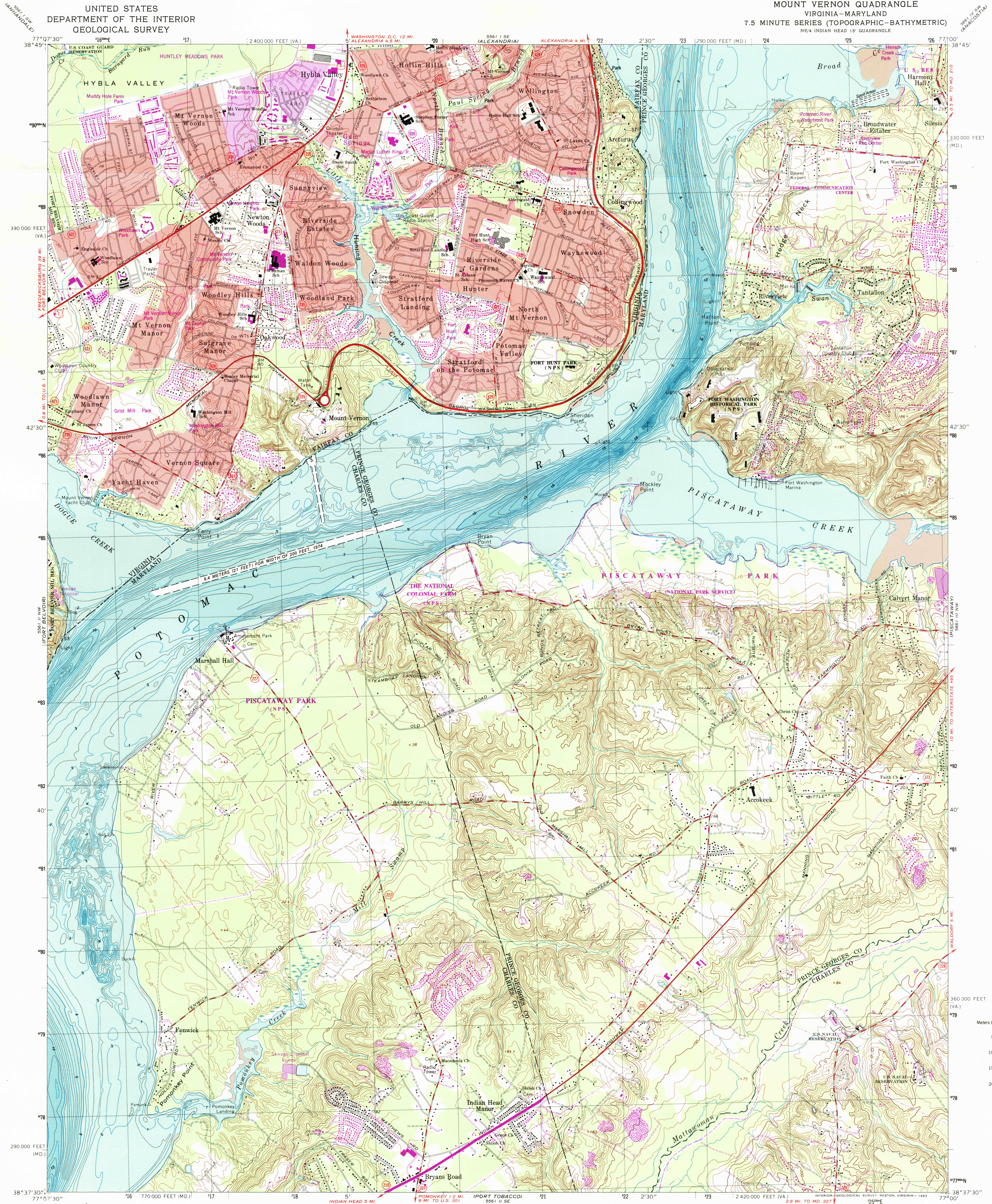


UNITED STATES
DEPARTMENT OF THE INTERIOR
GEOLOGICAL SURVEY

MOUNT VERNON QUADRANGLE
VIRGINIA-MARYLAND
7.5 MINUTE SERIES (TOPOGRAPHIC-BATHYMETRIC)
NE/4 INDIAN HEAD 15' QUADRANGLE

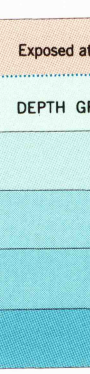


CONVERSION
SCALES

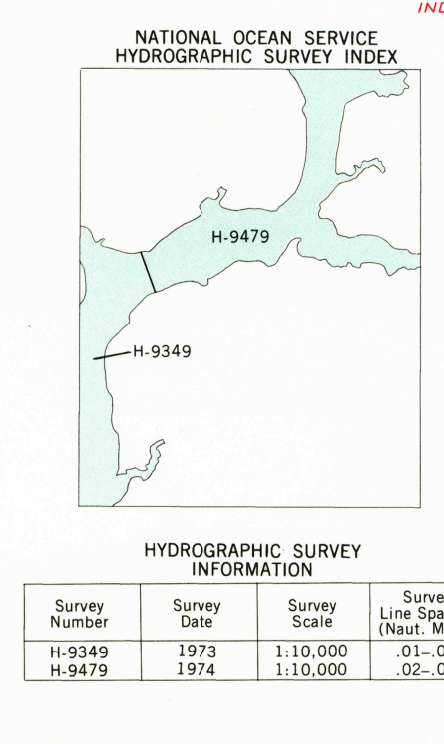


Feet	Meters
1	3048
2	6096
3	9144
4	12192
5	15240
6	18288
7	21336
8	24384
9	27432
10	30480

To convert feet to meters
multiply by 3048
To convert meters to feet
multiply by 3.2808



Map by the Defense Mapping Agency
Edited and published by the Geological Survey
and the National Ocean Service in cooperation
with Commonwealth of Virginia agencies
Control by USGS, NOS/NOAA, and USCE
Topography by photogrammetric methods from aerial photographs taken
1950. Field checked 1951. Revised by the Geological Survey from aerial
photographs taken 1965-64. Field checked 1966
Bathymetry compiled by the National Ocean Service from tide-coordinated
hydrographic surveys. This information is not intended for navigational
purposes
Mean low water (dotted) line and mean high water (heavy solid) line
compiled by NOS from tide-coordinated aerial photographs
Apparent shoreline (outer edge of vegetation) shown by light solid line
Polyconic projection. 10,000-foot grid ticks based on Maryland coordinate
system, and Virginia coordinate system, north zone
1000-meter Universal Transverse Mercator grid, zone 18
1927 North American Datum
To place on the predicted North American Datum 1983 move the
projection lines 9 meters south and 26 meters west as shown by dashed
corner ticks
Fine red dashed lines indicate selected fence and field lines where
generally visible on aerial photographs. This information is unchecked
Red tint indicates areas in which only landmark buildings are shown
There may be private inholdings within the boundaries of the National
or State reservations shown on this map
Revisions shown in purple and woodland compiled by the Geological
Survey in cooperation with Commonwealth of Virginia agencies from
aerial photographs taken 1980 and other sources. This information not
field checked. Map edited 1983
Purple tint indicates extension of urban areas



SCALE 1:24,000
CONTOUR INTERVAL 10 FEET
NATIONAL GEODETIC VERTICAL DATUM OF 1929
BATHYMETRIC CONTOUR INTERVAL 1 METER
WITH SUPPLEMENTARY 0.5 METER CONTOURS
DATUM IS MEAN LOW WATER
THE RELATIONSHIP BETWEEN THE TWO DATUMS IS VARIABLE
THE MEAN RANGE OF TIDE IS APPROXIMATELY 0.7 METER
BASE MAP COMPLIES WITH NATIONAL MAP ACCURACY STANDARDS
BATHYMETRIC SURVEY DATA COMPLIES WITH INTERNATIONAL HYDROGRAPHIC
ORGANIZATION (IHO) SPECIAL PUBLICATION 44 ACCURACY STANDARDS
AND/OR STANDARDS USED AT THE DATE OF THE SURVEY
FOR SALE BY U.S. GEOLOGICAL SURVEY, RESTON, VIRGINIA 22092,
NATIONAL OCEAN SERVICE, ROCKVILLE, MARYLAND 20852,
AND VIRGINIA DIVISION OF MINERAL RESOURCES, CHARLOTTESVILLE, VIRGINIA 22903
A FOLDER DESCRIBING TOPOGRAPHIC MAPS AND SYMBOLS IS AVAILABLE ON REQUEST

ROAD CLASSIFICATION
Heavy-duty ——— Light-duty ———
Medium-duty ——— Unimproved dirt ———
U.S. Route ——— State Route ———
MOUNT VERNON, VA.-MD.
NE/4 INDIAN HEAD 15' QUADRANGLE
38077-F1-TB-024
1966
PHOTOREVISED 1983
BATHYMETRY ADDED 1982
DMA 5561 II NE-SERIES V835

