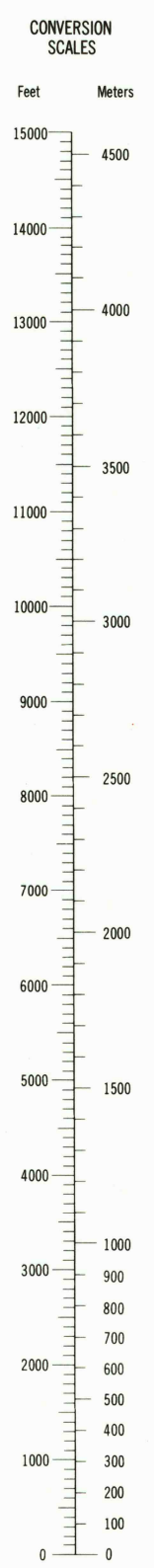
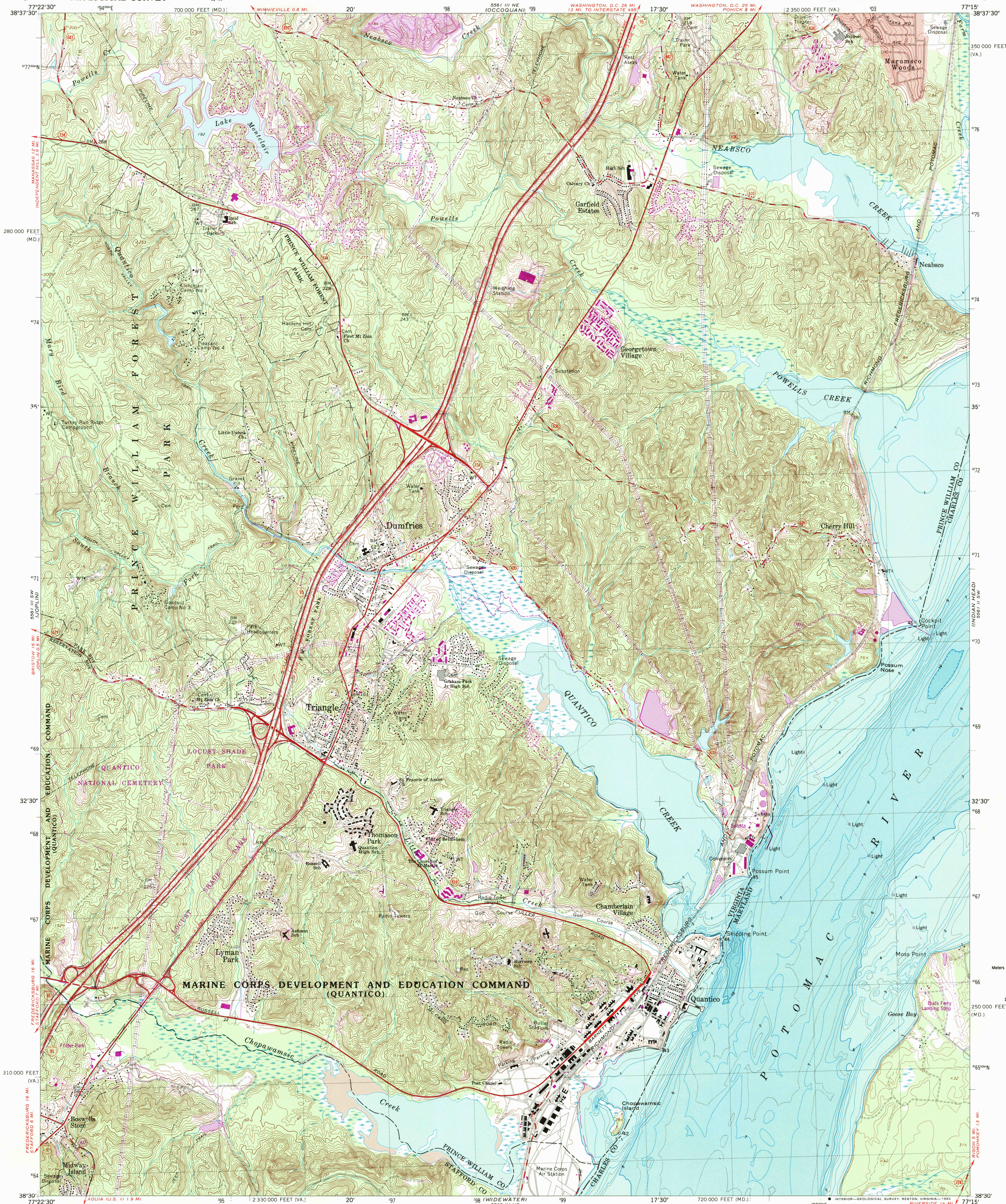


UNITED STATES
DEPARTMENT OF THE INTERIOR
GEOLOGICAL SURVEY



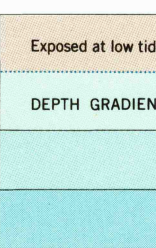
QUANTICO QUADRANGLE
VIRGINIA - MARYLAND
7.5 MINUTE SERIES (TOPOGRAPHIC - BATHYMETRIC)
SE/4 QUANTICO 15' QUADRANGLE



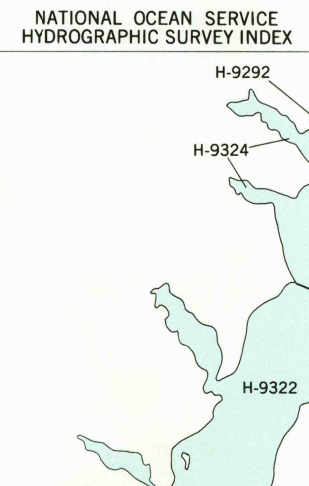
Feet	Meters
1	3048
2	6096
3	9144
4	12192
5	15240
6	18288
7	21336
8	24384
9	27432
10	30480

To convert feet to meters
multiply by 3.048

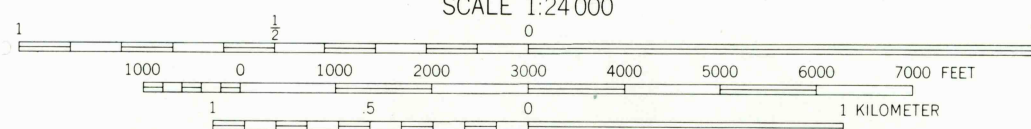
To convert meters to feet
multiply by 3.2808



Maped by the Defense Mapping Agency
Edited and published by the Geological Survey
and the National Ocean Service in cooperation with
Commonwealth of Virginia agencies
Control by USGS, NCS/NOAA, and USCE
Topography by photogrammetric methods from aerial photographs taken
1950. Field checked 1956
Revised by the Geological Survey 1966
Bathymetry compiled by the National Ocean Service from tide-coordinated
hydrographic surveys. This information is not intended for navigational
purposes
Mean low water (dotted line) and mean high water (heavy solid line)
compiled by NCS from tide-coordinated aerial photographs. Apparent
shoreline (outer edge of vegetation) shown by light solid line
Polyconic projection. 10,000-foot grid ticks based on Virginia
coordinate system, north zone, and Maryland coordinate system
1000-meter Universal Transverse Mercator grid, zone 18
1927 North American Datum
To place on the predicted North American Datum 1983 move the
projection lines 9 meters south and 26 meters west as shown by
dashed corner ticks
Red tint indicates area in which only landmark buildings are shown
There may be private inholdings within the boundaries of the National
or State reservations shown on this map
Revisions shown in purple and woodland compiled by the Geological
Survey in cooperation with Commonwealth of Virginia agencies from
aerial photographs taken 1980 and other sources. This information not
field checked. Map edited 1983
Purple tint indicates extension of urban areas

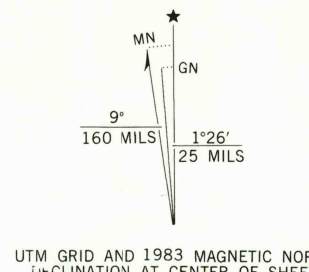
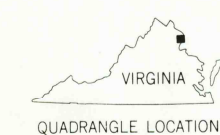


Survey Number	Survey Date	Survey Scale	Survey Line Sounding (Near, Miles)
H-9322	1972-73	1:10,000	01-06
H-9324	1972-74	1:10,000	01-05
H-9326	1973	1:10,000	02-05



CONTOUR INTERVAL 10 FEET
NATIONAL GEODETIC VERTICAL DATUM OF 1929
BATHYMETRIC CONTOUR INTERVAL 1 METER
WITH SUPPLEMENTARY 0.5 METER CONTOURS
DATUM IS MEAN LOW WATER
THE RELATIONSHIP BETWEEN THE TWO DATUMS IS VARIABLE
THE MEAN RANGE OF TIDE IS APPROXIMATELY 0.4 METER

BASE MAP COMPLIES WITH NATIONAL MAP ACCURACY STANDARDS
BATHYMETRIC SURVEY DATA COMPLIES WITH INTERNATIONAL HYDROGRAPHIC
ORGANIZATION (IHO) SPECIAL PUBLICATION 44 ACCURACY STANDARDS
AND/OR STANDARDS USED AT THE DATE OF THE SURVEY
FOR SALE BY U.S. GEOLOGICAL SURVEY, RESTON, VIRGINIA 22092,
NATIONAL OCEAN SERVICE, ROCKVILLE, MARYLAND 20852,
AND VIRGINIA DIVISION OF MINERAL RESOURCES, CHARLOTTESVILLE, VIRGINIA 22903
A FOLDER DESCRIBING TOPOGRAPHIC MAPS AND SYMBOLS IS AVAILABLE ON REQUEST



ROAD CLASSIFICATION
Heavy-duty ——— Light-duty ———
Medium-duty ——— Unimproved dirt ———
Interstate Route U.S. Route State Route

QUANTICO, VA. - MD.
SE/4 QUANTICO 15' QUADRANGLE
38077 E3-TB-024

1966
PHOTOREVISED 1983
BATHYMETRY ADDED 1982
DMA 5561 III SE-SERIES V834

RETURN TO:
USGS AND HISTORICAL MAP ARCHIVES