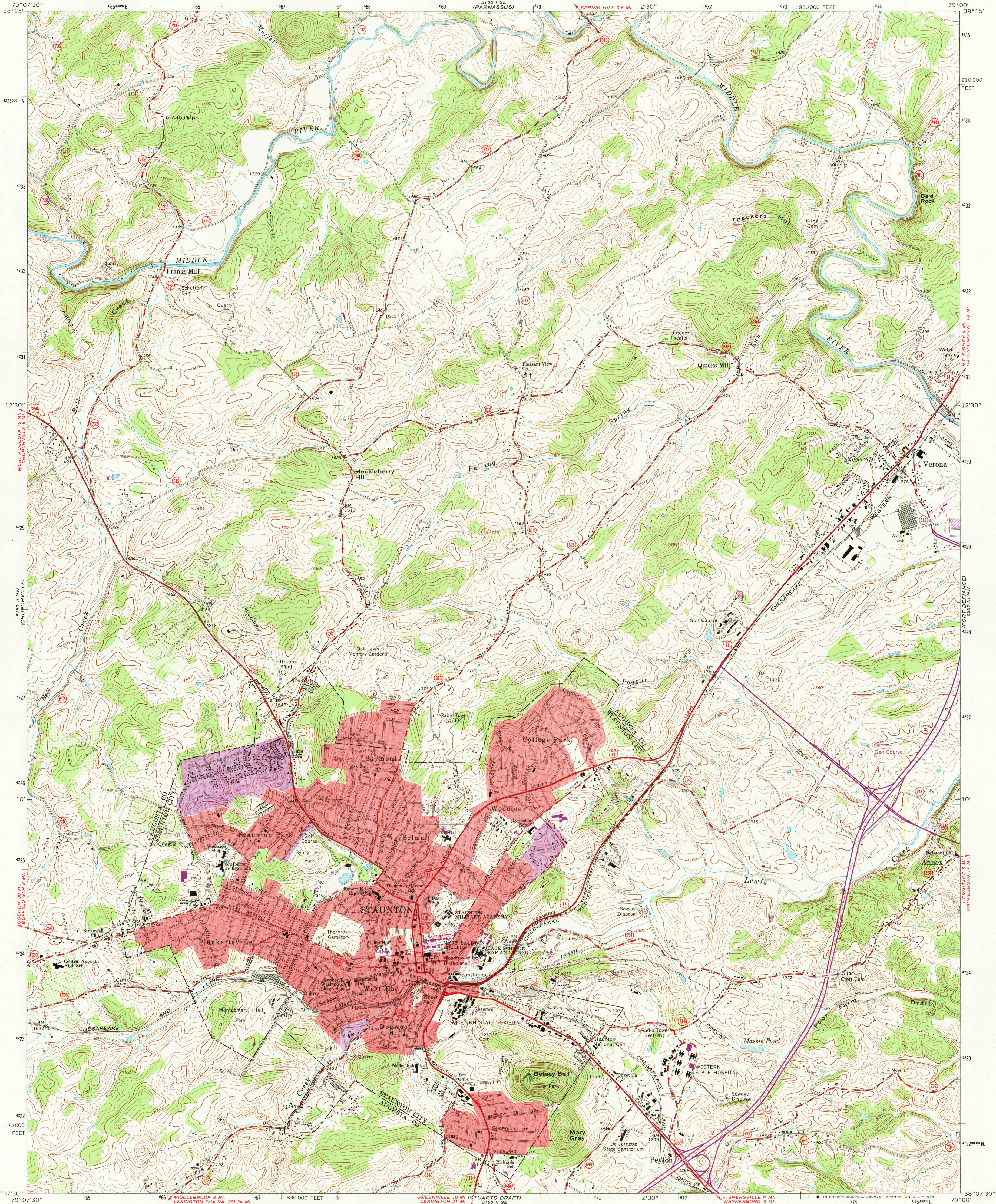


UNITED STATES
DEPARTMENT OF THE INTERIOR
GEOLOGICAL SURVEY

COMMONWEALTH OF VIRGINIA
DIVISION OF MINERAL RESOURCES
JAMES L. CALVER, STATE GEOLOGIST

STAUNTON QUADRANGLE
VIRGINIA
7.5 MINUTE SERIES (TOPOGRAPHIC)
NE/4 STAUNTON 15' QUADRANGLE



Mapped, edited, and published by the Geological Survey
Control by USGS and USC&GS

Topography by photogrammetric methods from aerial photographs
taken 1963. Field checked 1964

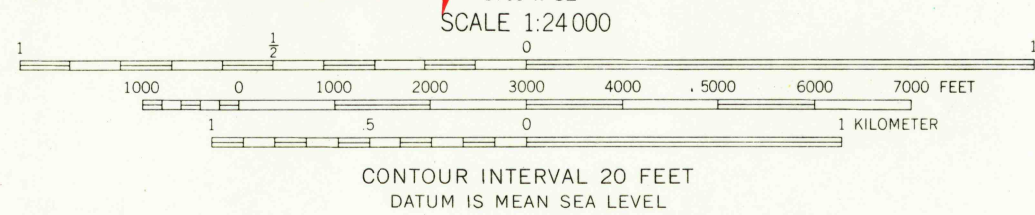
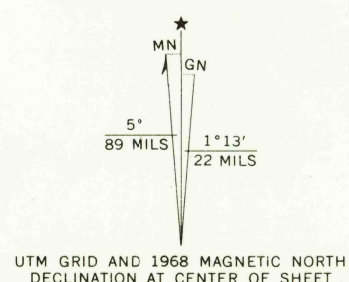
Polyconic projection. 1927 North American datum
10,000-foot grid based on Virginia coordinate system, north zone
1000-meter Universal Transverse Mercator grid ticks, zone 17,
shown in blue

Fine red dashed lines indicate selected fence and field lines where
generally visible on aerial photographs. This information is unchecked

Red tint indicates areas in which only landmark buildings are shown

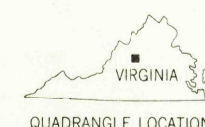
Revisions shown in purple compiled from aerial photographs
taken 1968. This information not field checked

Purple tint indicates extension of urban areas



THIS MAP COMPLIES WITH NATIONAL MAP ACCURACY STANDARDS
FOR SALE BY U.S. GEOLOGICAL SURVEY, WASHINGTON, D.C. 20242
AND VIRGINIA DIVISION OF MINERAL RESOURCES, CHARLOTTESVILLE, VIRGINIA 22903
A FOLDER DESCRIBING TOPOGRAPHIC MAPS AND SYMBOLS IS AVAILABLE ON REQUEST

USGS
Historical File
Topographic Division



U.S.G.S.
FILE COPY
TOPOGRAPHIC DIVISION

ROAD CLASSIFICATION

Heavy-duty ——— Light-duty ———
Medium-duty ——— Unimproved dirt ———
Interstate Route U.S. Route State Route

STAUNTON, VA.
NE/4 STAUNTON 15' QUADRANGLE
N3807.5-W7900/7.5
1964

PHOTOREVISED 1968
AMS 5160 II NE-SERIES V834

MAR 4 1969

3060

W