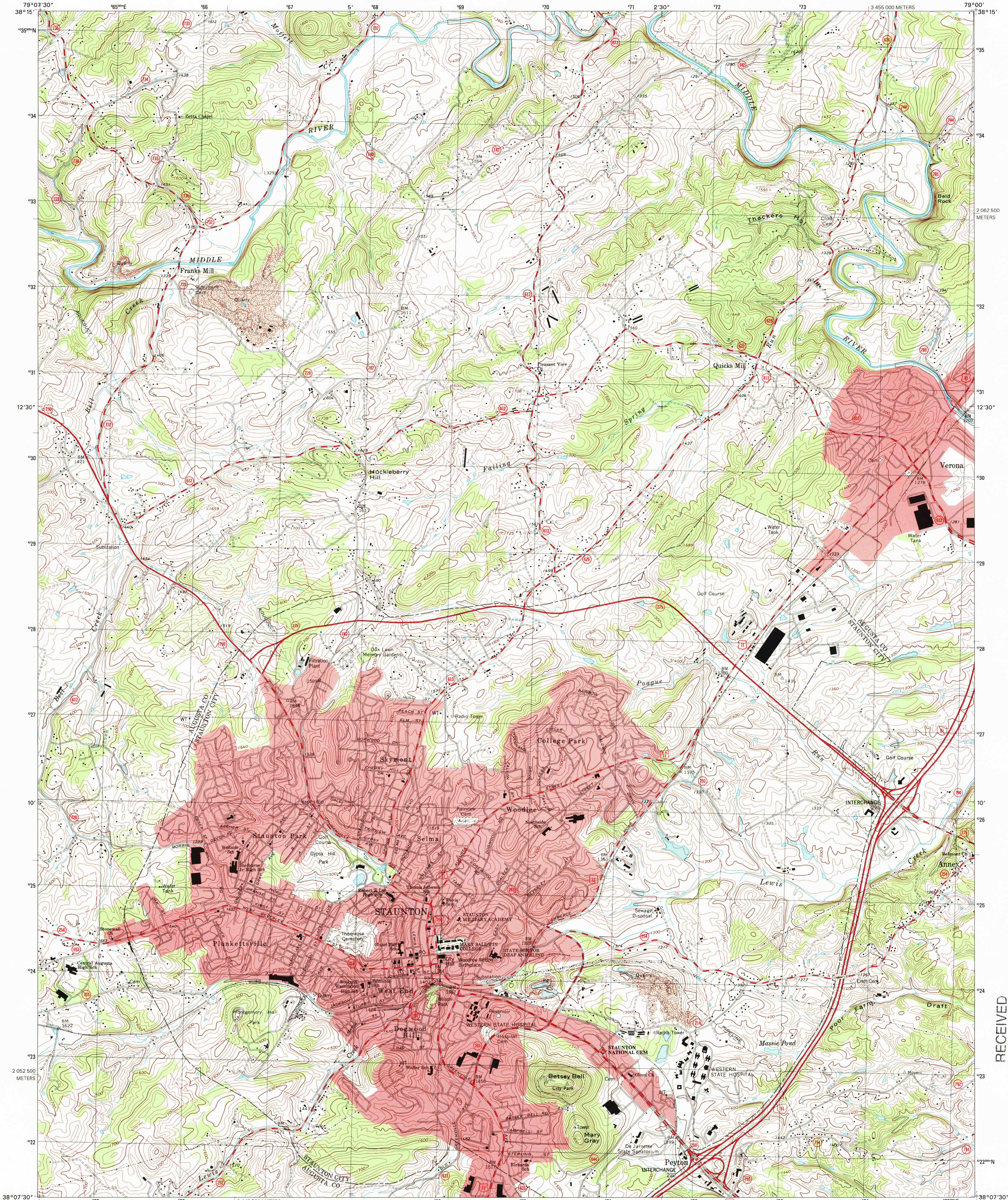


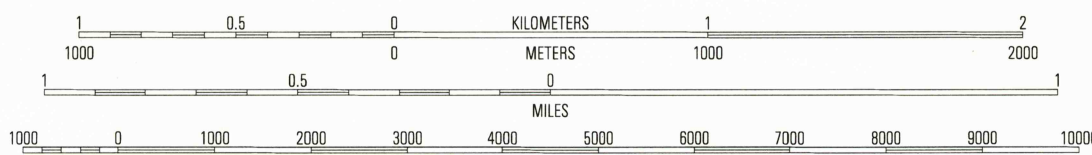
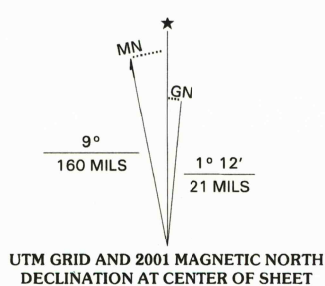


U.S. DEPARTMENT OF THE INTERIOR  
U.S. GEOLOGICAL SURVEY

STAUNTON QUADRANGLE  
VIRGINIA  
7.5-MINUTE SERIES (TOPOGRAPHIC)



Produced by the United States Geological Survey  
Topography compiled 1963. Planimetry derived from imagery taken 1996 and other sources. Survey control current as of 1964 North American Datum of 1983 (NAD 83). Projection and 1 000-meter grid: Universal Transverse Mercator, zone 17 2 500-meter ticks: Virginia Coordinate System of 1983 (north zone) North American Datum of 1927 (NAD 27) is shown by dashed corner ticks. The values of the shift between NAD 83 and NAD 27 for 7.5-minute intersections are obtainable from National Geodetic Survey NADCON software  
There may be private inholdings within the boundaries of the National or State reservations shown on this map  
Landmark buildings verified 1964



CONTOUR INTERVAL 20 FEET  
NATIONAL GEODETIC VERTICAL DATUM OF 1929  
TO CONVERT FROM FEET TO METERS, MULTIPLY BY 0.3048

THIS MAP COMPLIES WITH NATIONAL MAP ACCURACY STANDARDS  
FOR SALE BY U.S. GEOLOGICAL SURVEY, P.O. BOX 25286, DENVER, COLORADO 80225  
AND VIRGINIA DIVISION OF MINERAL RESOURCES, CHARLOTTESVILLE, VIRGINIA 22903  
A FOLDER DESCRIBING TOPOGRAPHIC MAPS AND SYMBOLS IS AVAILABLE ON REQUEST

1	2	3
4	5	6
7	8	9

ADJOINING 7.5 QUADRANGLE NAMES

ROAD CLASSIFICATION  
Primary highway hard surface .....  
Secondary highway hard surface .....  
Light-duty road, hard or improved surface .....  
Unimproved road .....  
Interstate Route U.S. Route State Route

STAUNTON, VA  
1998

NIMA 5160 II NE-SERIES V834

RECEIVED  
AUG 3 1 2001  
USGS INFO  
HISTORICAL MAP ARCHIVES

