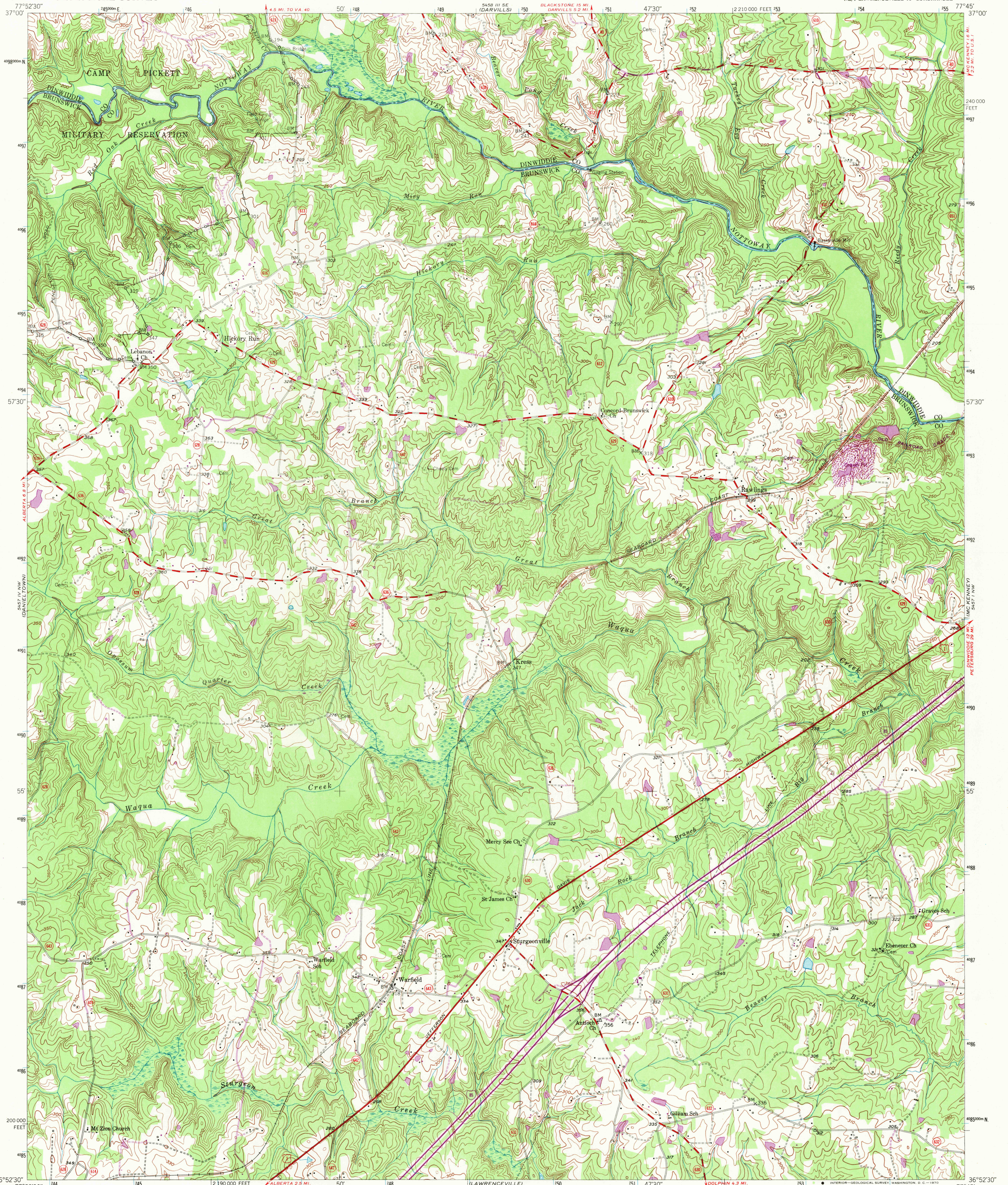
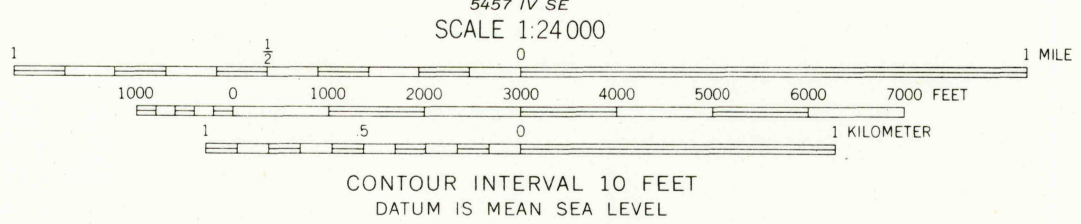
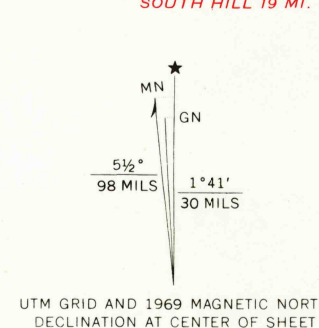


UNITED STATES
DEPARTMENT OF THE INTERIOR
GEOLOGICAL SURVEY

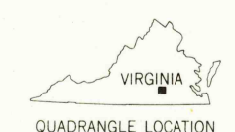
WARFIELD QUADRANGLE
VIRGINIA
7.5 MINUTE SERIES (TOPOGRAPHIC)
NE/4 LAWRENCEVILLE 15' QUADRANGLE



Mapped, edited, and published by the Geological Survey
Control by USGS, USC&GS, and USCE
Culture and drainage in part compiled from
aerial photographs taken 1949
Topography by plane-table methods 1950-1951
Polyconic projection. 1927 North American datum
10,000-foot grid based on Virginia coordinate system,
south zone
1000-meter Universal Transverse Mercator grid ticks,
zone 18, shown in blue
Revisions shown in purple compiled in cooperation with
State of Virginia from aerial photographs taken 1969
This information not field checked!



USGS
Historical File
Topographic Division



ROAD CLASSIFICATION
Heavy-duty 4 LANE 16 LANE Light-duty
Medium-duty 4 LANE 16 LANE Unimproved dirt
U.S. Route Interstate Route
State Route

WARFIELD, VA.
NE/4 LAWRENCEVILLE 15' QUADRANGLE
N3652.5-W7745/7.5

U.S.G.S.
FILE COPY
TOPOGRAPHIC DIVISION

1951
PHOTOREVISED 1969
AMS 5457 IV NE-SERIES V834

THIS MAP COMPLIES WITH NATIONAL MAP ACCURACY STANDARDS
FOR SALE BY U.S. GEOLOGICAL SURVEY, WASHINGTON, D.C. 20242
AND VIRGINIA DIVISION OF MINERAL RESOURCES, CHARLOTTEVILLE, VIRGINIA 22903
A FOLDER DESCRIBING TOPOGRAPHIC MAPS AND SYMBOLS IS AVAILABLE ON REQUEST

3650
MAR 11 1970