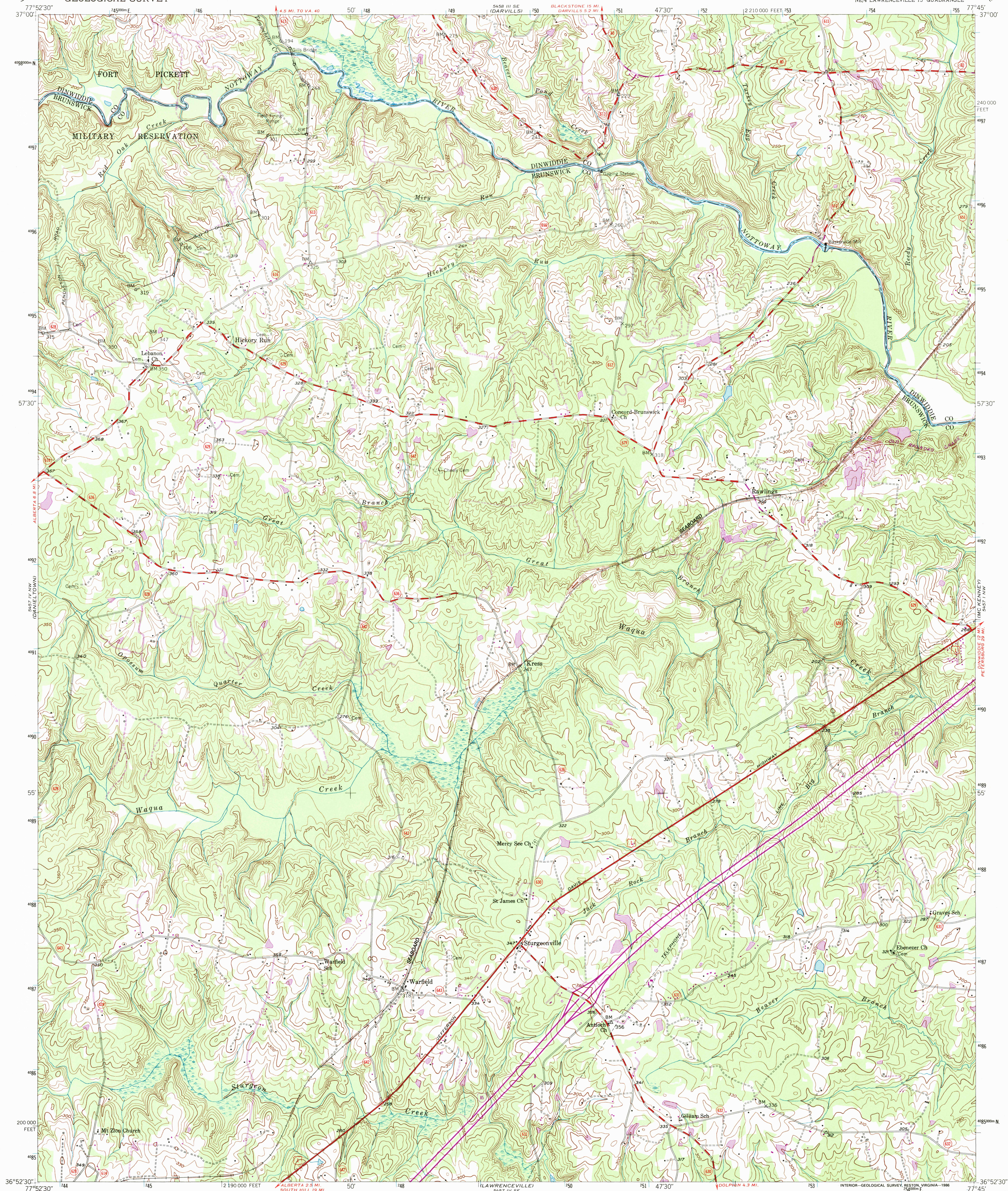


UNITED STATES
DEPARTMENT OF THE INTERIOR
GEOLOGICAL SURVEY

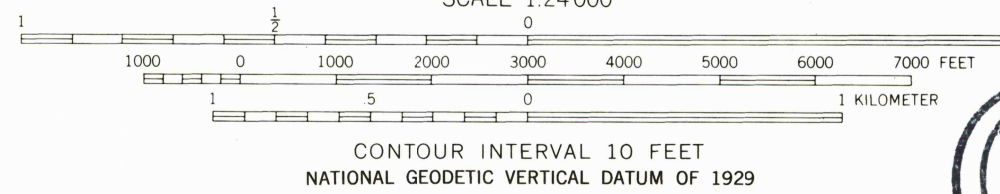
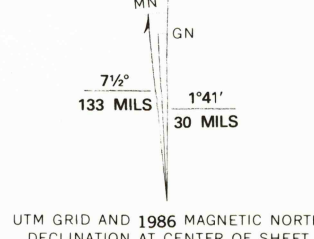
WARFIELD QUADRANGLE
VIRGINIA
7.5 MINUTE SERIES (TOPOGRAPHIC)
NE/4 LAWRENCEVILLE 15' QUADRANGLE



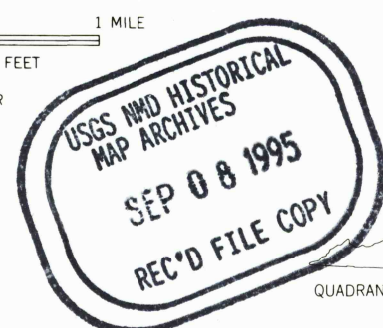
Mapped, edited, and published by the Geological Survey
Control by USGS, USC&GS, and USCE

Culture and drainage in part compiled from
aerial photographs taken 1949
Topography by plane-table methods 1950-1951
Polyconic projection. 1927 North American datum
10,000-foot grid based on Virginia coordinate system,
south zone
1000-meter Universal Transverse Mercator grid ticks,
zone 18, shown in blue

To place on the predicted North American Datum 1983,
move the projection lines 12 meters south and
26 meters west as shown by dashed corner ticks
There may be private inholdings within the boundaries of
the National or State reservations shown on this map



THIS MAP COMPLIES WITH NATIONAL MAP ACCURACY STANDARDS
FOR SALE BY U.S. GEOLOGICAL SURVEY, RESTON, VIRGINIA 22092
AND VIRGINIA DIVISION OF MINERAL RESOURCES, CHARLOTTESVILLE, VIRGINIA 22903
A FOLDER DESCRIBING TOPOGRAPHIC MAPS AND SYMBOLS IS AVAILABLE ON REQUEST



Revisions shown in purple compiled in cooperation with Commonwealth
of Virginia agencies from aerial photographs taken 1982 and other
source data. This information not field checked. Map edited 1986

ROAD CLASSIFICATION
Heavy-duty 4 LANE 16 LANE Light-duty
Medium-duty 4 LANE 6 LANE Unimproved dirt
U. S. Route State Route
Interstate Route

WARFIELD, VA.
NE/4 LAWRENCEVILLE 15' QUADRANGLE
36077-H7-TF-024

1951
PHOTOREVISED 1986
DMA 5457 IV NE-SERIES Y834

