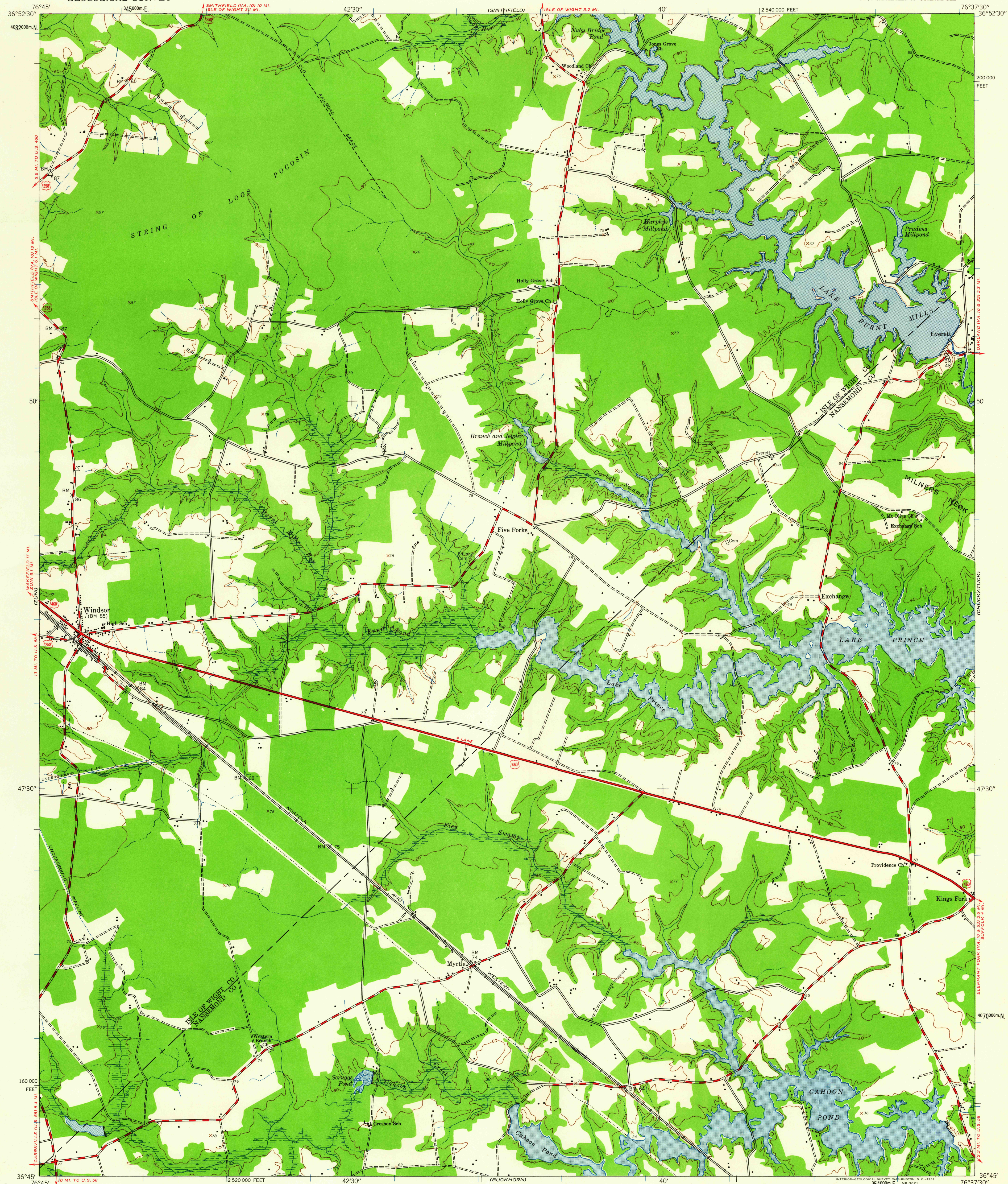


UNITED STATES  
DEPARTMENT OF THE INTERIOR  
GEOLOGICAL SURVEY

WINDSOR QUADRANGLE  
VIRGINIA  
7.5 MINUTE SERIES (TOPOGRAPHIC)  
SW 1/4 SMITHFIELD 15' QUADRANGLE



Mapped by the Army Map Service  
Published for civil use by the Geological Survey  
Control by USGS and USC&GS  
Topography from aerial photographs by photogrammetric  
methods and by planetable surveys 1944  
Aerial photographs taken 1937 and 1942  
Polyconic projection. 1927 North American datum  
10,000-foot grid based on Virginia coordinate system,  
south zone  
1000-meter Universal Transverse Mercator grid ticks,  
zone 18, shown in blue

TRUE NORTH  
MAGNETIC NORTH  
APPROXIMATE MEAN  
DECLINATION, 1944

SCALE 1:24,000  
1000 0 1000 2000 3000 4000 5000 6000 7000 FEET  
1 0 5 10 KILOMETER  
CONTOUR INTERVAL 20 FEET  
DATUM IS MEAN SEA LEVEL

THIS MAP COMPLIES WITH NATIONAL MAP ACCURACY STANDARDS  
FOR SALE BY U. S. GEOLOGICAL SURVEY, WASHINGTON 25, D. C.  
A FOLDER DESCRIBING TOPOGRAPHIC MAPS AND SYMBOLS IS AVAILABLE ON REQUEST

ROAD CLASSIFICATION  
Heavy-duty ——— Light-duty ———  
Medium-duty ——— Unimproved dirt ———  
U. S. Route

QUADRANGLE LOCATION  
VIRGINIA  
U.S.G.S.  
Historical File  
Topographic Division

FILE COPY  
TOPOGRAPHIC DIVISION

WINDSOR, VA.  
SW 1/4 SMITHFIELD 15' QUADRANGLE  
N 3645—W 7637.5/7.5  
1944

DEC 8 1961

2575