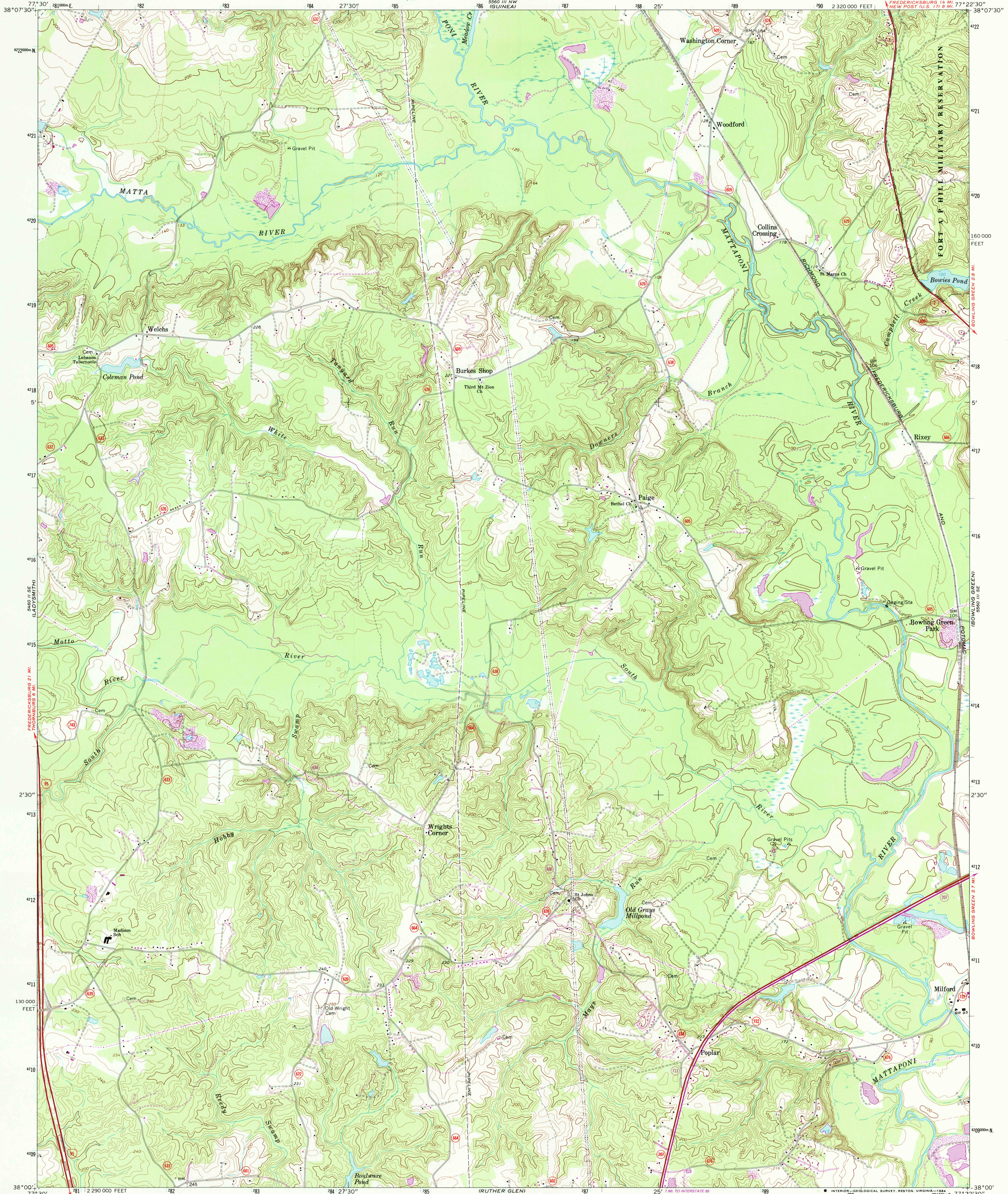
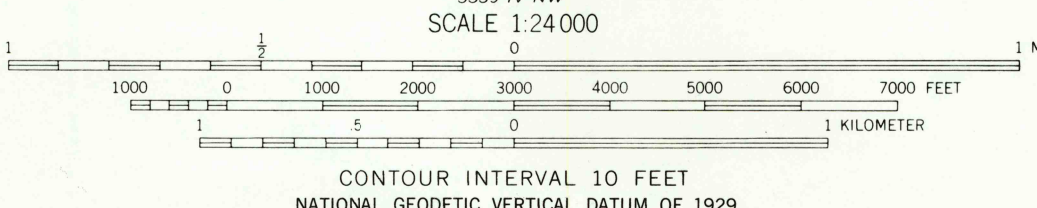
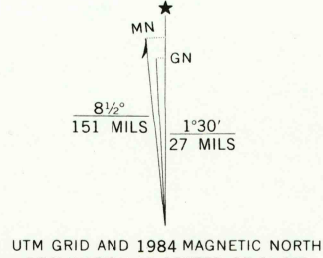


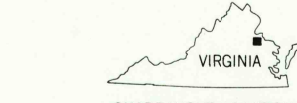
5560 III SW - SERIES V834  
(RAPID TRAINING  
ACADEMY)



Mapped, edited, and published by the Geological Survey  
Control by USGS and NOS/NOAA  
Topography by photogrammetric methods from aerial photographs  
taken 1966. Field checked 1969  
Supersedes Army Map Service map dated 1942  
Polyconic projection. 10,000-foot grid ticks based on Virginia  
coordinate system, north zone  
1000-meter Universal Transverse Mercator grid ticks,  
zone 18, shown in blue  
1927 North American Datum  
To place on the predicted North American Datum 1983  
move the projection lines 10 meters south and  
25 meters west as shown by dashed corner ticks  
Fine red dashed lines indicate selected fence and field lines where  
generally visible on aerial photographs. This information is unchecked  
There may be private inholdings within the boundaries of  
the National or State reservations shown on this map



THIS MAP COMPLIES WITH NATIONAL MAP ACCURACY STANDARDS  
FOR SALE BY U. S. GEOLOGICAL SURVEY, RESTON, VIRGINIA 22092  
AND VIRGINIA DIVISION OF MINERAL RESOURCES, CHARLOTTESVILLE, VIRGINIA 22903  
A FOLDER DESCRIBING TOPOGRAPHIC MAPS AND SYMBOLS IS AVAILABLE ON REQUEST



ROAD CLASSIFICATION  
Primary highway, all weather, Light duty road, all weather,  
hard surface, improved surface  
Unimproved road, fair or dry  
weather  
Interstate Route State Route

WOODFORD, VA.  
38077-A4-TF-024

1969  
PHOTOREVISED 1984  
DMA 5560 III SW - SERIES V834

RETURN TO:  
USGS NHD HISTORICAL MAP ARCHIVES