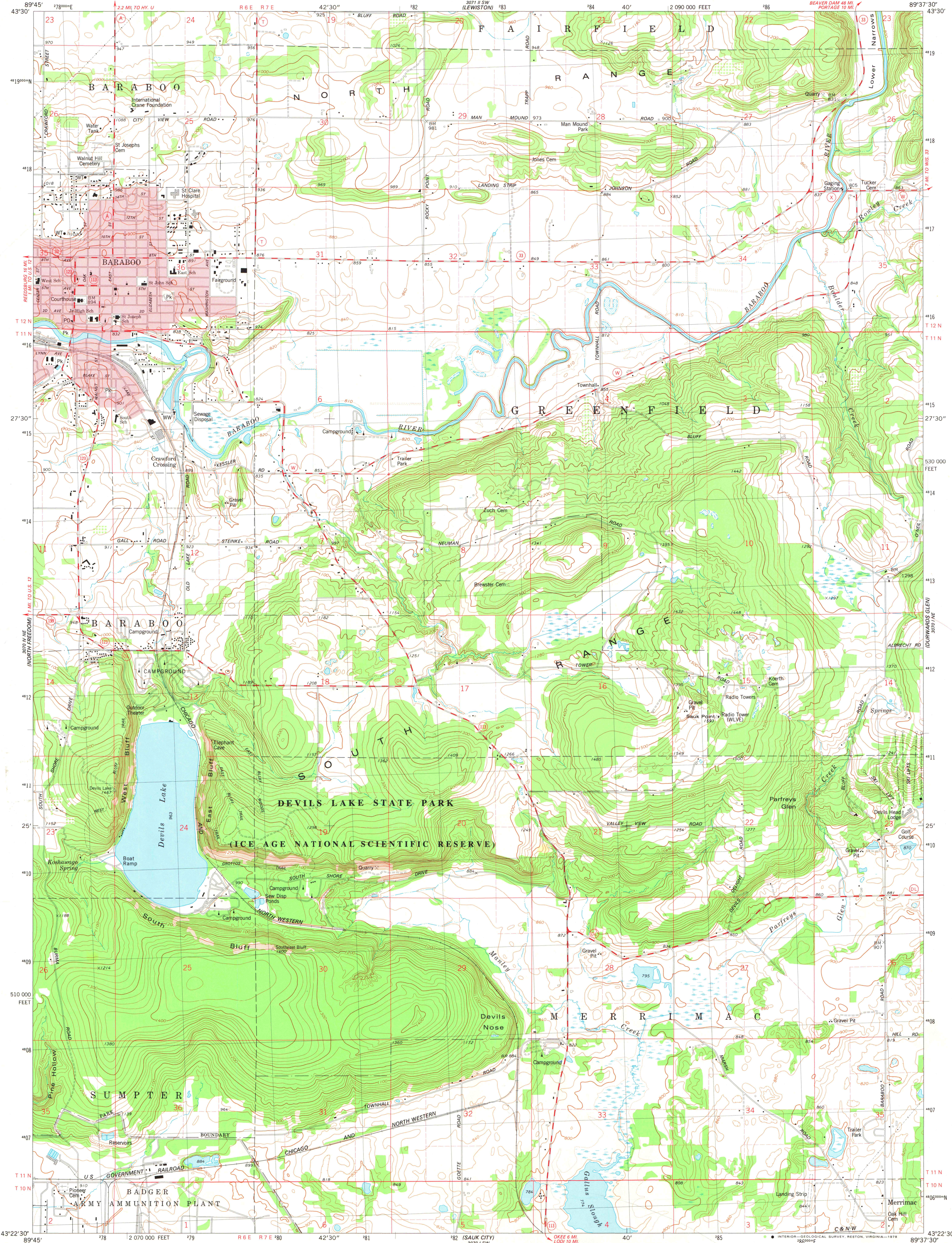
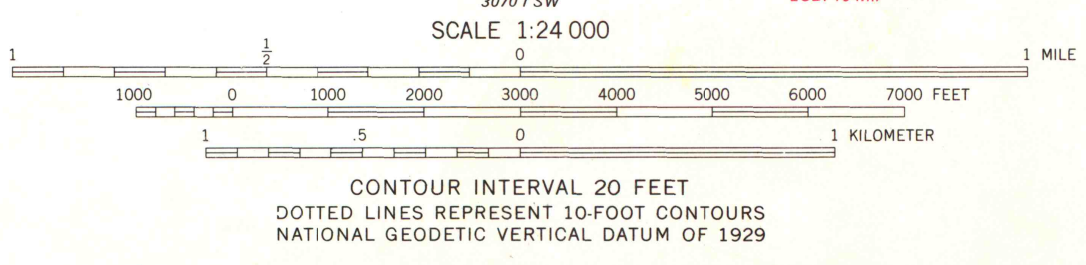


MAP AND AIR PHOTO
LIBRARY
SEP 13 1978
University of Wisconsin
Madison

1975
COPY
1-1



Mapped, edited, and published by the Geological Survey
in cooperation with the Wisconsin Division of Highways
and Wisconsin Geological and Natural History Survey
Control by USGS and NOS/NOAA
Topography by photogrammetric methods from aerial
photographs taken 1974. Field checked 1975
Projection and 10,000-foot grid ticks: Wisconsin coordinate
system, south zone (Lambert conformal conic)
1000-meter Universal Transverse Mercator grid, zone 16
1927 North American datum
Red tint indicates areas in which only landmark buildings are shown
Fine red dashed lines indicate selected fence and field lines where
generally visible on aerial photographs. This information is unchecked



ROAD CLASSIFICATION
Primary highway, hard surface ———— Light-duty road, hard or improved surface
Secondary highway, hard surface ———— Unimproved road
Interstate Route ———— U. S. Route ———— State Route

THIS MAP COMPLIES WITH NATIONAL MAP ACCURACY STANDARDS
FOR SALE BY U. S. GEOLOGICAL SURVEY, RESTON, VIRGINIA 22092
AND WISCONSIN GEOLOGICAL AND NATURAL HISTORY SURVEY, MADISON, WISCONSIN 53706
A FOLDER DESCRIBING TOPOGRAPHIC MAPS AND SYMBOLS IS AVAILABLE ON REQUEST



BARABOO, WIS.
NW 1/4 BARABOO 15' QUADRANGLE
N4322.5 — W8937.5/7.5
1975
AMS 3070 1 NW—SERIES V861