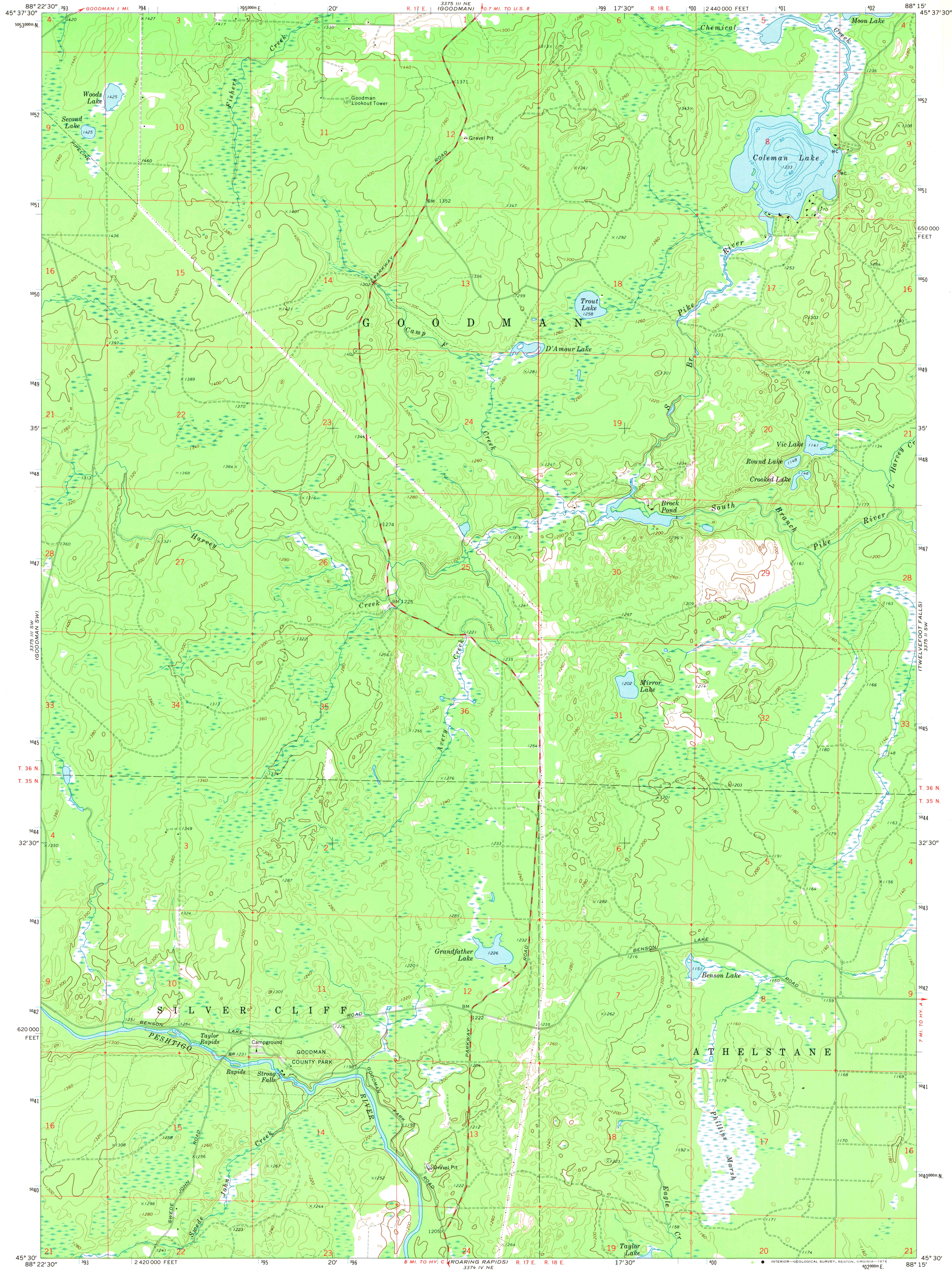
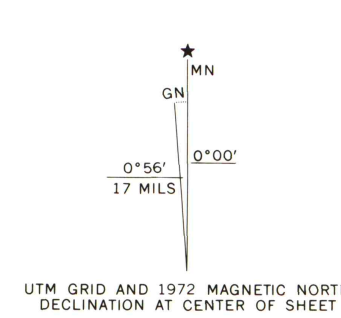


UNITED STATES
DEPARTMENT OF THE INTERIOR
GEOLOGICAL SURVEY

COLEMAN LAKE QUADRANGLE
WISCONSIN-MARINETTE CO.
7.5 MINUTE SERIES (TOPOGRAPHIC)
SE/4 GOODMAN 15' QUADRANGLE



Maped, edited, and published by the Geological Survey
Control by USGS and USC&GS
Topography by photogrammetric methods from aerial
photographs taken 1971. Field checked 1972
Hydrography compiled from information furnished by
Wisconsin Department of Natural Resources
Projection and 10,000-foot grid ticks: Wisconsin coordinate
system, central zone (Lambert conformal conic)
1000-meter Universal Transverse Mercator grid ticks,
zone 16, shown in blue. 1927 North American datum
Fine red dashed lines indicate selected fence and field lines where
generally visible on aerial photographs. This information is unchecked



SCALE 1:24,000
CONTOUR INTERVAL 20 FEET
DATUM IS MEAN SEA LEVEL
THIS MAP COMPLIES WITH NATIONAL MAP ACCURACY STANDARDS
FOR SALE BY U.S. GEOLOGICAL SURVEY, RESTON, VIRGINIA 22092
AND BY THE WISCONSIN GEOLOGICAL AND NATURAL HISTORY SURVEY, MADISON, WISCONSIN 53706
A FOLDER DESCRIBING TOPOGRAPHIC MAPS AND SYMBOLS IS AVAILABLE ON REQUEST



ROAD CLASSIFICATION
Primary highway, hard surface ————
Secondary highway, hard surface ————
Unimproved road ————
Interstate Route ————
U. S. Route ————
State Route ————

COLEMAN LAKE, WIS.
SE/4 GOODMAN 15' QUADRANGLE
N4530-W8815/7.5

1972
AMS 3375 III SE-SERIES V861

ARTHUR H. ROBINSON MAP LIBRARY
University of Wisconsin-Madison

1972
Copy
1-2