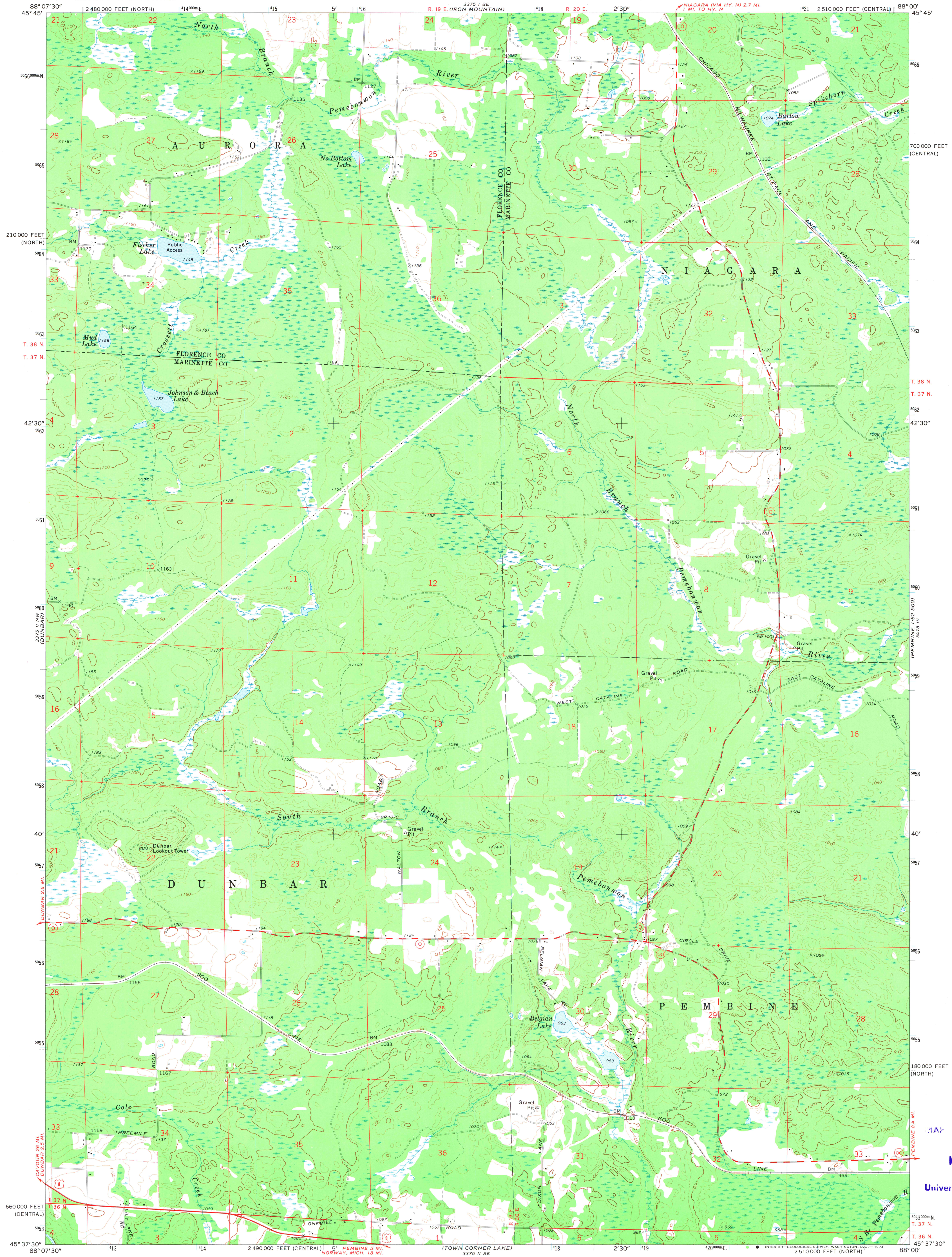


UNITED STATES  
DEPARTMENT OF THE INTERIOR  
GEOLOGICAL SURVEY

DUNBAR NE QUADRANGLE  
WISCONSIN  
7.5 MINUTE SERIES (TOPOGRAPHIC)  
NE/4 DUNBAR 15' QUADRANGLE



Mapped, edited, and published by the Geological Survey

Control by USGS and USC&GS

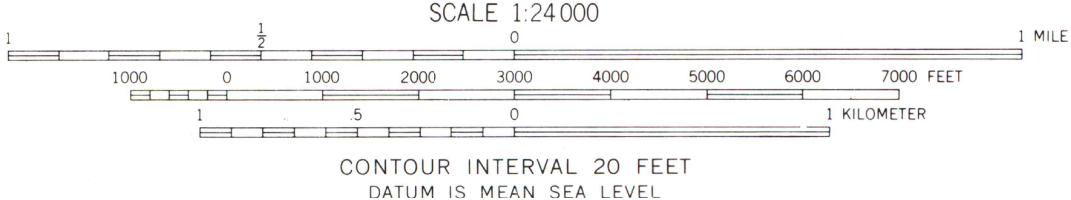
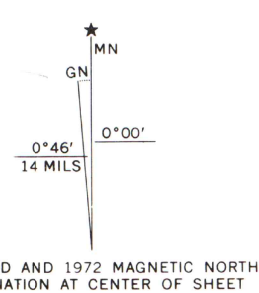
Topography by photogrammetric methods from aerial  
photographs taken 1971. Field checked 1972

Projection: Wisconsin coordinate system, central zone  
(Lambert conformal conic)

10,000-foot grid ticks based on Wisconsin coordinate  
system, central and north zones

1000-meter Universal Transverse Mercator grid ticks,  
zone 16, shown in blue. 1927 North American datum

Fine red dashed lines indicate selected fence and field lines where  
generally visible on aerial photographs. This information is unchecked



ROAD CLASSIFICATION	
Primary highway, hard surface	Light-duty road, hard or improved surface
Secondary highway, hard surface	Unimproved road
Interstate Route	U. S. Route
	State Route



DUNBAR NE, WIS.  
NE/4 DUNBAR 15' QUADRANGLE  
N4537.5-W8800/7.5

1972

AMS 3375 II NE-SERIES V861

AIR PHOTO  
RARY  
MAY 19 1974

University of Wisconsin

1972  
copy  
1-1