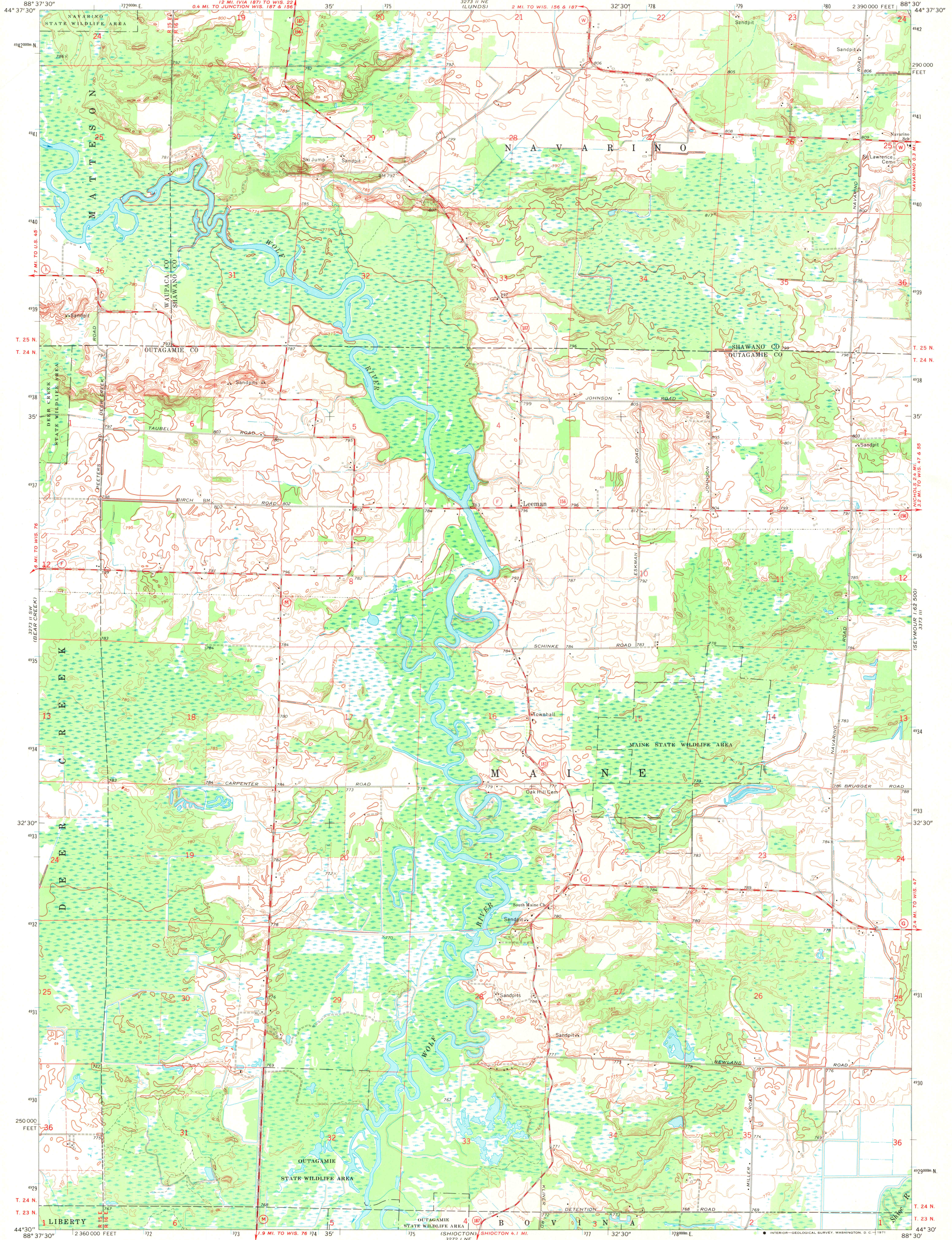


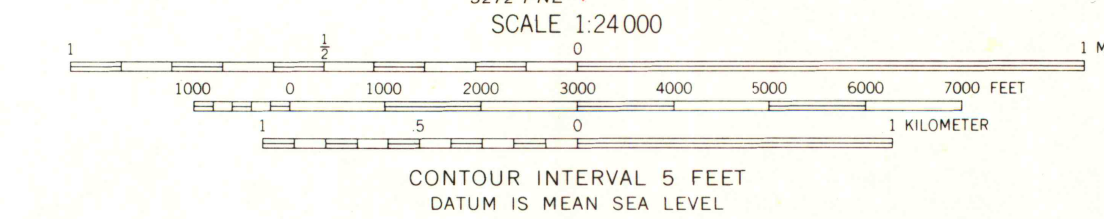
UNITED STATES  
DEPARTMENT OF THE INTERIOR  
GEOLOGICAL SURVEY

STATE OF WISCONSIN  
STATE HIGHWAY COMMISSION  
GEOLOGICAL AND NATURAL HISTORY SURVEY

LEEMAN QUADRANGLE  
WISCONSIN  
7.5 MINUTE SERIES (TOPOGRAPHIC)



Mapped, edited, and published by the Geological Survey in cooperation with the Wisconsin Highway Commission and Wisconsin Geological and Natural History Survey. Control by USGS and USC&GS. Topography by photogrammetric methods from aerial photographs taken 1968. Field checked 1969. Polyconic projection. 1927 North American datum. 10,000-foot grid based on Wisconsin coordinate system, central zone. 1000-meter Universal Transverse Mercator grid ticks, zone 16, shown in blue. Fine red dashed lines indicate selected fence and field lines where generally visible on aerial photographs. This information is unchecked.



ROAD CLASSIFICATION  
Secondary highway, all weather, Light-duty road, all weather, hard surface  
Unimproved road, fair or dry weather



MAP AND AIR PHOTO LOCATION  
LEEMAN, WIS.  
SE 1/4 EMBARRASS 15' QUADRANGLE  
N4430-W8830/7.5  
1969  
AMS 3273 II SE-SERIES V861

THIS MAP COMPLIES WITH NATIONAL MAP ACCURACY STANDARDS  
FOR SALE BY U.S. GEOLOGICAL SURVEY, WASHINGTON, D.C. 20242  
AND BY THE WISCONSIN GEOLOGICAL AND NATURAL HISTORY SURVEY, MADISON, WISCONSIN 53706  
A FOLDER DESCRIBING TOPOGRAPHIC MAPS AND SYMBOLS IS AVAILABLE ON REQUEST

1969  
copy  
1-1