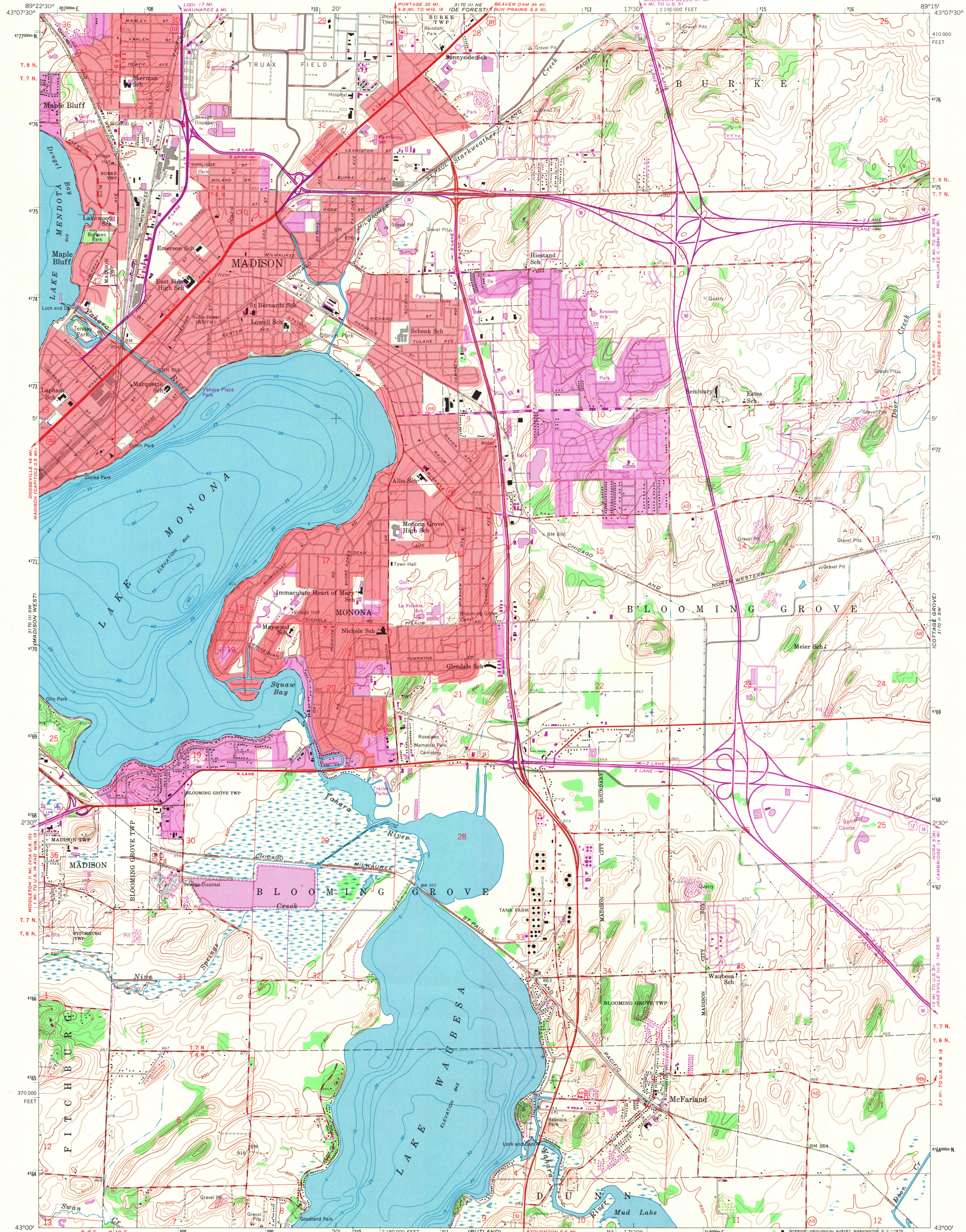
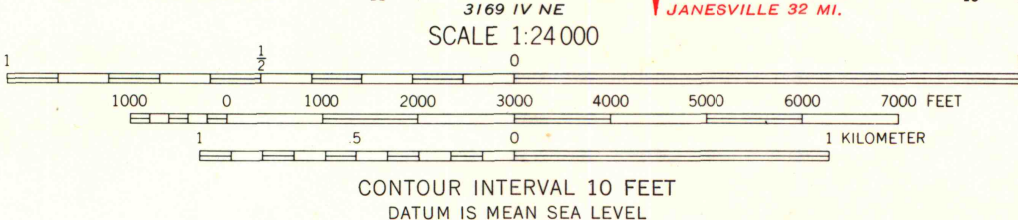


UNITED STATES  
DEPARTMENT OF THE INTERIOR  
GEOLOGICAL SURVEY

MADISON EAST QUADRANGLE  
WISCONSIN-DANE CO.  
7.5 MINUTE SERIES (TOPOGRAPHIC)  
SE/4 MADISON 15' QUADRANGLE



Mapped, edited, and published by the Geological Survey  
Control by USGS and USC&S  
Topography from aerial photographs by photogrammetric methods  
Aerial photographs taken 1957. Field check 1959  
Polyconic projection. 1927 North American datum  
10,000-foot grid based on Wisconsin coordinate system, south zone  
1000-meter Universal Transverse Mercator grid ticks,  
zone 16, shown in blue  
Red tint indicates areas in which only landmark buildings are shown  
Depth curves compiled from charts furnished by  
Wisconsin Department of Natural Resources  
Revisions shown in purple compiled from aerial photographs  
taken 1969. This information not field checked  
Purple tint indicates extension of urban areas



THIS MAP COMPLIES WITH NATIONAL MAP ACCURACY STANDARDS  
FOR SALE BY U. S. GEOLOGICAL SURVEY, WASHINGTON, D. C. 20242  
AND BY THE WISCONSIN GEOLOGICAL AND NATURAL HISTORY SURVEY, MADISON, WISCONSIN 53706  
A FOLDER DESCRIBING TOPOGRAPHIC MAPS AND SYMBOLS IS AVAILABLE ON REQUEST

MAR 2 2005



ROAD CLASSIFICATION  
Heavy-duty ——— Light-duty ———  
Medium-duty ——— Unimproved dirt ———  
U. S. Route ——— State Route ———  
Interstate Route ———

MADISON EAST, WIS.  
SE/4 MADISON 15' QUADRANGLE  
N4300-W8915/7.5

1959

PHOTOREVISED 1969  
AMS 3170 III SE-SERIES V861

ARTHUR H. ROBINSON MAP LIBRARY  
University of Wisconsin-Madison

1969  
COPY  
1-2