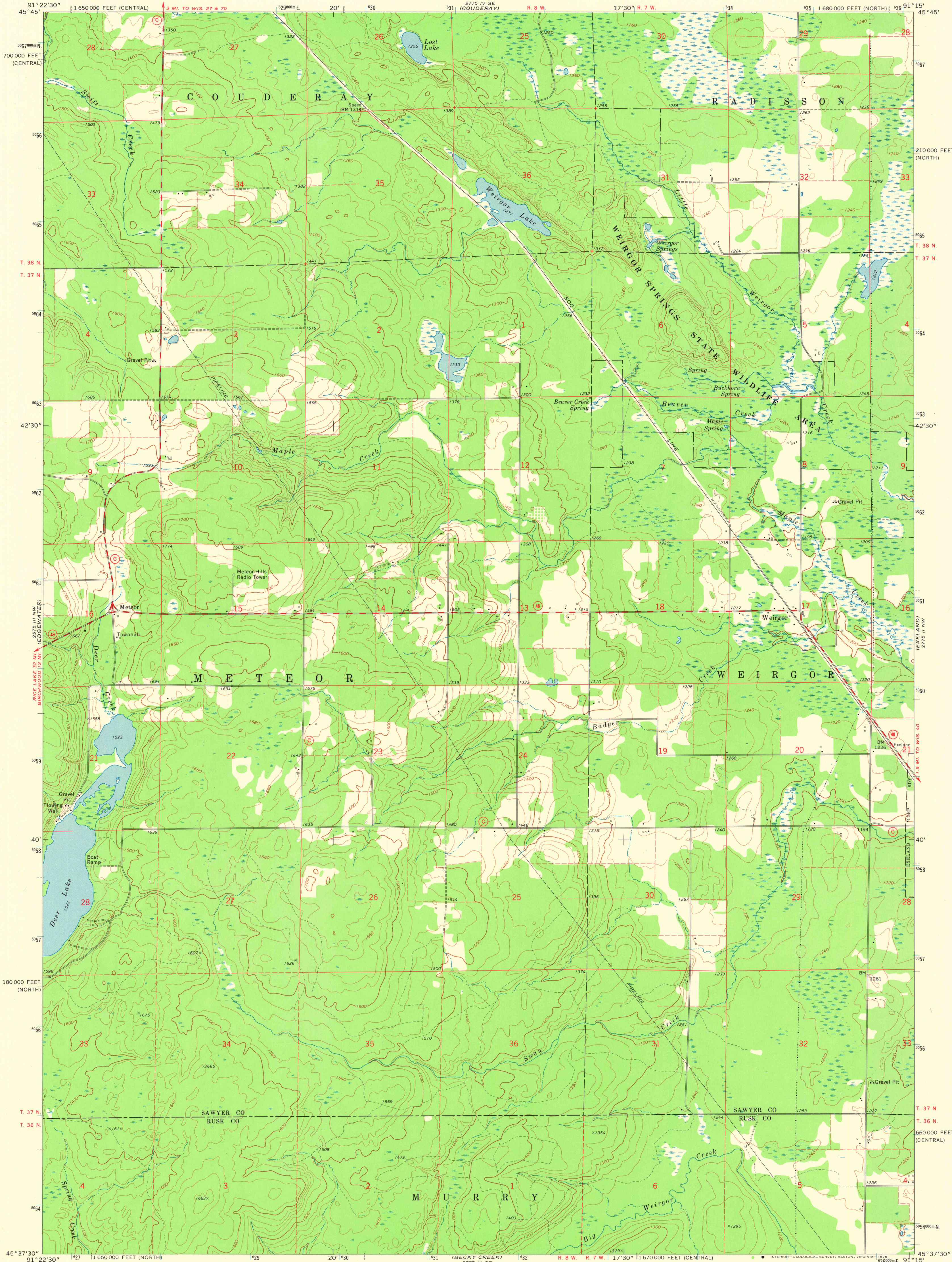


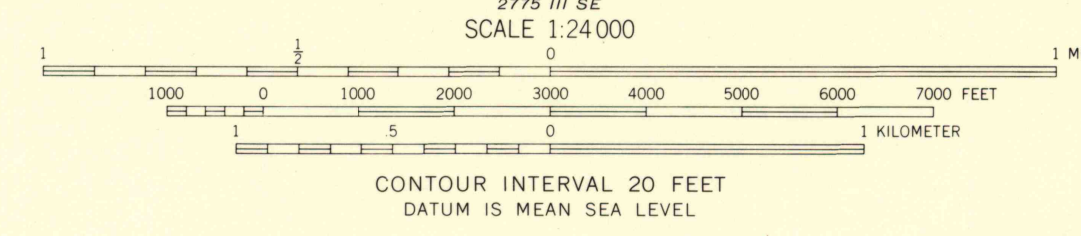
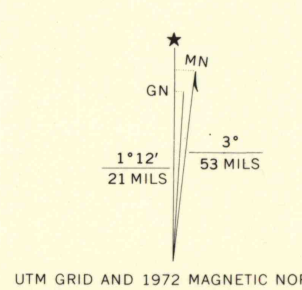
UNITED STATES  
DEPARTMENT OF THE INTERIOR  
GEOLOGICAL SURVEY

STATE OF WISCONSIN  
STATE HIGHWAY COMMISSION  
GEOLOGICAL AND NATURAL HISTORY SURVEY

WEIRGOR QUADRANGLE  
WISCONSIN  
7.5 MINUTE SERIES (TOPOGRAPHIC)  
NE 1/4 METEOR 15' QUADRANGLE



Mapped, edited, and published by the Geological Survey  
in cooperation with the Wisconsin Highway Commission  
and Wisconsin Geological and Natural History Survey  
Control by USGS and USC&GS  
Topography by photogrammetric methods from aerial  
photographs taken 1971. Field checked 1972  
Projection: Wisconsin coordinate system, north zone  
(Lambert conformal conic)  
10,000-foot grid ticks based on Wisconsin coordinate  
system, north and central zones  
1000-meter Universal Transverse Mercator grid ticks,  
zone 15, shown in blue. 1927 North American datum  
Fine red dashed lines indicate selected fence and field lines where  
generally visible on aerial photographs. This information is unchecked



ROAD CLASSIFICATION  
Primary highway, hard surface  
Secondary highway, hard surface  
Unimproved road  
Light-duty road, hard or improved surface  
Unimproved road  
Interstate Route  
U. S. Route  
State Route

WEIRGOR, WIS.  
NE 1/4 METEOR 15' QUADRANGLE  
N4537.5-W9115.7.5  
1972  
AMS 2775 III NE-SERIES V861

JAN 9 1975  
3530