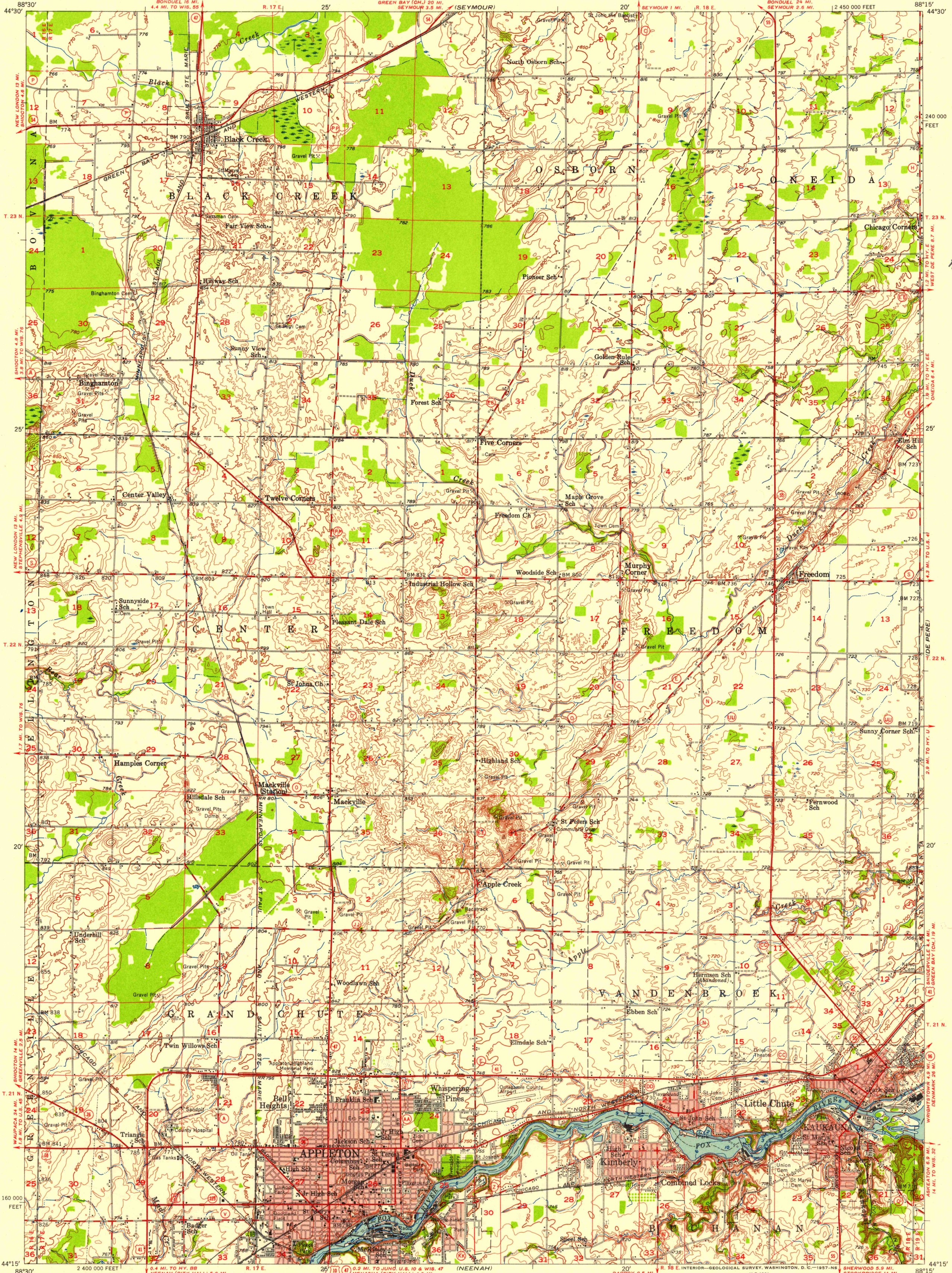


TEMPERATURE
1:49.00

UNITED STATES
DEPARTMENT OF THE INTERIOR
GEOLOGICAL SURVEY

APPLETON QUADRANGLE
WISCONSIN-OUTAGAMIE CO.
15 MINUTE SERIES (TOPOGRAPHIC)

(GREEN BAY)



U.S.G.S.
FILE COPY
TOPOGRAPHIC DIVISION

U.S.G.S.
FILE COPY
TOPOGRAPHIC DIVISION

Mapped, edited, and published by the Geological Survey
Control by USGS and USC&GS
Topography from aerial photographs by Kelsh plotter
and by plane-table surveys 1955. Aerial photographs taken 1953.
Hydrography compiled from U.S. Lake Survey chart 726 (1951)
Polyconic projection. 1927 North American datum
10,000-foot grid based on Wisconsin coordinate system,
central zone
Red tint indicates areas in which only
landmark buildings are shown

SCALE 1:62,500

CONTOUR INTERVAL 10 FEET
DATUM IS MEAN SEA LEVEL
DEPTH CURVES AND SOUNDINGS IN FEET—DATUM IS NORMAL POOL LEVEL

ROAD CLASSIFICATION

Heavy-duty	Light-duty
Medium-duty	Unimproved dirt
U.S. Route	State Route

QUADRANGLE LOCATION

WISCONSIN

THE SW 1/4 of this area also covered by
1:24,000 scale map of Appleton,
7.5 minute quadrangle, surveyed 1955.

APPLETON, WIS.
N4415-W8815/15

1955

JAN 23 1957
3160