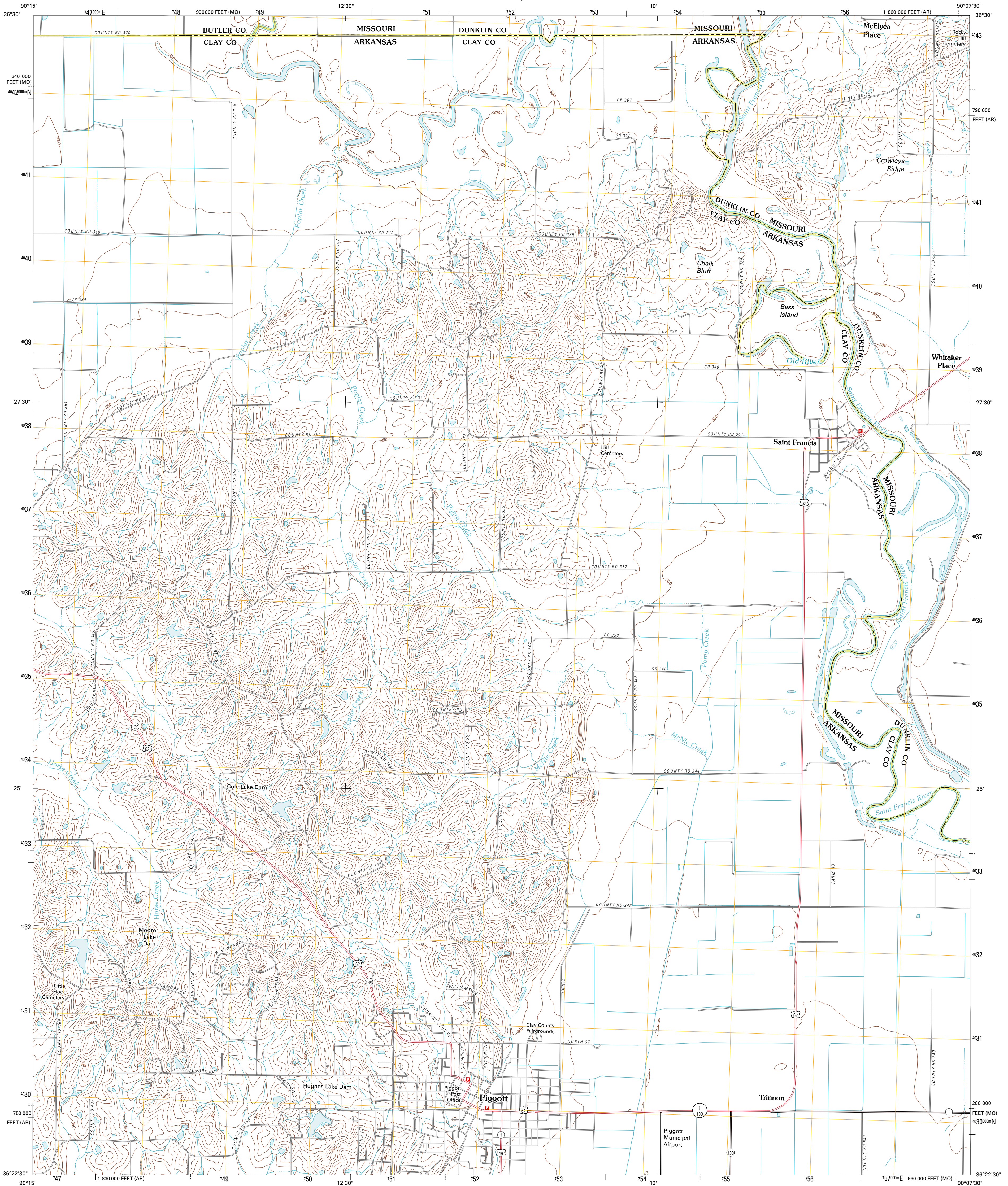




U.S. DEPARTMENT OF THE INTERIOR
U. S. GEOLOGICAL SURVEY



PIGGOTT QUADRANGLE
ARKANSAS-MISSOURI
7.5-MINUTE SERIES



Produced by the United States Geological Survey
North American Datum of 1983 (NAD83)
World Geodetic System of 1984 (WGS84). Projection and
1 000-meter grid: Universal Transverse Mercator, Zone 15S
10 000-foot ticks: Arkansas Coordinate System of 1983
(north zone), Missouri Coordinate System of 1983 (east zone)

Imagery:.....NAIP, August 2009 - September 2009
Roads:.....©2006-2010 Tele Atlas
Names:.....GNIS, 2010
Hydrography:.....National Hydrography Dataset, 2009
Contours:.....National Elevation Dataset, 2006
Boundaries:.....Census, IBWC, IBC, USGS, 1972 - 2010

UTM GRID AND 2011 MAGNETIC NORTH
DECLINATION AT CENTER OF SHEET

0° 42' N
12 MILS
1° 40' N
30 MILS

U.S. National Grid
100,000-m Square ID
YA
Grid Zone Designation
15S

SCALE 1:24 000

1 000 0 500 0 500 1000 2000
KILOMETERS
1 000 0 1000 2000 3000 4000 5000 6000 7000 8000 9000 10000
METERS
1 000 0 1000 2000 3000 4000 5000 6000 7000 8000 9000 10000
FEET

CONTOUR INTERVAL 10 FEET
NORTH AMERICAN VERTICAL DATUM OF 1988

This map was produced to conform with version 0.5.10
of the USGS US Topo Product Standard.
A metadata file associated with this product is draft version 0.5.16



Oglesville	Glenmerville	Valley Ridge
Pollard	Piggott	Campbell
Rector	Greenway	Kennett North

ROAD CLASSIFICATION

Interstate Route
US Route
Ramp
State Route
Local Road
4WD

PIGGOTT, AR-MO
2011