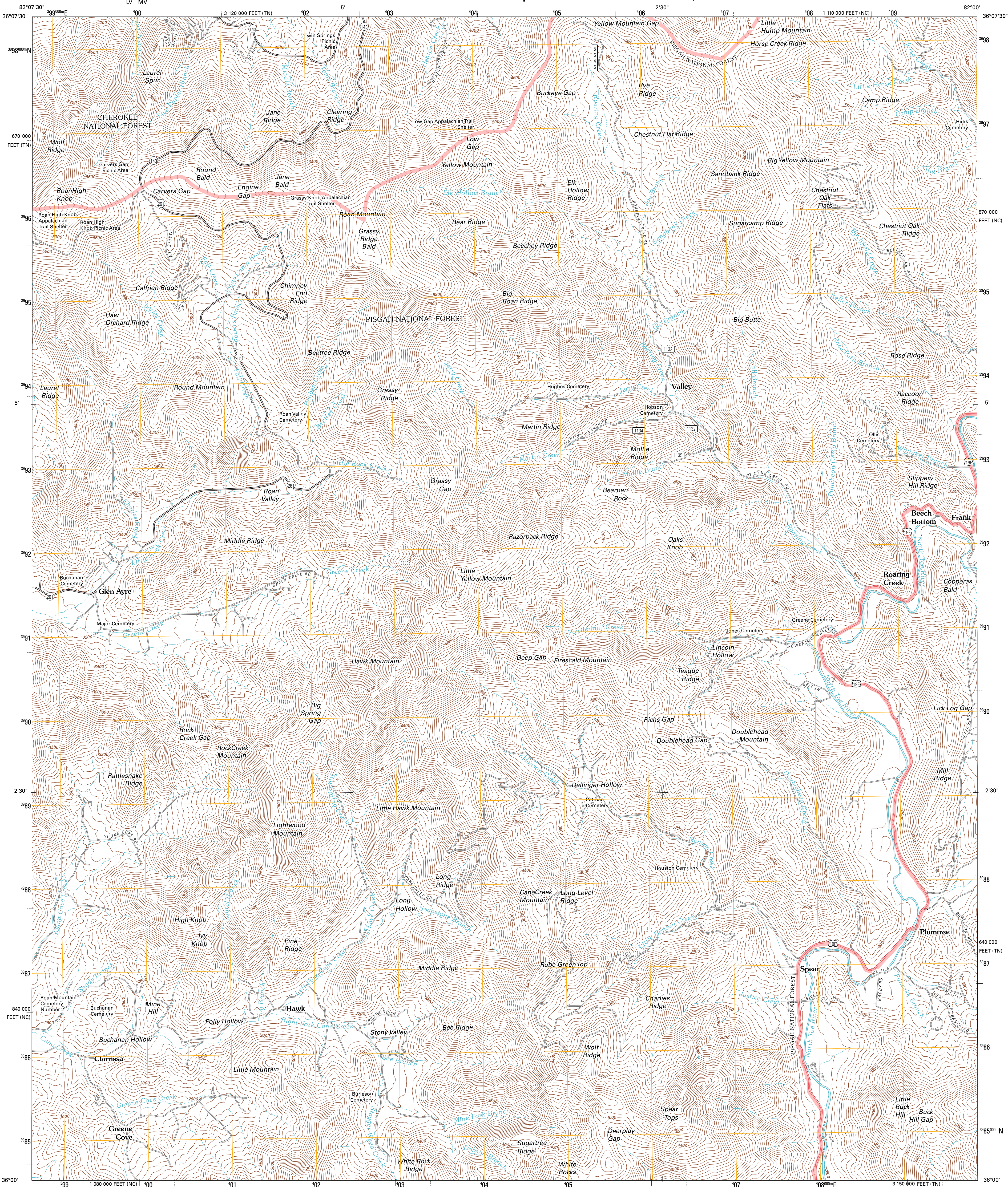




U.S. DEPARTMENT OF THE INTERIOR  
U. S. GEOLOGICAL SURVEY

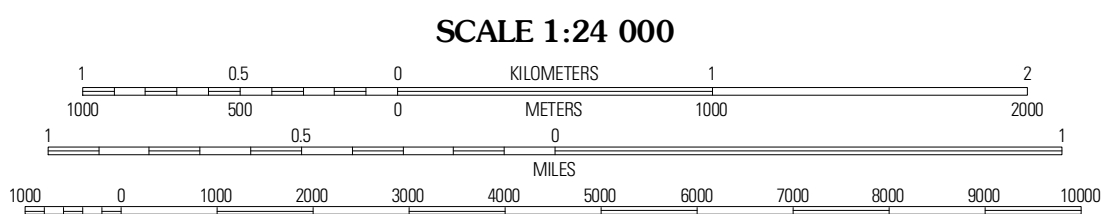
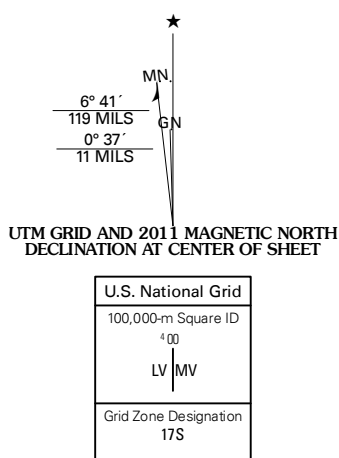


CARVERS GAP QUADRANGLE  
NORTH CAROLINA-TENNESSEE  
7.5-MINUTE SERIES



Produced by the United States Geological Survey  
North American Datum of 1983 (NAD83)  
World Geodetic System of 1984 (WGS84). Projection and  
1 000-meter grid: Universal Transverse Mercator, Zone 17S  
10 000-foot ticks: North Carolina Coordinate System of  
1983, Tennessee Coordinate System of 1983

Imagery.....NAIP, September 2009  
Roads.....©2006-2010 Tele Atlas  
Roads within US Forest Service Lands.....FSTopo Data  
with limited Forest Service updates, 2009  
Names.....CNS, 2010  
Hydrography.....National Hydrography Dataset, 2009  
Contours.....National Elevation Dataset, 2008



CONTOUR INTERVAL 40 FEET  
NORTH AMERICAN VERTICAL DATUM OF 1988  
This map was produced to conform with version 0.5.10 of the  
draft USGS Standards for 7.5-Minute Quadrangle Maps.  
A metadata file associated with this product is draft version 0.5.12



QUADRANGLE LOCATION		
Iron Mountain Gap	White Rocks Mountain	Elk Park
Bakersville	Carvers Gap	Newland
Micaville	Spruce Pine	Linville Falls

ROAD CLASSIFICATION  
Interstate Route  
US Route  
Ramp  
State Route  
Local Road  
4WD  
US Route  
FS Passenger Route  
FS Primary Route  
FS High Clearance Route  
Check with local Forest Service unit  
for current travel conditions and restrictions.

CARVERS GAP, NC-TN  
2011