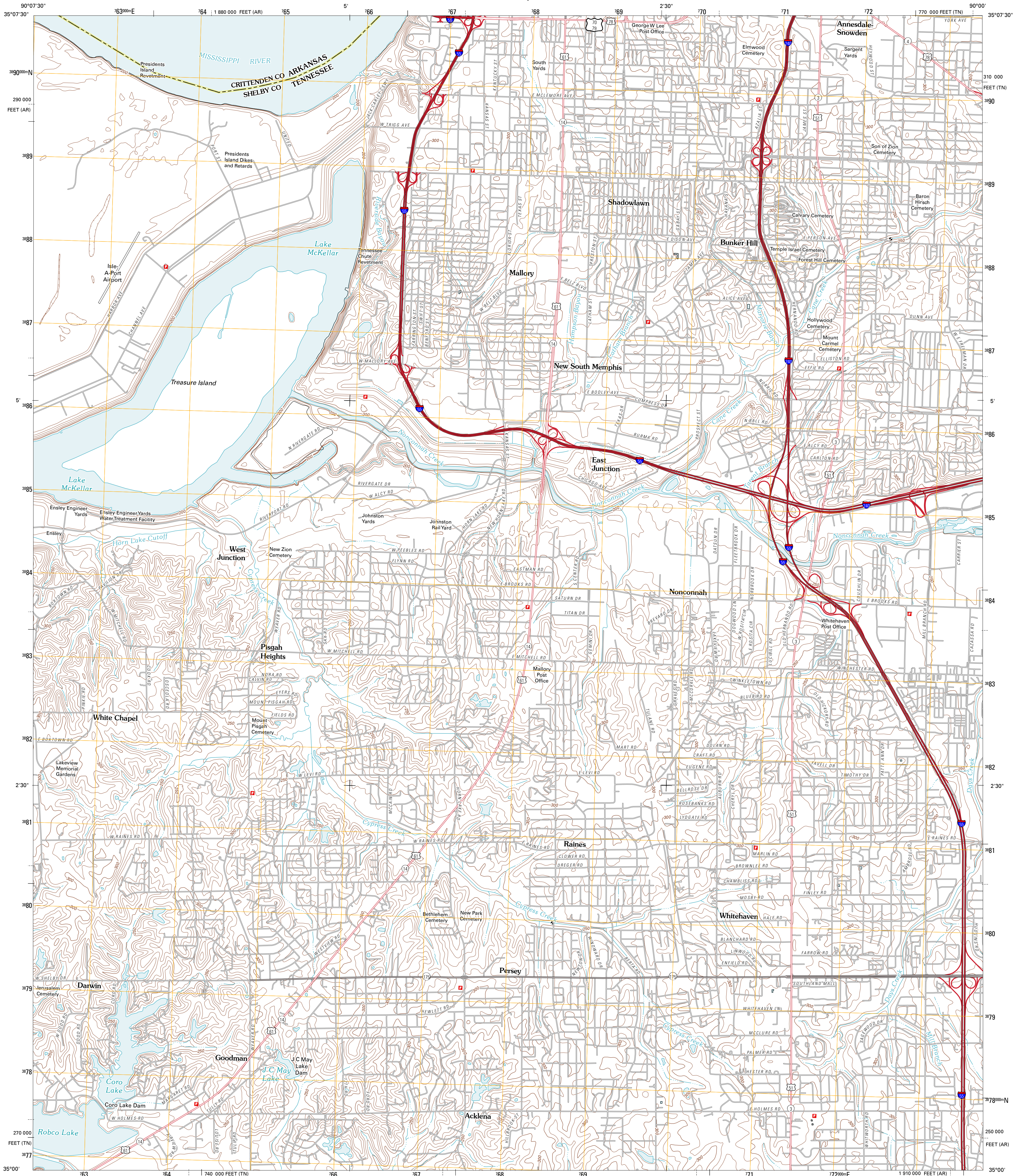




U.S. DEPARTMENT OF THE INTERIOR  
U. S. GEOLOGICAL SURVEY



SOUTHWEST MEMPHIS QUADRANGLE  
TENNESSEE-ARKANSAS  
7.5-MINUTE SERIES

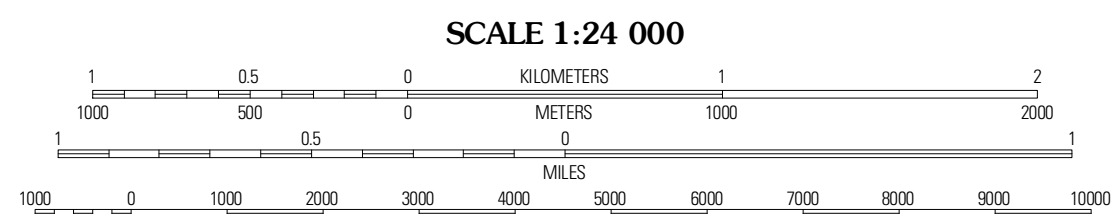


Produced by the United States Geological Survey  
North American Datum of 1983 (NAD83)  
World Geodetic System of 1984 (WGS84). Projection and  
1 000-meter grid. Universal Transverse Mercator. Zone 15S  
10 000-foot ticks: Tennessee Coordinate System of 1983,  
Arkansas Coordinate System of 1983 (north zone)

Imagery.....NAIP, July 2010 - August 2010  
Roads.....©2006-2010 Tele Atlas  
Names.....GNIS, 2010  
Hydrography.....National Hydrography Dataset, 2010  
Contours.....National Elevation Dataset, 2001  
Boundaries.....Census, IBWC, IBC, USGS, 1972 - 2010

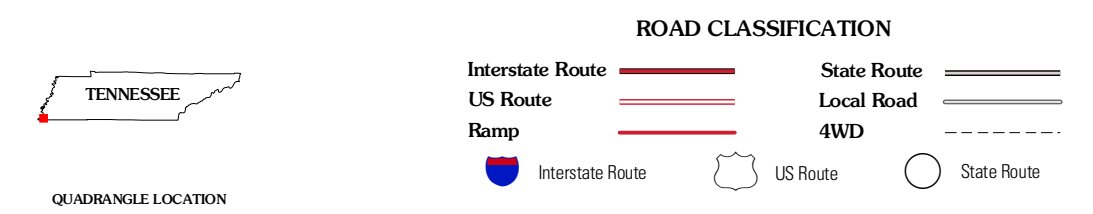
UTM GRID AND 2011 MAGNETIC NORTH  
DECLINATION AT CENTER OF SHEET

U.S. National Grid
100,000-m Square ID
YU
Grid Zone Designation
15S



CONTOUR INTERVAL 10 FEET  
NORTH AMERICAN VERTICAL DATUM OF 1988

This map was produced to conform with version 0.5.10  
of the USGS US Topo Product Standard.  
A metadata file associated with this product is draft version 0.5.16



QUADRANGLE LOCATION		
West Memphis	Northwest Memphis	Northeast Memphis
Fletcher Lake	Southwest Memphis	Southeast Memphis
Lake Cormorant	Horn Lake	Pleasant Hill

SOUTHWEST MEMPHIS, TN-AR  
2011