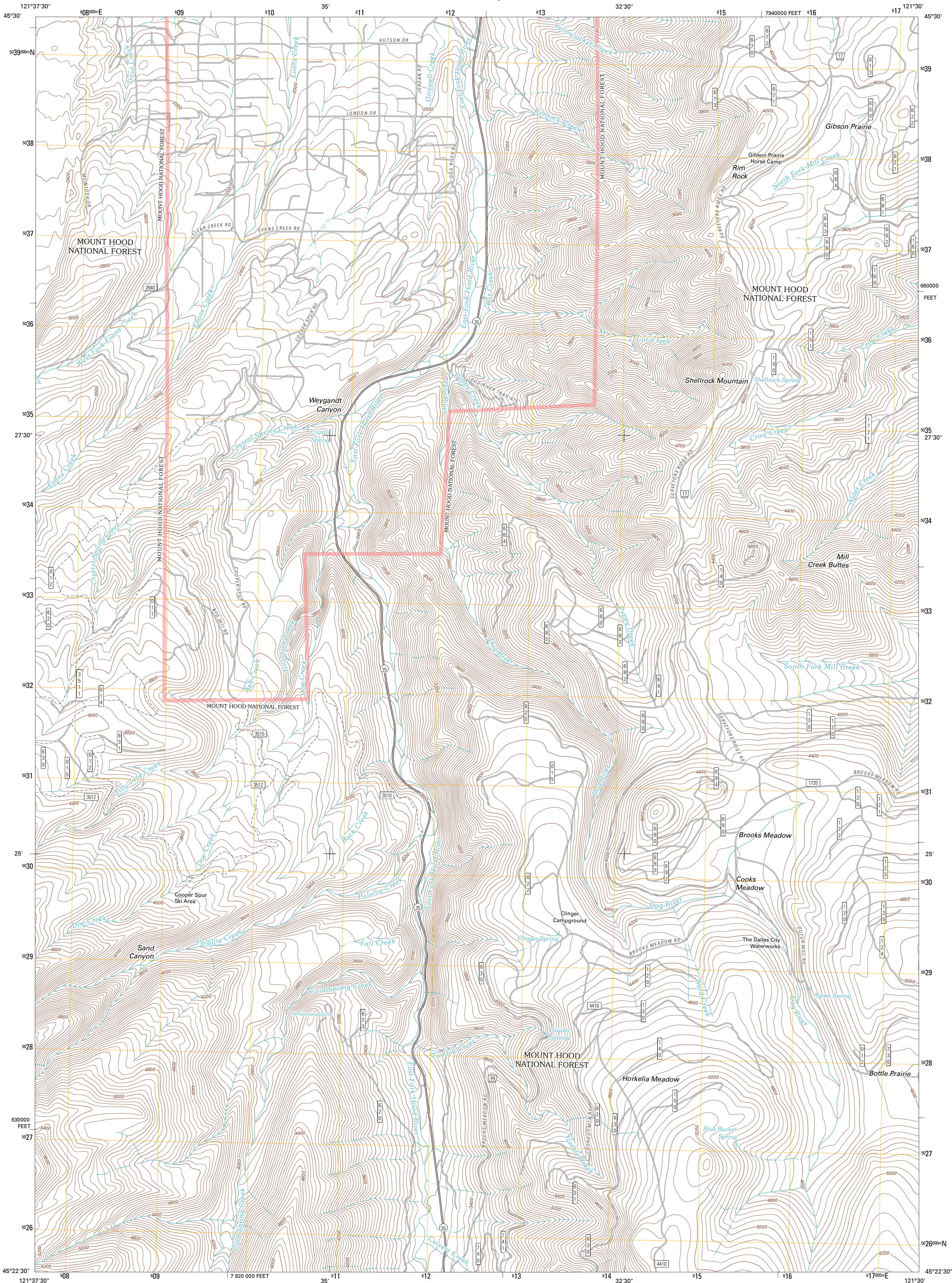




U.S. DEPARTMENT OF THE INTERIOR
U. S. GEOLOGICAL SURVEY

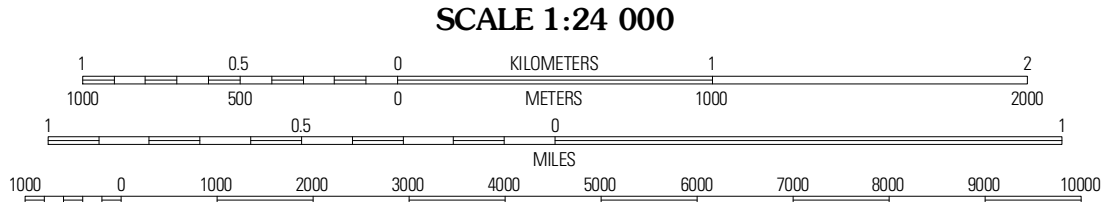
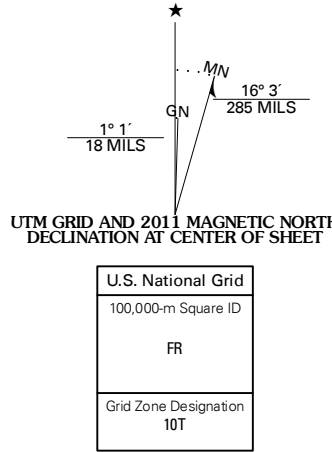


DOG RIVER QUADRANGLE
OREGON-HOOD RIVER CO.
7.5-MINUTE SERIES



Produced by the United States Geological Survey
North American Datum of 1983 (NAD83)
World Geodetic System of 1984 (WGS84). Projection and
1 000-meter grid. Universal Transverse Mercator, Zone 10T
10 000-foot ticks. Oregon Coordinate System of 1983 (north
zone)

Imagery.....NAIP, June 2009 - July 2009
Roads.....6/2006-2010 Tele Atlas
Roads within US Forest Service Lands.....FSTopo Data
with limited Forest Service updates, 2009
Names.....GNS, 2010
Hydrography.....National Hydrography Dataset, 2009
Contours.....National Elevation Dataset, 1999
Boundaries.....Census, IBWC, IBC, USGS, 1972 - 2010



CONTOUR INTERVAL 40 FEET
NORTH AMERICAN VERTICAL DATUM OF 1988
This map was produced to conform with version 0.5.10
of the USGS US Topo Product Standard.
A metadata file associated with this product is draft version 0.5.16



Des	Parkdale	Ketchum Reservoir
Mount Hood North	Dog River	Friendie Butte
Mount Hood South	Badger Lake	Flag Point

ROAD CLASSIFICATION
Interstate Route
US Route
Ramp
State Route
Local Road
4WD
Interstate Route
US Route
FS Passenger
Route
FS Primary Route
FS High Clearance
Route
Check with local Forest Service unit
for current travel conditions and restrictions.

DOG RIVER, OR
2011