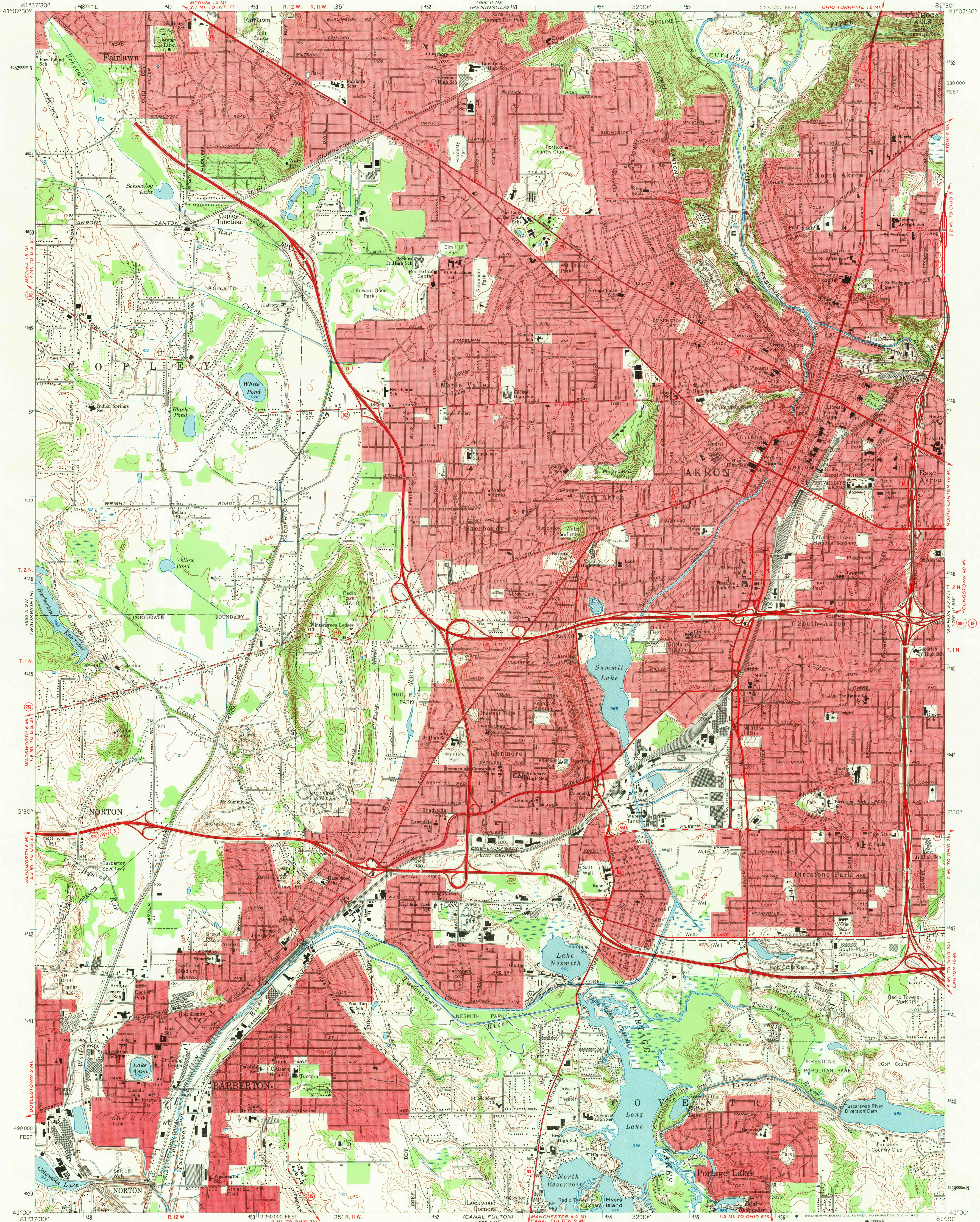


UNITED STATES
DEPARTMENT OF THE INTERIOR
GEOLOGICAL SURVEY

AKRON WEST QUADRANGLE
OHIO—SUMMIT CO.
7.5 MINUTE SERIES (TOPOGRAPHIC)
SE/4 AKRON 15' QUADRANGLE



Mapped, edited, and published by the Geological Survey
Revised in cooperation with State of Ohio Agencies
Control by USGS and USCGS
Topography by photogrammetric methods from aerial photographs
taken 1957. Field checked 1958. Revised from aerial
photographs taken 1966. Field checked 1967.
Polyconic projection. 1927 North American datum
10,000-foot grid based on Ohio coordinate system, north zone
1000-meter Universal Transverse Mercator grid ticks,
zone 17, shown in blue
Fine red dashed lines indicate selected fence and field lines where
generally visible on aerial photographs. This information is unchecked
Red tint indicates areas in which only landmark buildings are shown
Entire area lies within the Connecticut Western Reserve
Land lines established by private subdivision of the
Connecticut Western Reserve

UTM GRID AND 1967 MAGNETIC NORTH
DECLINATION AT CENTER OF SHEET

THIS MAP COMPLIES WITH NATIONAL MAP ACCURACY STANDARDS
FOR SALE BY U.S. GEOLOGICAL SURVEY, WASHINGTON, D. C. 20242
A FOLDER DESCRIBING TOPOGRAPHIC MAPS AND SYMBOLS IS AVAILABLE ON REQUEST

USGS
Historical File
Topographic Division



ROAD CLASSIFICATION
Primary highway, all weather, hard surface
Secondary highway, all weather, hard surface
Light-duty road, all weather, improved surface
Unimproved road, fair or dry weather
Interstate Route
U. S. Route
State Route

U.S.G.S.
FILE COPY
TOPOGRAPHIC DIVISION

AKRON WEST, OHIO
SE/4 AKRON 15' QUADRANGLE
N4100—W8130/7.5

1967
AMS 4666 II SE—SERIES V852

FEB 20 1970