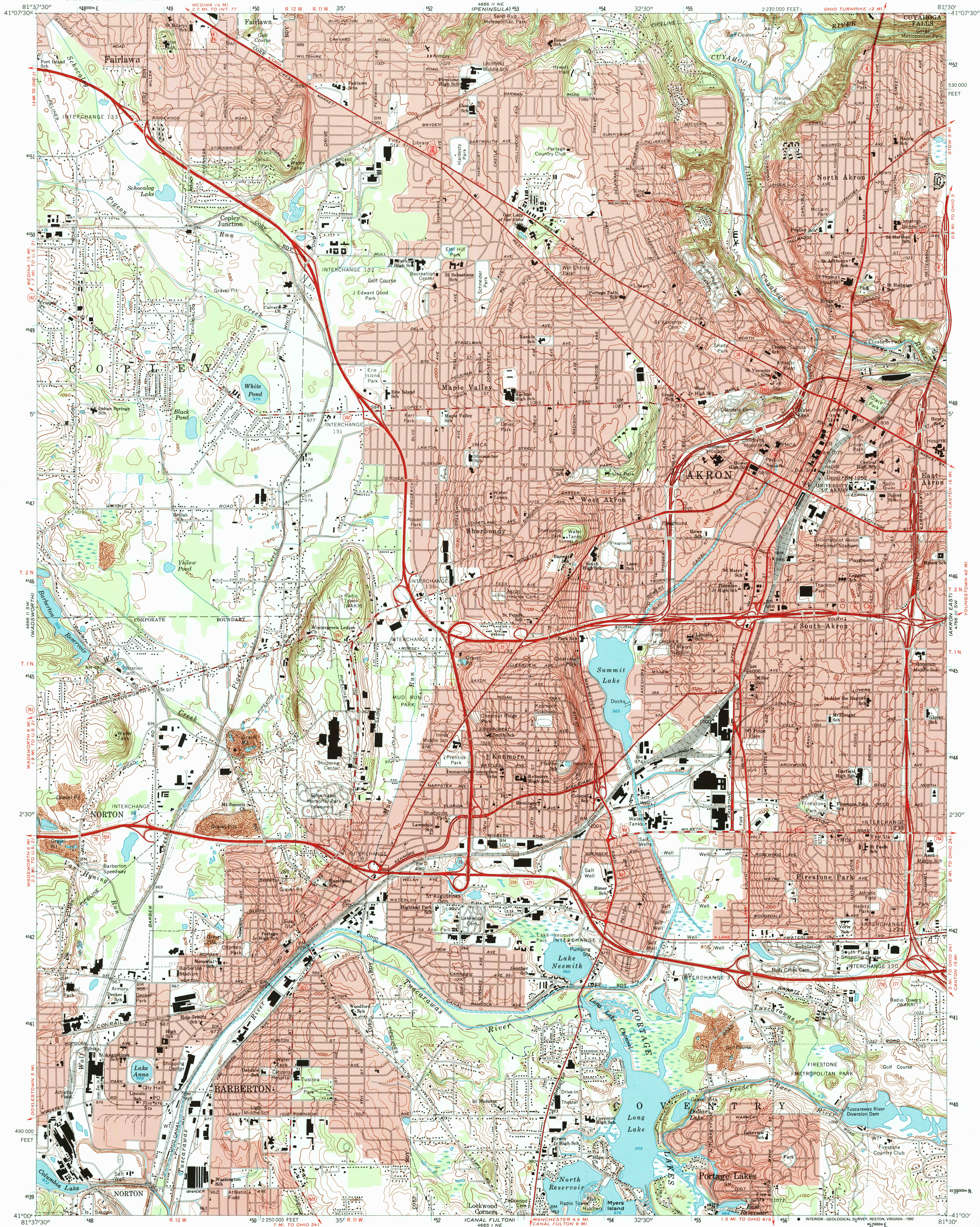


UNITED STATES  
DEPARTMENT OF THE INTERIOR  
GEOLOGICAL SURVEY

AKRON WEST QUADRANGLE  
OHIO—SUMMIT CO.  
7.5 MINUTE SERIES (TOPOGRAPHIC)



Mapped, edited, and published by the Geological Survey  
Revised in cooperation with State of Ohio Agencies  
Control by USGS and USCGS  
Topography by photogrammetric methods from aerial photographs  
taken 1957. Field checked 1958. Revised from aerial  
photographs taken 1966. Field checked 1967  
Polyconic projection. 1927 North American datum  
10,000-foot grid based on Ohio coordinate system, north zone  
1000-meter Universal Transverse Mercator grid ticks,  
zone 17, shown in blue  
The difference between 1927 North American Datum and North  
American Datum of 1983 (NAD 83) for 7.5-minute intersections  
is given in USGS Bulletin 1875. The NAD 83 is shown by  
dashed corner ticks  
Entire area lies within the Connecticut Western Reserve  
Land lines established by private subdivision of the  
Connecticut Western Reserve

UTM GRID AND 1992 MAGNETIC NORTH  
DECLINATION AT CENTER OF SHEET

SCALE 1:24,000  
NATIONAL GEODETIC VERTICAL DATUM OF 1929  
CONTOUR INTERVAL 10 FEET  
1 0 1000 2000 3000 4000 5000 6000 7000 FEET  
1 KILOMETER

THIS MAP COMPLIES WITH NATIONAL MAP ACCURACY STANDARDS  
FOR SALE BY U. S. GEOLOGICAL SURVEY  
DENVER, COLORADO 80225 OR RESTON, VIRGINIA 22092  
A FOLDER DESCRIBING TOPOGRAPHIC MAPS AND SYMBOLS IS AVAILABLE ON REQUEST



QUADRANGLE LOCATION  
Revisions compiled in cooperation with State of  
Ohio agencies from aerial photographs  
taken 1988 and other sources. Contours not  
revised. This information not field checked  
Map edited 1992

ROAD CLASSIFICATION  
Primary highway, all weather, hard surface  
Secondary highway, all weather, hard surface  
Light-duty road, all weather, improved surface  
Unimproved road, fair or dry weather  
Interstate Route  
U. S. Route  
State Route

AKRON WEST, OHIO  
41081-A5-TF-024  
1967  
REVISED 1992  
DMA 4666 II SE—SERIES V852

OCT 1992