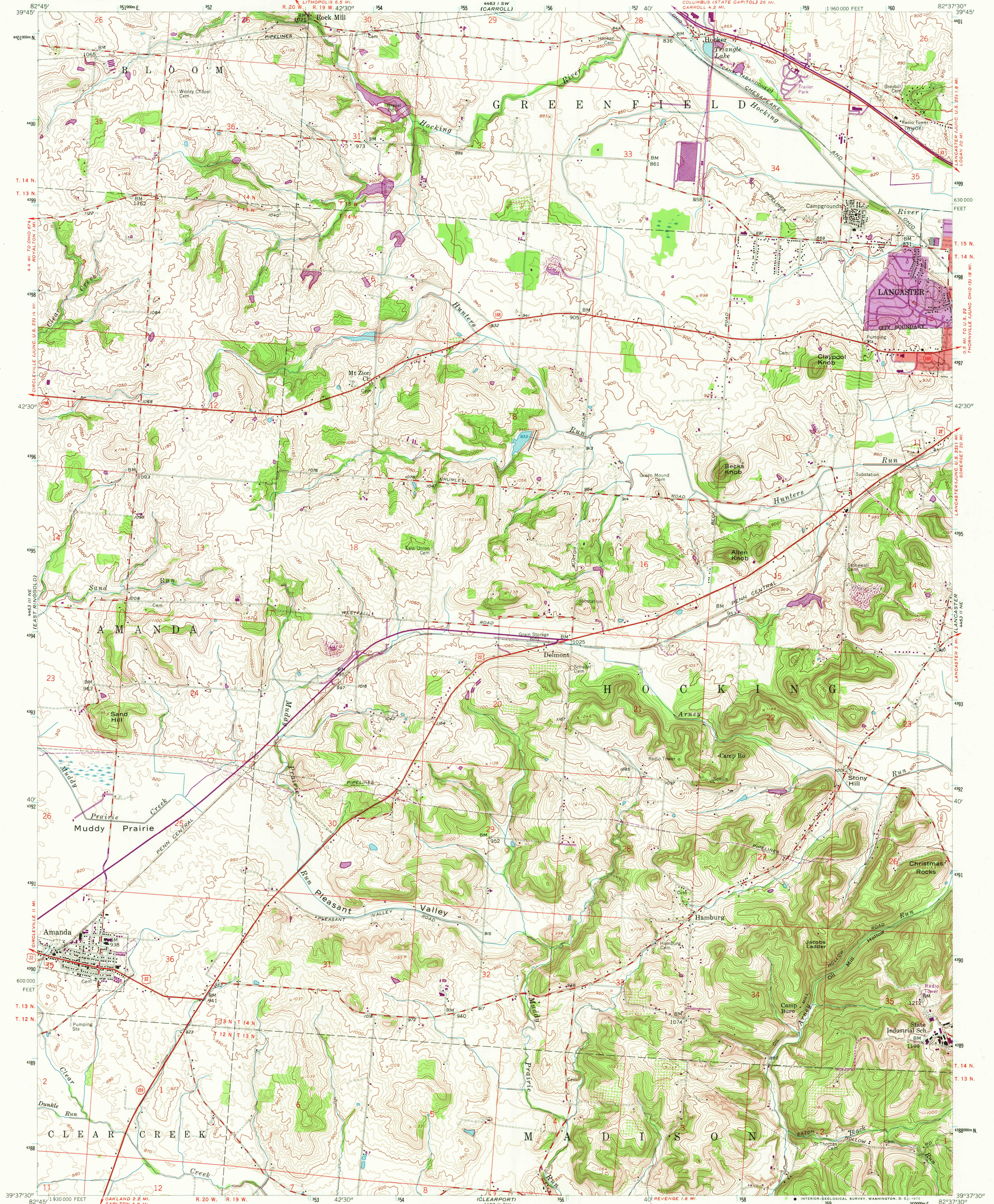
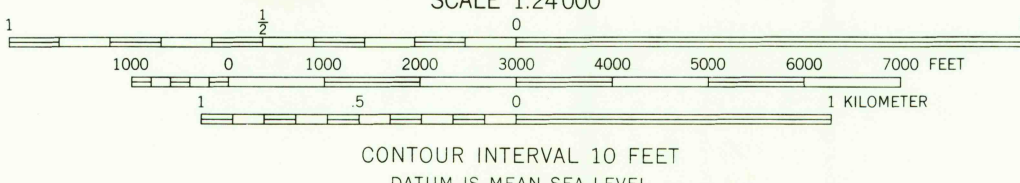
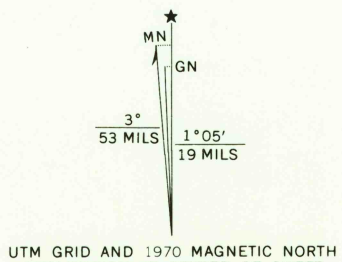


UNITED STATES
DEPARTMENT OF THE INTERIOR
GEOLOGICAL SURVEY

AMANDA QUADRANGLE
OHIO—FAIRFIELD CO.
7.5 MINUTE SERIES (TOPOGRAPHIC)
NW 1/4 LANCASTER 15' QUADRANGLE



Mapped, edited, and published by the Geological Survey
Control by USGS and USC&GS
Topography from aerial photographs by photogrammetric methods
Aerial photographs taken 1955. Field check 1958
Polyconic projection. 1927 North American datum
10,000-foot grid based on Ohio coordinate system, south zone
1000-meter Universal Transverse Mercator grid ticks,
zone 17, shown in blue
Red tint indicates areas in which only
landmark buildings are shown
Unchecked elevations are shown in brown
Land lines based on the Ohio River Base



ROAD CLASSIFICATION
Heavy-duty ——— Light-duty ———
Medium-duty ——— Unimproved dirt ———
U.S. Route ——— State Route ———

AMANDA, OHIO
N 3937.5—W 8237.5/7.5
1958
PHOTOREVISED 1970
AMS 4463 II NW—SERIES V852

THIS MAP COMPLIES WITH NATIONAL MAP ACCURACY STANDARDS
FOR SALE BY U.S. GEOLOGICAL SURVEY, WASHINGTON, D.C. 20242
A FOLDER DESCRIBING TOPOGRAPHIC MAPS AND SYMBOLS IS AVAILABLE ON REQUEST

Revisions shown in purple compiled in cooperation with
State of Ohio agencies from aerial photographs taken
1970. This information not field checked
Purple tint indicates extension of urban areas

USGS
HISTORICAL FILE
TOPOGRAPHIC DIVISION
MAR 17 1972

3020