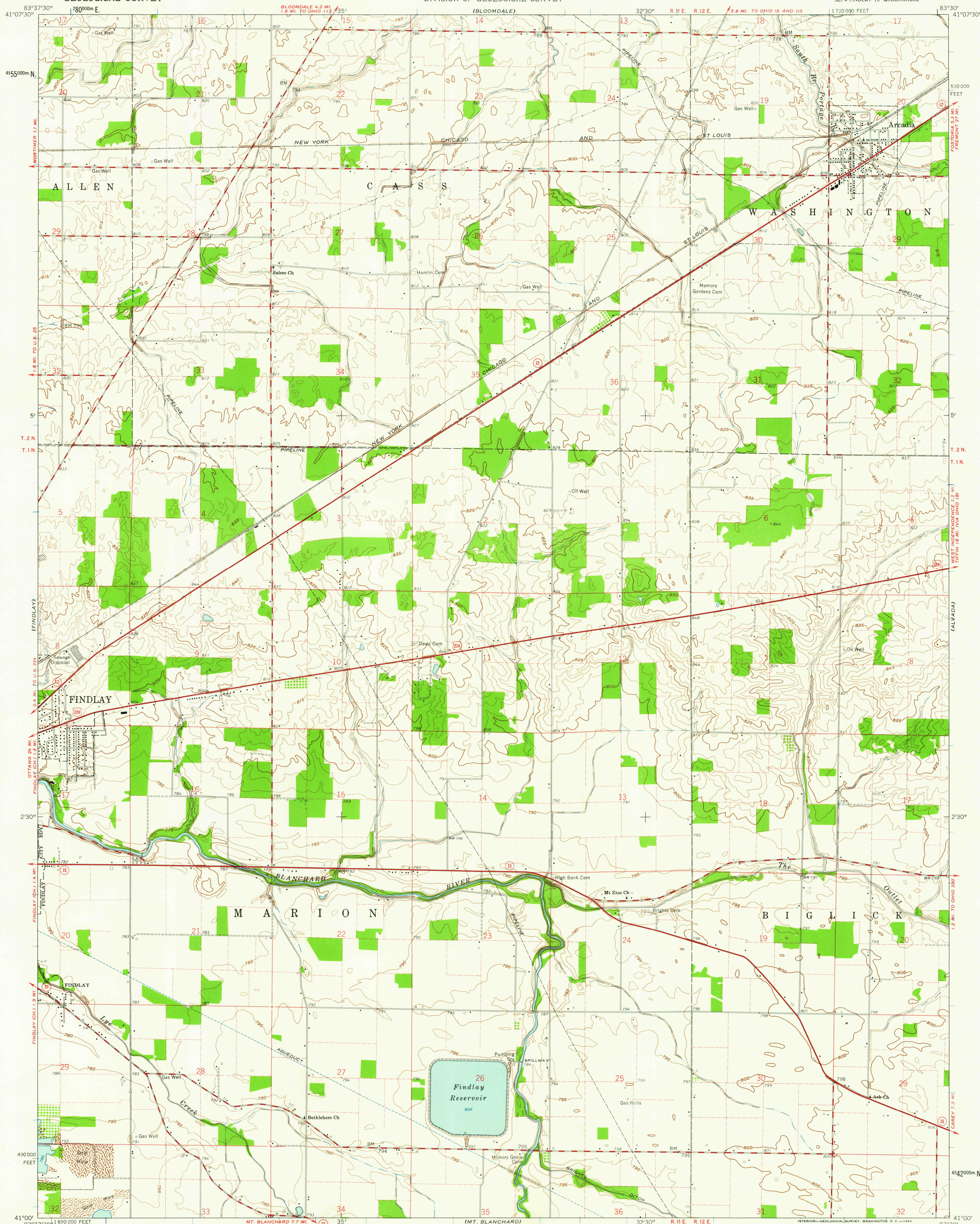


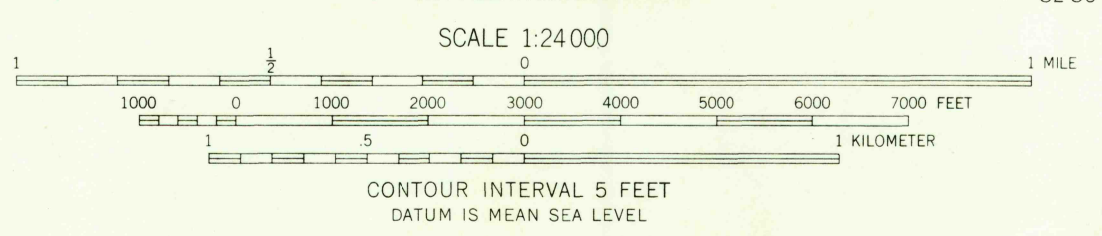
UNITED STATES  
DEPARTMENT OF THE INTERIOR  
GEOLOGICAL SURVEY

STATE OF OHIO  
DEPARTMENT OF HIGHWAYS  
DEPARTMENT OF NATURAL RESOURCES  
DIVISION OF GEOLOGICAL SURVEY

ARCADIA QUADRANGLE  
OHIO-HANCOCK CO.  
7.5 MINUTE SERIES (TOPOGRAPHIC)  
SE 1/4 FINDLAY 15' QUADRANGLE



Mapped, edited, and published by the Geological Survey  
Control by USGS and USC&GS  
Topography from aerial photographs by photogrammetric methods  
and by planimetric surveys 1960. Aerial photographs taken 1959  
Polyconic projection. 1927 North American datum  
10,000-foot grid based on Ohio coordinate system, north zone  
1000-meter Universal Transverse Mercator grid ticks,  
zone 17, shown in blue  
Entire area lies within Congress Lands  
Land lines based on the First Principal Meridian  
Fine red dashed lines indicate selected fence and field lines where  
generally visible on aerial photographs. This information is unchecked



USGS  
Historical File  
Topographic Division

ROAD CLASSIFICATION  
Heavy-duty ——— Light-duty ———  
Medium-duty ——— Unimproved dirt ———  
U.S. Route ——— State Route ———

THIS MAP COMPLIES WITH NATIONAL MAP ACCURACY STANDARDS  
FOR SALE BY U. S. GEOLOGICAL SURVEY, WASHINGTON 25, D. C.  
A FOLDER DESCRIBING TOPOGRAPHIC MAPS AND SYMBOLS IS AVAILABLE ON REQUEST

ARCADIA, OHIO  
SE 1/4 FINDLAY 15' QUADRANGLE  
N 4100-W 8330/7.5

1960  
FILE COPY  
TOPOGRAPHIC DIVISION

APR 2 5 1962

2525