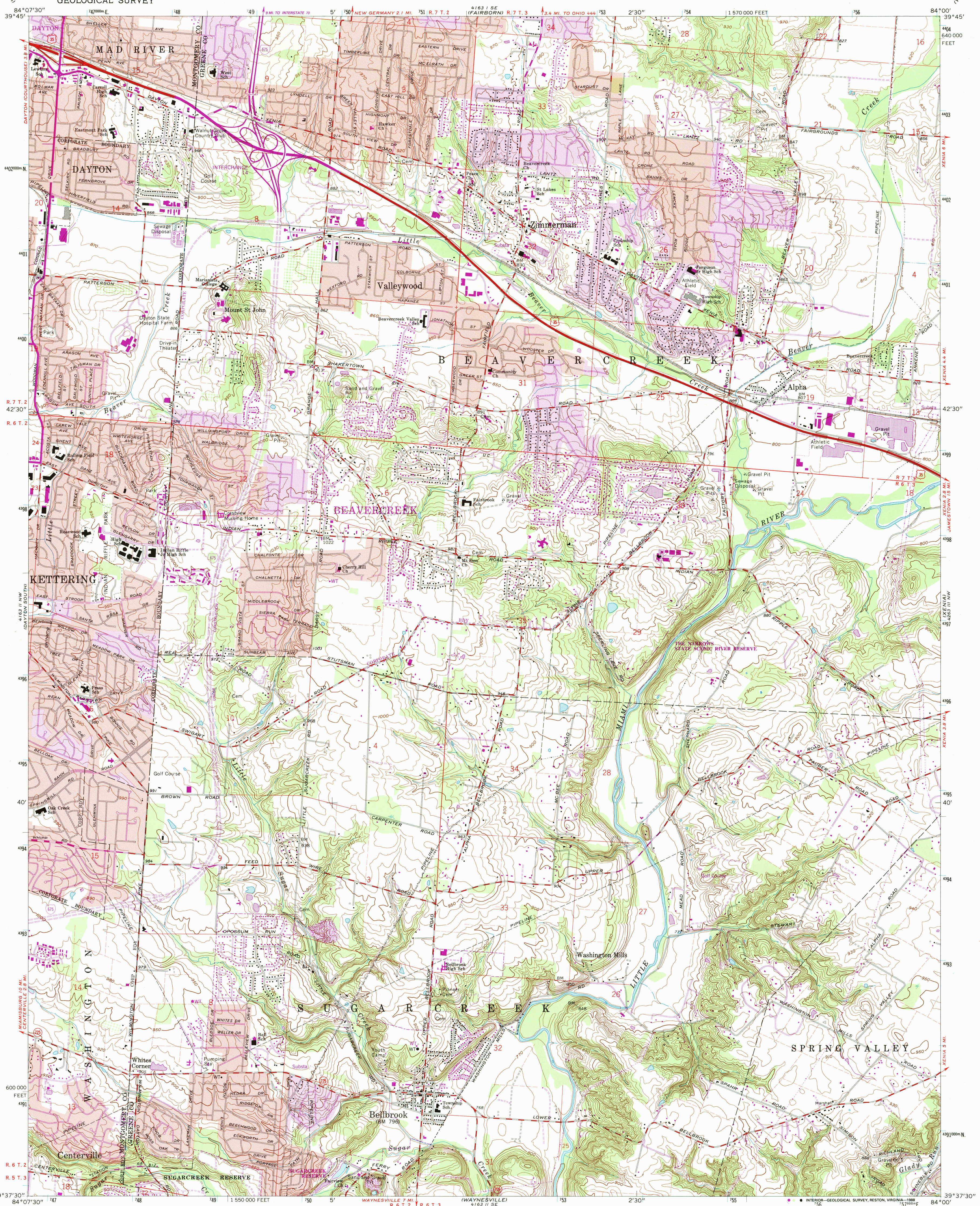


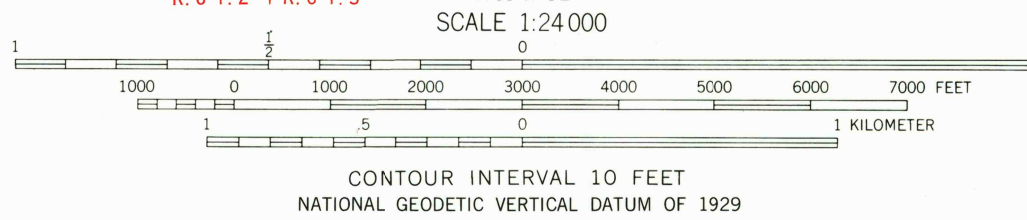
UNITED STATES  
DEPARTMENT OF THE INTERIOR  
GEOLOGICAL SURVEY

BELLBROOK QUADRANGLE  
OHIO  
7.5 MINUTE SERIES (TOPOGRAPHIC)



Mapped, edited, and published by the Geological Survey  
in cooperation with U. S. Corps of Engineers  
Revised in cooperation with State of Ohio agencies  
Control by USGS, NOS/NOAA, and USCE  
Topography by photogrammetric methods from aerial photographs  
taken 1954. Field checked 1955. Revised from aerial photographs  
taken 1964. Field checked 1965  
Polyconic projection, 10,000-foot grid ticks based on Ohio  
coordinate system, south zone 1000-meter Universal Transverse  
Mercator grid ticks, zone 16, shown in blue. 1927 North  
American Datum. To place on the predicted North American  
Datum 1983 move the projection lines 3 meters south and  
6 meters west as shown by dashed corner ticks  
Red tint indicates areas in which only landmark buildings are shown  
Area west of the Little Miami River lies within the Miami  
Land lines based on the Great Miami River Base  
Area east of the Little Miami River lies within the Virginia Military District  
There may be private inholdings within the boundaries of  
the National or State reservations shown on this map  
Purple tint indicates extension of urban areas

UTM GRID AND 1987 MAGNETIC NORTH  
DECLINATION AT CENTER OF SHEET



THIS MAP COMPLIES WITH NATIONAL MAP ACCURACY STANDARDS  
FOR SALE BY U. S. GEOLOGICAL SURVEY  
DENVER, COLORADO 80225 OR RESTON, VIRGINIA 22092  
A FOLDER DESCRIBING TOPOGRAPHIC MAPS AND SYMBOLS IS AVAILABLE ON REQUEST



ROAD CLASSIFICATION  
Primary highway, hard surface  
Secondary highway, hard surface  
Light-duty road, hard or improved surface  
Unimproved road  
Interstate Route  
U. S. Route  
State Route

BELLBROOK, OHIO  
39084-F1-TF-024  
1965  
PHOTOREVISED 1987  
DMA 4163 11 NE-SERIES Y852

AUG 1992