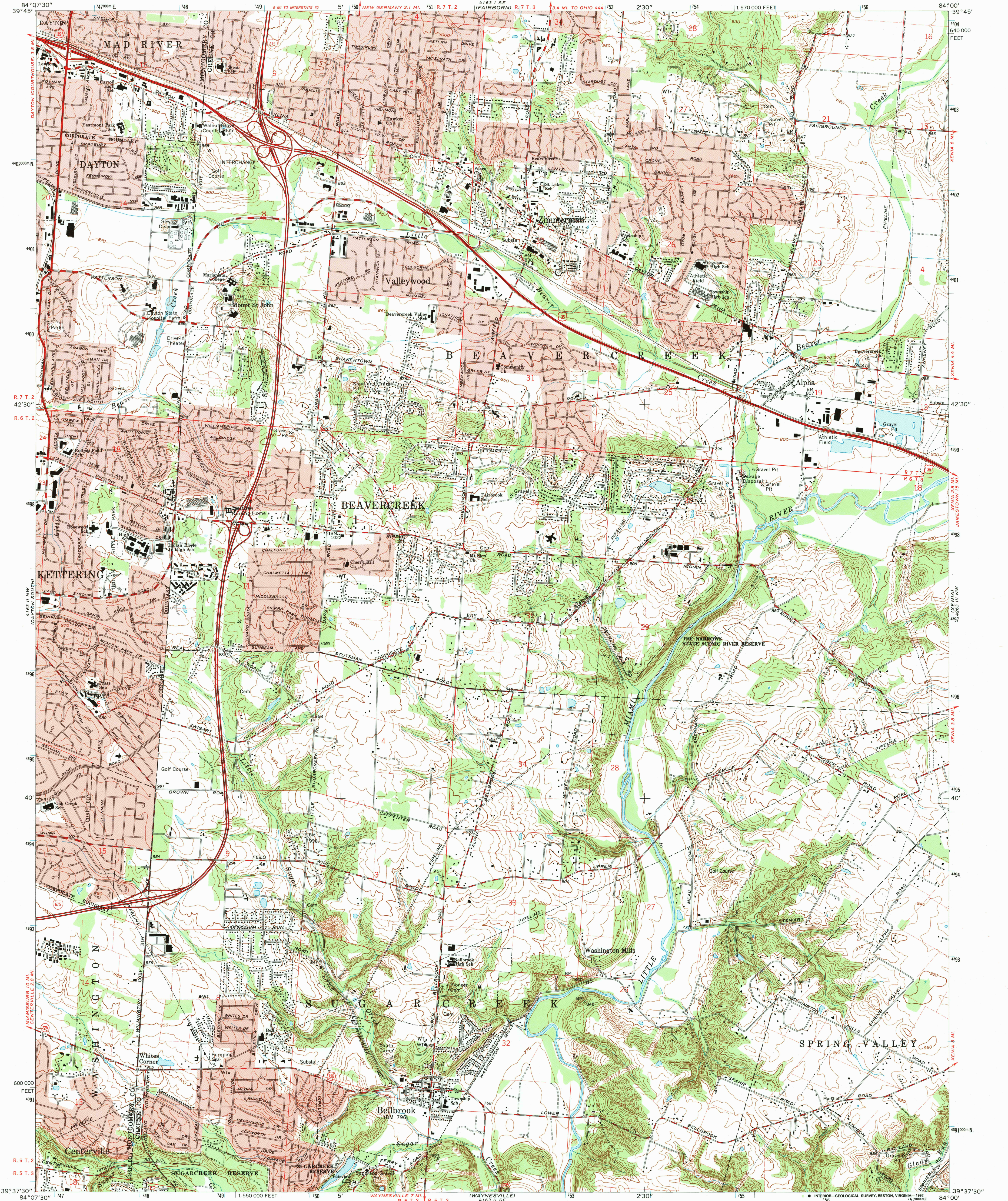
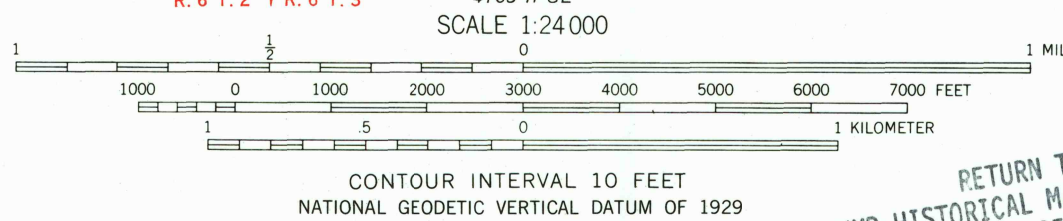
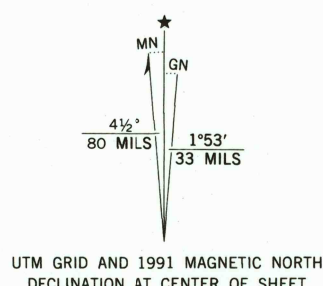


UNITED STATES
DEPARTMENT OF THE INTERIOR
GEOLOGICAL SURVEY

BELLBROOK QUADRANGLE
OHIO
7.5 MINUTE SERIES (TOPOGRAPHIC)



Mapped, edited, and published by the Geological Survey in cooperation with U. S. Corps of Engineers. Revised in cooperation with State of Ohio agencies. Control by USGS, NOS/NOAA, and USACE. Topography by photogrammetric methods from aerial photographs taken 1954. Field checked 1955. Revised from aerial photographs taken 1964. Field checked 1965. Polyconic projection. 10,000-foot grid ticks based on Ohio coordinate system, south zone. 1000-meter Universal Transverse Mercator grid ticks, zone 16, shown in blue. 1927 North American Datum. The difference between 1927 North American Datum and North American Datum of 1983 (NAD 83) for 7.5-minute intersections is given in USGS Bulletin 1875. The NAD 83 is shown by dashed corner ticks. Red tint indicates areas in which only landmark buildings are shown. Area west of the Little Miami River lies within the Between the Miamis Land lines based on the Great Miami River Base. Area east of the Little Miami River lies within the Virginia Military District. There may be private inholdings within the boundaries of the National or State reservations shown on this map.



THIS MAP COMPLIES WITH NATIONAL MAP ACCURACY STANDARDS
FOR SALE BY U. S. GEOLOGICAL SURVEY
DENVER, COLORADO 80225 OR RESTON, VIRGINIA 22092
A FOLDER DESCRIBING TOPOGRAPHIC MAPS AND SYMBOLS IS AVAILABLE ON REQUEST

RETURN TO:
NHD HISTORICAL MAP ARCHIVES
USGS NATIONAL CENTER, MS-522
RESTON, VA 22092



Revisions compiled in cooperation with State of Ohio agencies from aerial photographs taken 1988 and other sources. Contours not revised. This information not field checked. Map edited 1991.

ROAD CLASSIFICATION	
Primary highway, hard surface	Light-duty road hard or improved surface
Secondary highway, hard surface	Unimproved road
Interstate Route	U. S. Route
	State Route

BELLBROOK, OHIO
39084-F1-TF-024

1965
REVISED 1991
DMA 4163 II NE-SERIES V852