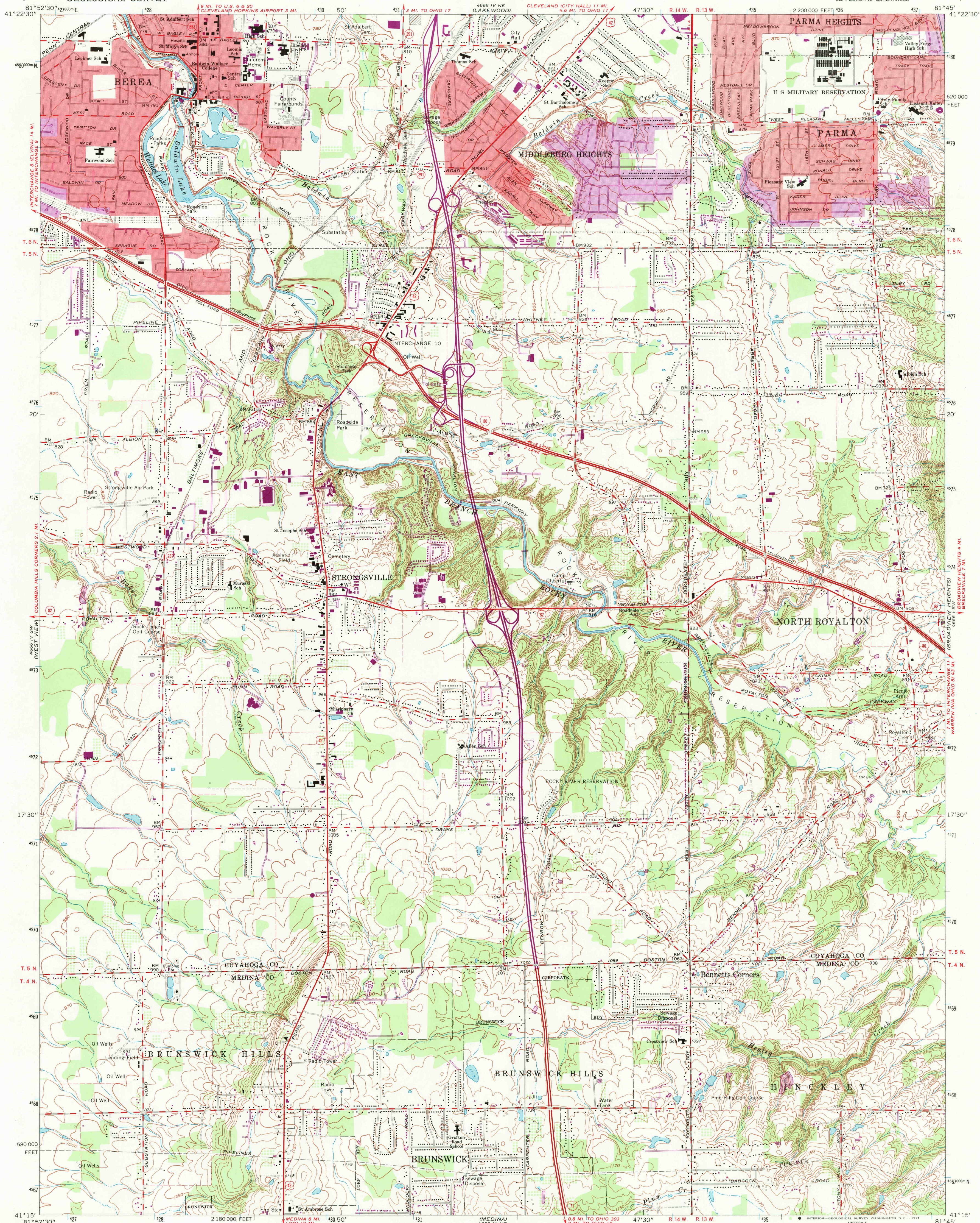
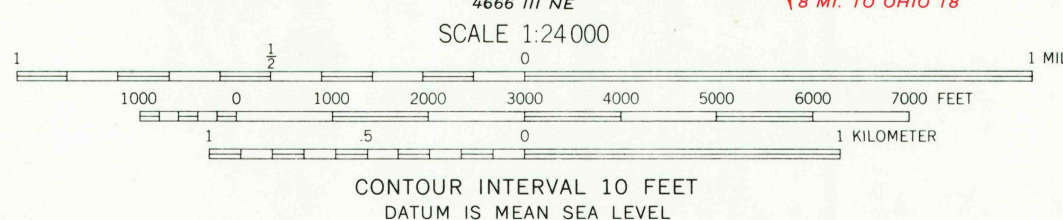


UNITED STATES
DEPARTMENT OF THE INTERIOR
GEOLOGICAL SURVEY

BEREA QUADRANGLE
OHIO
7.5 MINUTE SERIES (TOPOGRAPHIC)
SE/4 BERA 15' QUADRANGLE



Mapped, edited, and published by the Geological Survey
Revised in cooperation with State of Ohio agencies
Control by USGS, USC&GS, and Cleveland Regional Geodetic Survey
Topography by photogrammetric methods from aerial photographs
taken 1952 and planetable surveys 1953. Revised from aerial
photographs taken 1962. Field checked 1963
Polyconic projection. 1927 North American datum
10,000-foot grid based on Ohio coordinate system, north zone
1000-meter Universal Transverse Mercator grid ticks,
zone 17, shown in blue
Fine red dashed lines indicate selected fence and field lines where
generally visible on aerial photographs. This information is unchecked
Red tint indicates areas in which only landmark buildings are shown
Entire area lies within the Connecticut Western Reserve.
Dotted land lines established by private subdivision of the
Connecticut Western Reserve



THIS MAP COMPLIES WITH NATIONAL MAP ACCURACY STANDARDS
FOR SALE BY U. S. GEOLOGICAL SURVEY, WASHINGTON, D. C. 20242
A FOLDER DESCRIBING TOPOGRAPHIC MAPS AND SYMBOLS IS AVAILABLE ON REQUEST

Revisions shown in purple compiled by
State of Ohio agencies from aerial photographs taken
1970. This information not field checked
Purple tint indicates extension of urban areas

USGS
Historical File
Topographic Division



U.S.G.S.
FILE COPY
TOPOGRAPHIC DIVISION

ROAD CLASSIFICATION
Heavy duty ——— Light duty ———
Medium-duty ——— Unimproved dirt ———
Interstate Route U.S. Route State Route

BEREA, OHIO
SE/4 BERA 15' QUADRANGLE
N4115-W8145/7.5
1963
PHOTOREVISED 1970
AMS 4666 IV SE-SERIES V852

JUN 14 1971