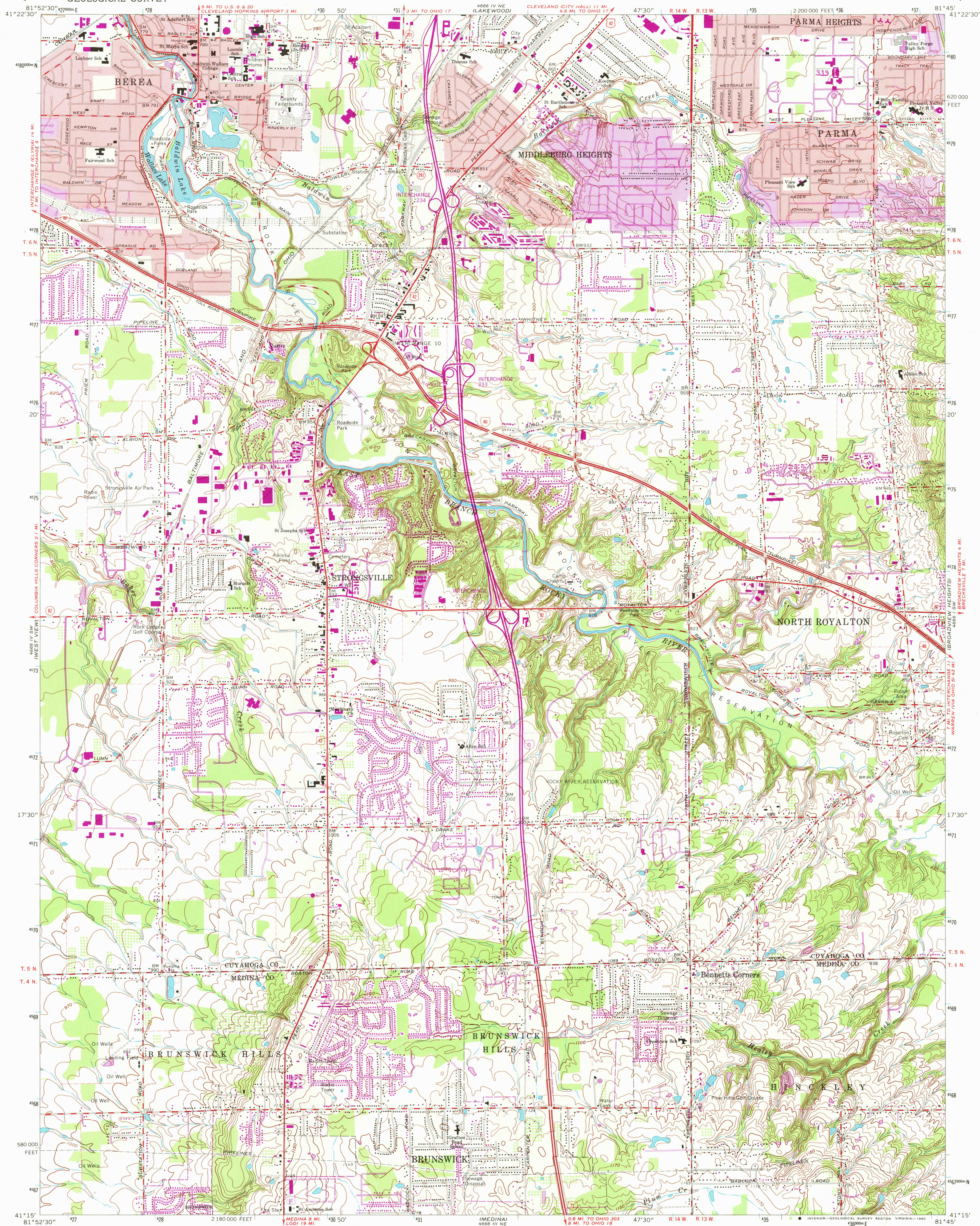


UNITED STATES
DEPARTMENT OF THE INTERIOR
GEOLOGICAL SURVEY

BEREA QUADRANGLE
OHIO
7.5 MINUTE SERIES (TOPOGRAPHIC)



Mapped, edited, and published by the Geological Survey
Revised in cooperation with State of Ohio agencies
Control by USGS, USC&GS, and Cleveland Regional Geodetic Survey
Topography by photogrammetric methods from aerial photographs
taken 1952 and planimetric surveys 1953. Revised from aerial
photographs taken 1962. Field checked 1963
Polyconic projection. 1927 North American datum
10,000-foot grid based on Ohio coordinate system, north zone
1000-meter Universal Transverse Mercator grid ticks,
zone 17, shown in blue
Fine red dashed lines indicate selected fence and field lines where
generally visible on aerial photographs. This information is unchecked
Red tint indicates areas in which only landmark buildings are shown
There may be private inholdings within the boundaries of
the National or State reservations shown on this map

ENTIRE AREA LIES WITHIN THE CONNECTICUT WESTERN RESERVE.
DOTTED LAND LINES ESTABLISHED BY PRIVATE SUBDIVISION OF THE
CONNECTICUT WESTERN RESERVE

THIS MAP COMPLIES WITH NATIONAL MAP ACCURACY STANDARDS
FOR SALE BY U.S. GEOLOGICAL SURVEY RESTON, VIRGINIA 22092
A FOLDER DESCRIBING TOPOGRAPHIC MAPS AND SYMBOLS IS AVAILABLE ON REQUEST

Revisions shown in purple compiled in cooperation with
State of Ohio agencies from aerial photographs taken
1977. This information not field checked. Map edited 1979
Purple tint indicates extension of urban areas
Boundary lines shown in purple compiled from latest
information available from the controlling authority

ROAD CLASSIFICATION
Heavy-duty ——— Light-duty ———
Medium-duty ——— Unimproved dirt ———
Interstate Route ——— U.S. Route ——— State Route ———
Historical File
Topographic Division
BEREA, OHIO
N4115—W8145/7.5
1963
PHOTOREVISED 1979
AMS 4666 IV SE—SERIES V852

MAY 20 1980

1600