

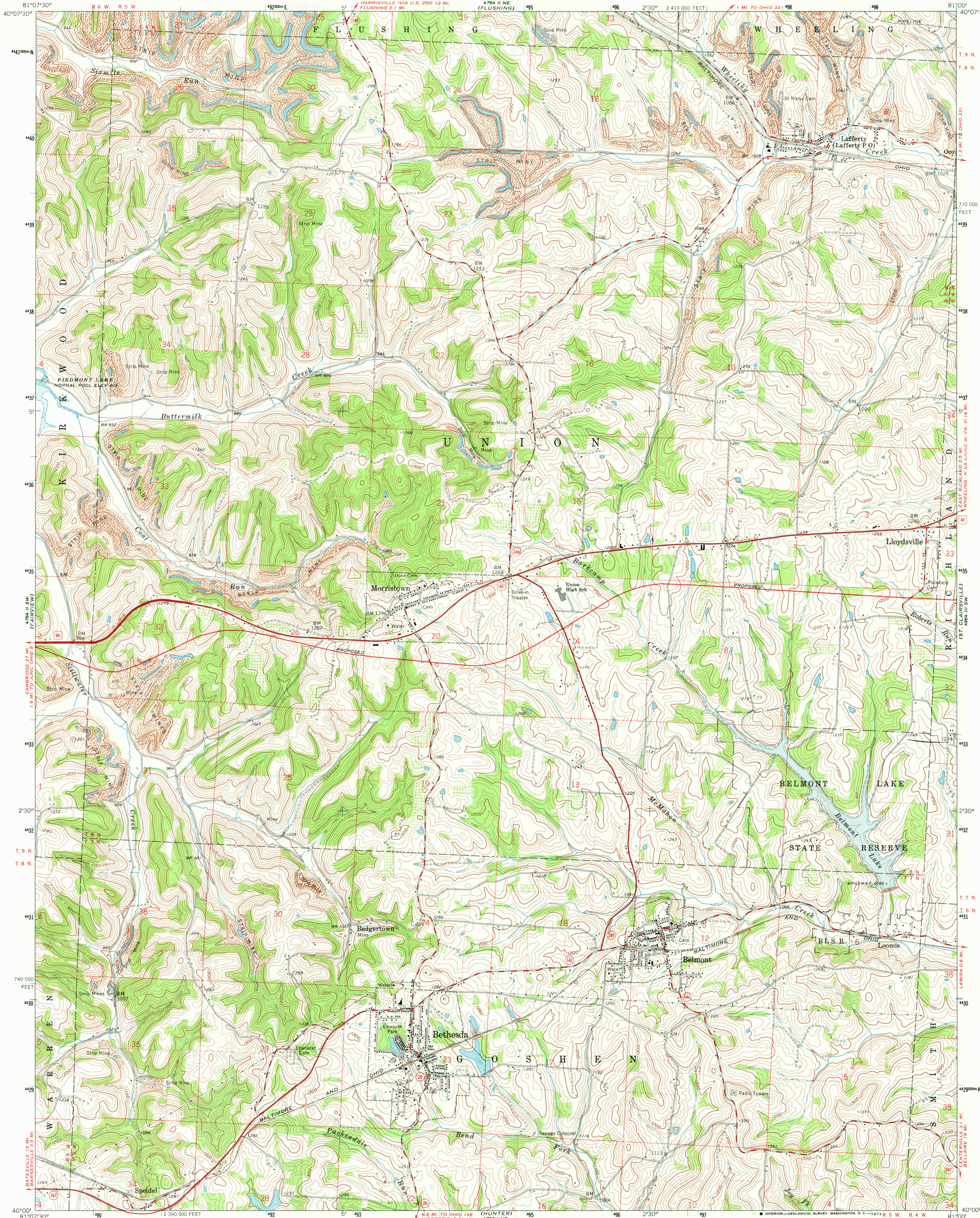
51° 07' 30" N
40° 07' 30" W
(Piedmont)

UNITED STATES
DEPARTMENT OF THE INTERIOR
GEOLOGICAL SURVEY

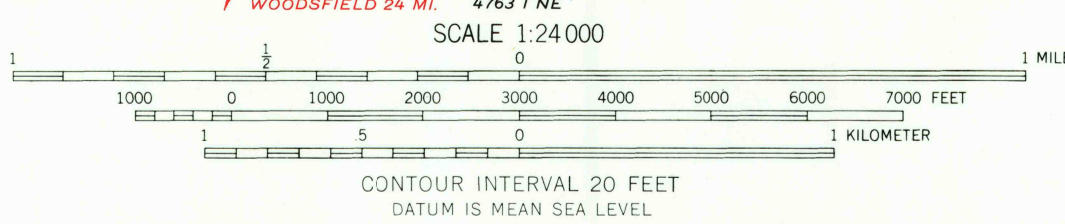
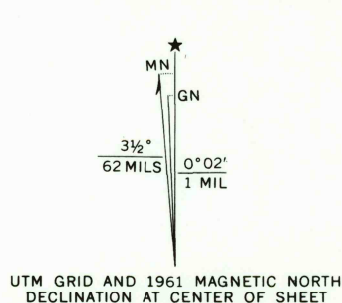
STATE OF OHIO
DEPARTMENT OF HIGHWAYS
DEPARTMENT OF NATURAL RESOURCES
DIVISION OF GEOLOGICAL SURVEY

BETHESDA QUADRANGLE
OHIO-BELMONT CO.
7.5 MINUTE SERIES (TOPOGRAPHIC)

51° 07' 30" N
40° 07' 30" W
(Harrisville)



Mapped, edited, and published by the Geological Survey
Control by USGS and USC&GS
Topography by photogrammetric methods from aerial photographs taken 1950 and 1960. Field checked 1961
Polyconic projection, 1927 North American datum
10,000-foot grid based on Ohio coordinate system, south zone
1000-meter Universal Transverse Mercator grid ticks, zone 17, shown in blue
Entire area lies within the Old Seven Ranges
Land lines based on the Ohio River Base
Area covered by dashed light-blue pattern is subject to controlled inundation to 925 feet
Blue hatching indicates area to be submerged by Belmont Lake
Fine red dashed lines indicate selected fence and field lines where generally visible on aerial photographs. This information is unchecked



ROAD CLASSIFICATION
Heavy-duty ——— Light-duty ———
Medium-duty ——— Unimproved dirt ———
U.S. Route ——— State Route ———

THIS MAP COMPLIES WITH NATIONAL MAP ACCURACY STANDARDS
FOR SALE BY U.S. GEOLOGICAL SURVEY, WASHINGTON, D.C. 20242
A FOLDER DESCRIBING TOPOGRAPHIC MAPS AND SYMBOLS IS AVAILABLE ON REQUEST

BETHESDA, OHIO
N 4000-W 8100/7.5
1961
AMS 4764 II SE-SERIES V852

51° 07' 30" N
40° 07' 30" W
(Harrisville)