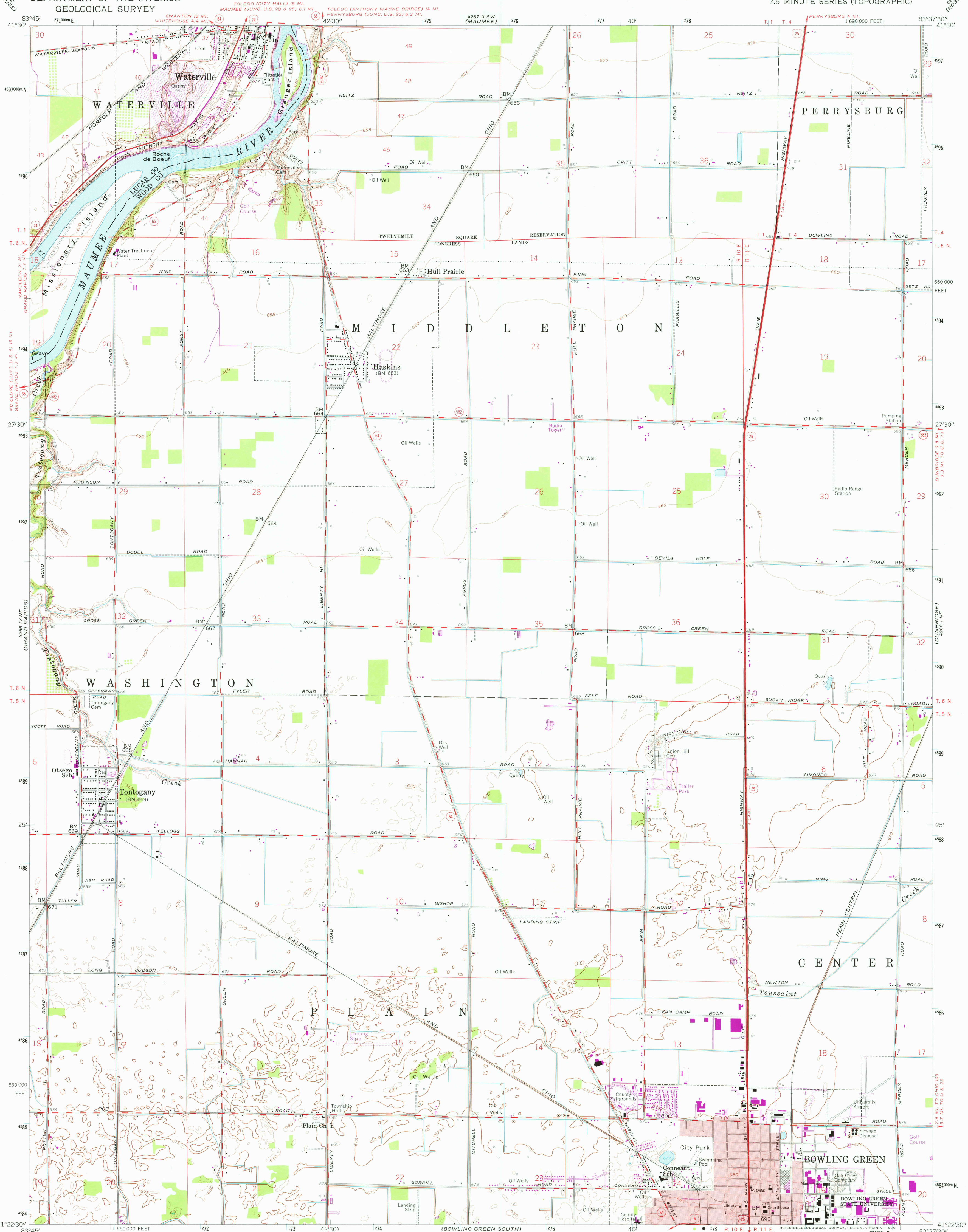


UNITED STATES
DEPARTMENT OF THE INTERIOR
GEOLOGICAL SURVEY

BOWLING GREEN NORTH QUADRANGLE
OHIO
7.5 MINUTE SERIES (TOPOGRAPHIC)



Mapped, edited, and published by the Geological Survey

Control by USGS and USC&GS

Culture and drainage in Wood County from controlled aerial

photo mosaic. Aerial photographs taken 1951

Topography by planetable surveys 1958

Lucas County portion by planetable surveys 1935. Revised 1958

Polyconic projection. 1927 North American datum

10,000-foot grid based on Ohio coordinate system, north zone

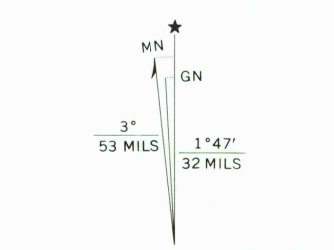
1000-meter Universal Transverse Mercator grid ticks, zone 17, shown in blue

Red tint indicates area in which only

landmark buildings are shown

Land lines within Congress Lands based on the

First Principal Meridian



SCALE 1:24,000

CONTOUR INTERVAL 5 FEET

NATIONAL GEODETIC DATUM OF 1929

THIS MAP COMPLIES WITH NATIONAL MAP ACCURACY STANDARDS
FOR SALE BY U.S. GEOLOGICAL SURVEY, RESTON, VIRGINIA 22092
A FOLDER DESCRIBING TOPOGRAPHIC MAPS AND SYMBOLS IS AVAILABLE ON REQUEST

Revisions shown in purple compiled in cooperation with
State of Ohio agencies from aerial photographs taken
1971. This information not field checked

ROAD CLASSIFICATION
Heavy-duty ——— Light-duty ———
Medium-duty ——— Unimproved dirt ———
U.S. Route ——— State Route ———

BOWLING GREEN NORTH, OHIO

N4122.5—W8337.5/7.5

1958
PHOTOREVISED 1971
AMS 4266 1 NW—SERIES V852

USGS
Historical File
Topographic Division

NOV 23 1976