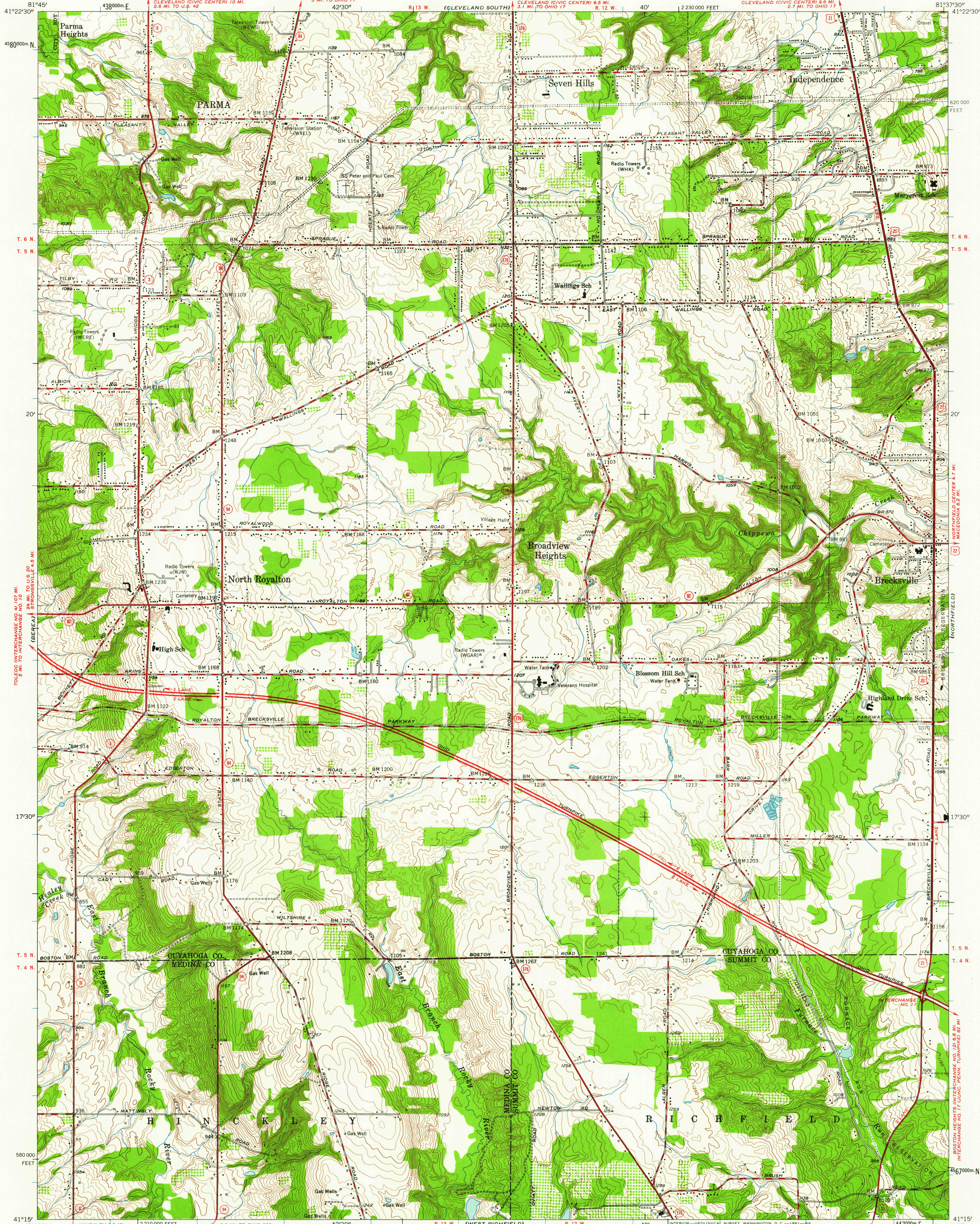


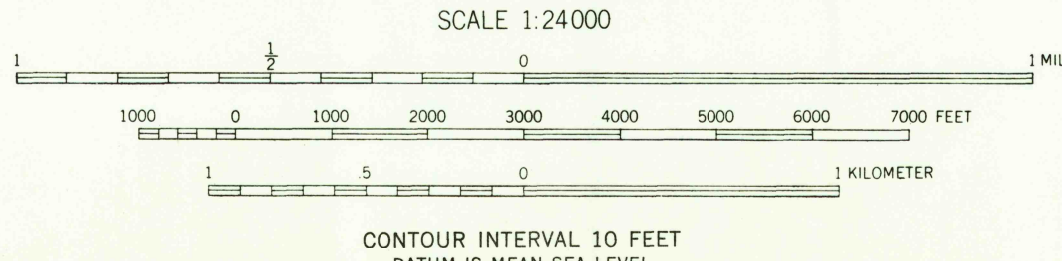
UNITED STATES
DEPARTMENT OF THE INTERIOR
GEOLOGICAL SURVEY

BROADVIEW HEIGHTS QUADRANGLE
OHIO
7.5 MINUTE SERIES (TOPOGRAPHIC)
SW 1/4 CLEVELAND 15' QUADRANGLE



Mapped, edited, and published by the Geological Survey
Control by USGS, USC&GS, and Cleveland Regional Geodetic Survey
Topography from aerial photographs by Kelsh plotter
Aerial photographs taken 1951. Field check 1953
Polyconic projection. 1927 North American datum
10,000-foot grid based on Ohio coordinate system,
north zone
Entire area lies within the Connecticut Western Reserve
Land lines were established by the Connecticut Land Company
1000-meter Universal Transverse Mercator grid ticks,
zone 17, shown in blue

APPROXIMATE MEAN
DECLINATION, 1953



ROAD CLASSIFICATION
Heavy-duty ——— Light-duty ———
Medium-duty ——— Unimproved dirt ———
U.S. Route ——— State Route ———



BROADVIEW HEIGHTS, OHIO
SW 1/4 CLEVELAND 15' QUADRANGLE
N 4115—W 8137.5/7.5

1953

THIS MAP COMPLIES WITH NATIONAL MAP ACCURACY STANDARDS
FOR SALE BY U. S. GEOLOGICAL SURVEY, WASHINGTON, 25, D. C.
A FOLDER DESCRIBING TOPOGRAPHIC MAPS AND SYMBOLS IS AVAILABLE ON REQUEST

SEP - 8 1951