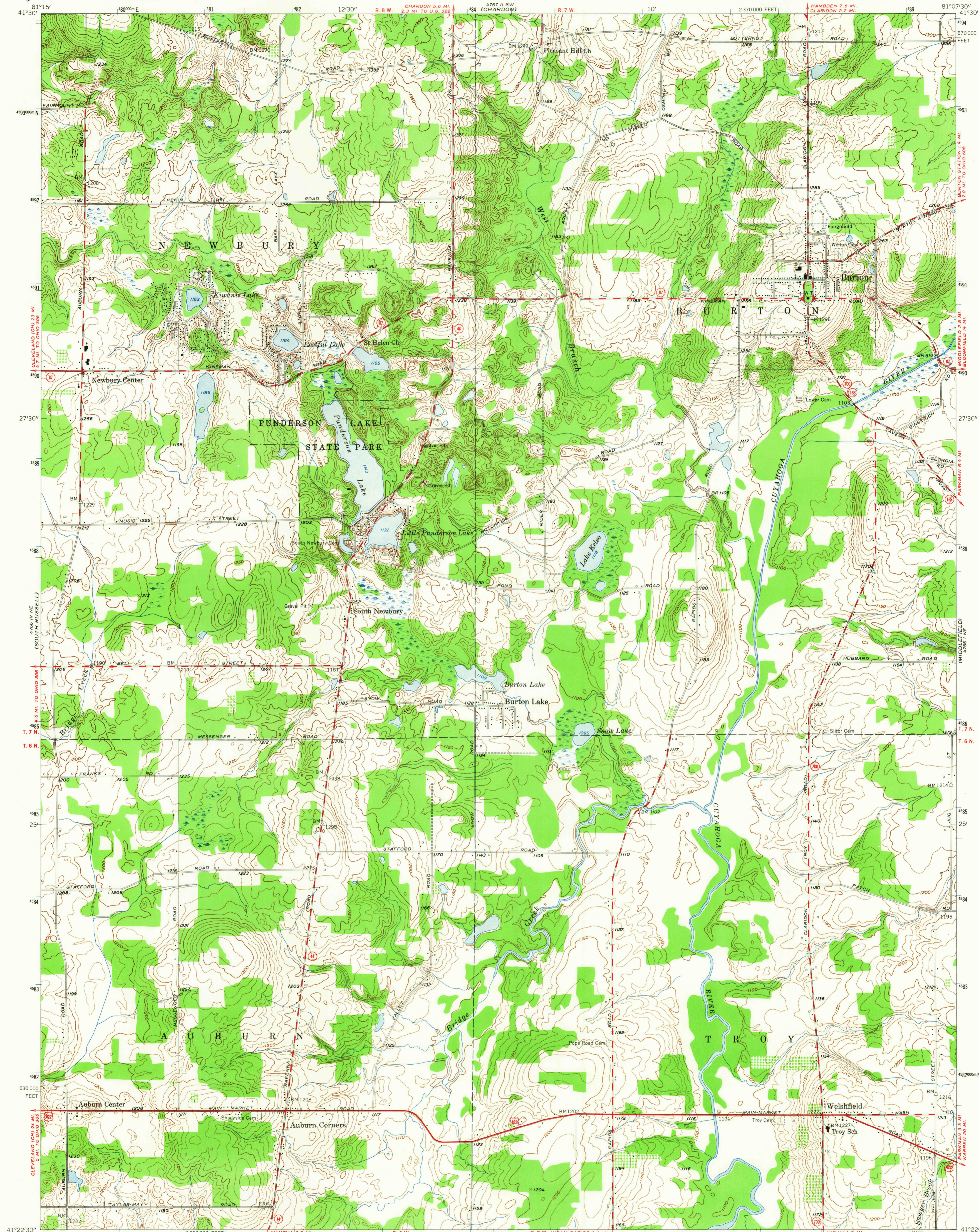
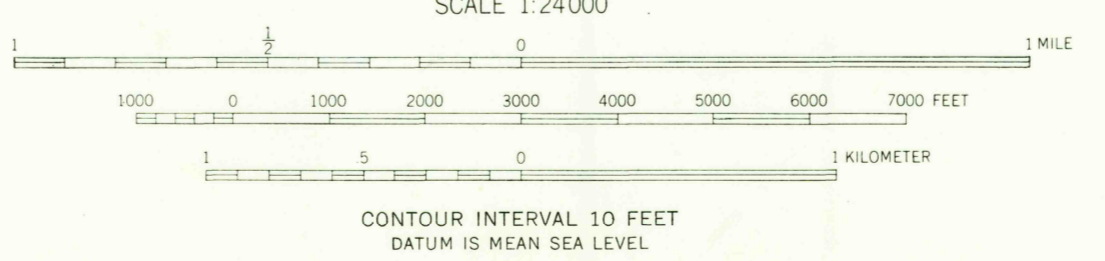
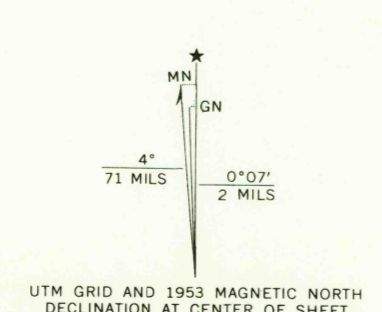


UNITED STATES  
DEPARTMENT OF THE INTERIOR  
GEOLOGICAL SURVEY

BURTON QUADRANGLE  
OHIO—GAUGA CO.  
7.5 MINUTE SERIES (TOPOGRAPHIC)  
NW/4 GARRETTSVILLE 15' QUADRANGLE



Maped, edited, and published by the Geological Survey  
Control by USGS and USC&GS  
Topography from aerial photographs by Kelsch plotter  
Aerial photographs taken 1952. Field check 1953  
Polyconic projection. 1927 North American datum  
10,000-foot grid based on Ohio coordinate system,  
north zone  
Entire area lies within the Connecticut Western Reserve  
Land lines were established by the Connecticut Land Company  
1000-meter Universal Transverse Mercator grid ticks,  
zone 17, shown in blue



USGS  
Historical File  
Topographic Division



ROAD CLASSIFICATION  
Heavy-duty — 4 LANE 18 LANE Light-duty —  
Medium-duty — 4 LANE 16 LANE Unimproved dirt —  
U.S. Route State Route

U.S.G.S.  
FILE COPY  
TOPOGRAPHIC DIVISION

BURTON, OHIO  
NW/4 GARRETTSVILLE 15' QUADRANGLE  
N4122.5-W8107.5/7.5  
1953  
AMS 4766 1 NW-SERIES V852

THIS MAP COMPLIES WITH NATIONAL MAP ACCURACY STANDARDS  
FOR SALE BY U.S. GEOLOGICAL SURVEY, WASHINGTON, D.C. 20242  
A FOLDER DESCRIBING TOPOGRAPHIC MAPS AND SYMBOLS IS AVAILABLE ON REQUEST

JUN 23 1965