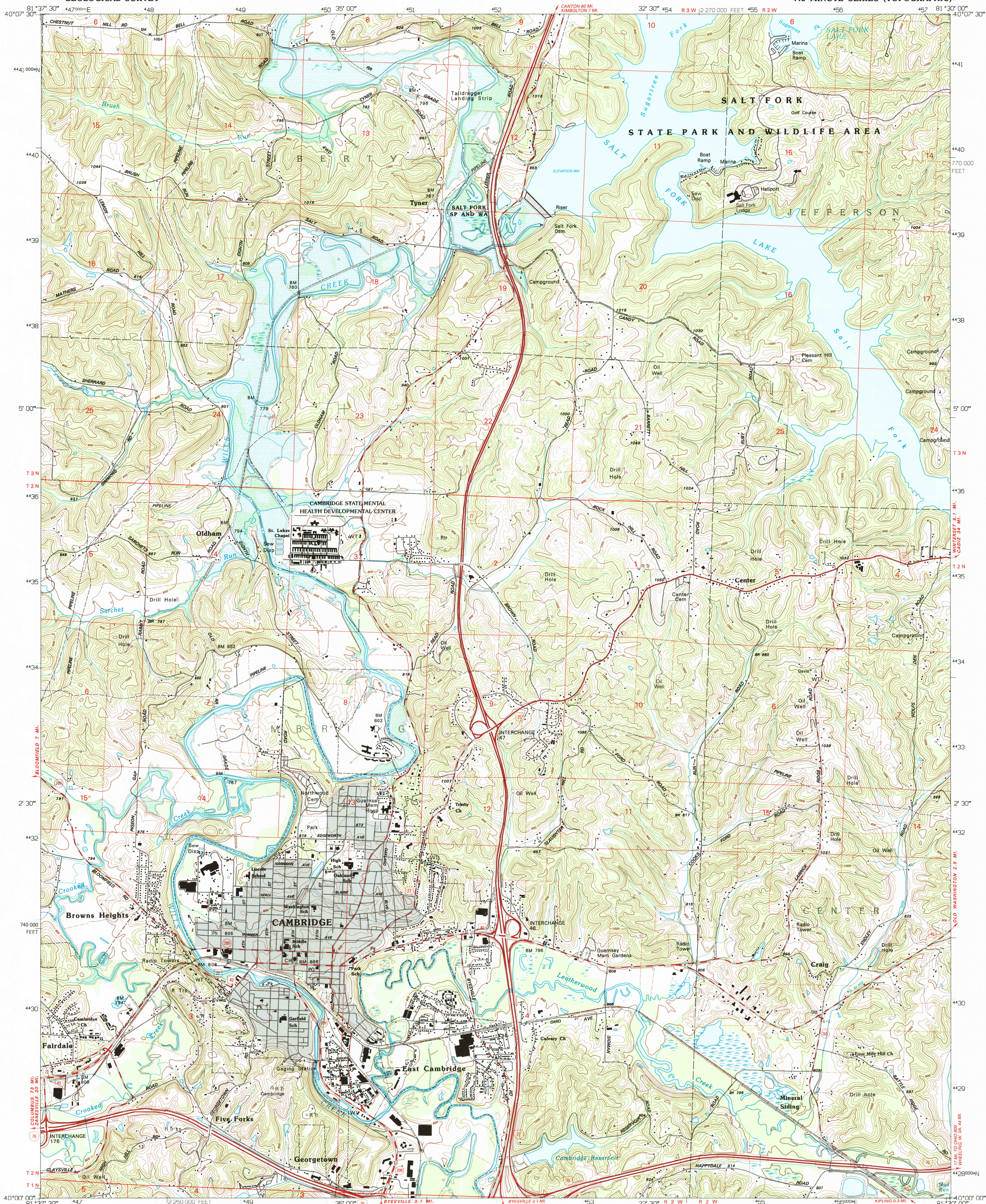
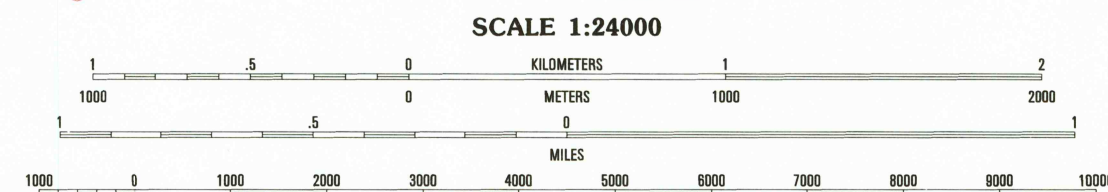
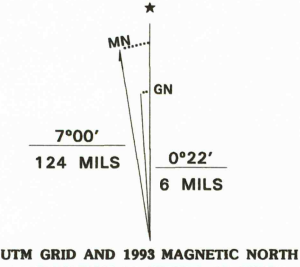


UNITED STATES
DEPARTMENT OF THE INTERIOR
GEOLOGICAL SURVEY

CAMBRIDGE QUADRANGLE
OHIO-GUERNSEY CO.
7.5 MINUTE SERIES (TOPOGRAPHIC)



Produced by the United States Geological Survey
in cooperation with State of Ohio agencies
Control by USGS and NOS/NOAA
Topography by photogrammetric methods from aerial photographs
taken 1960. Field checked 1962. Revised from aerial photographs
taken 1989. Field checked 1992. Map edited 1993
Universal Transverse Mercator projection
10,000-foot grid ticks. Ohio coordinate system, south zone
1000-meter Universal Transverse Mercator grid ticks, zone 17, shown in blue
1927 North American Datum (NAD 27)
North American Datum of 1983 (NAD 83) is shown by dashed corner ticks
The values of the shift between NAD 27 and NAD 83 for 7.5-minute
intersections are given in USGS Bulletin 1875
There may be private inholdings within the boundaries of the
National or State reservations shown on this map
Areas covered by dashed light-blue pattern
are subject to controlled inundation by Vills Creek Lake
Unlabeled wells are gas wells
Gray tint indicates areas in which only landmark buildings are shown
Land lines within the United States Military District based on the Base Line
of the United States Military District
Fine red dashed lines indicate selected fence and field lines where
generally visible on aerial photographs. This information is unchecked



THIS MAP COMPLIES WITH NATIONAL MAP ACCURACY STANDARDS
FOR SALE BY U.S. GEOLOGICAL SURVEY
DENVER, COLORADO 80225 OR RESTON, VIRGINIA 22092
A FOLDER DESCRIBING TOPOGRAPHIC MAPS AND SYMBOLS IS AVAILABLE ON REQUEST

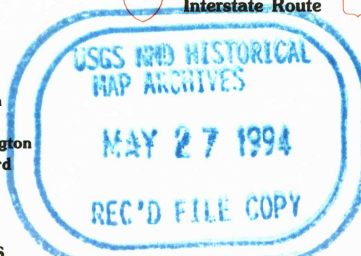


QUADRANGLE LOCATION

1	2	3	1 Plainfield
4	5	6	2 Kimbenton
7	8	9	3 Birmingham
10	11	12	4 Bloomfield
13	14	15	5 Old Washington
16	17	18	6 New Concord
19	20	21	7 Byesville
22	23	24	8 Seneca

ADJOINING 7.5' QUADRANGLE NAMES

ROAD CLASSIFICATION	ROAD CLASSIFICATION
Primary highway hard surface	Light-duty road, hard or improved surface
Secondary highway hard surface	Unimproved road
Interstate Route	US Route
State Route	



CAMBRIDGE, OHIO
40081-A5-TF-024
1993

DMA 4664 II SE-SERIES Y852