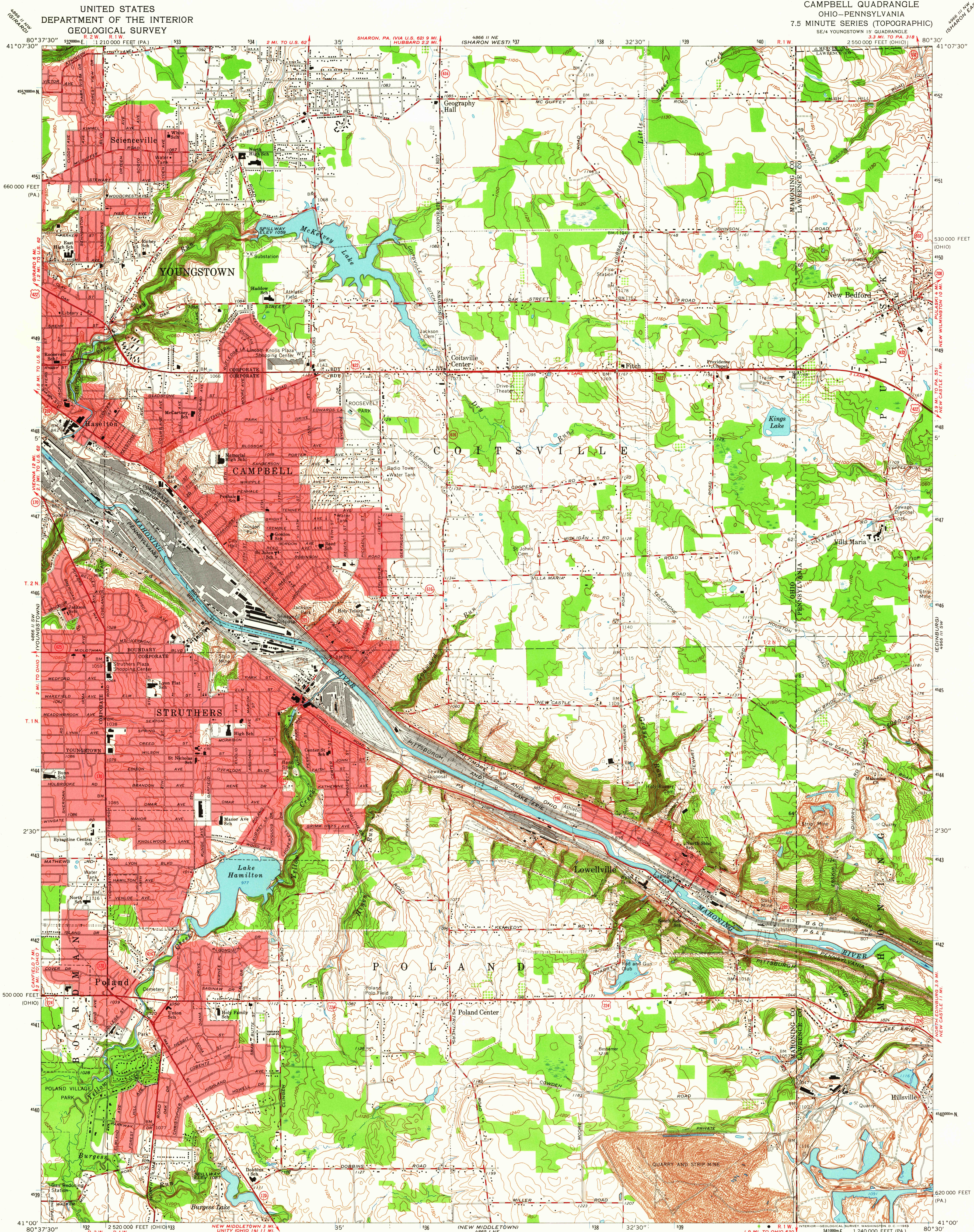
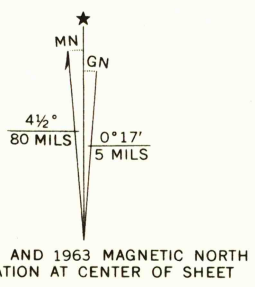


UNITED STATES
DEPARTMENT OF THE INTERIOR
GEOLOGICAL SURVEY

CAMPBELL QUADRANGLE
OHIO-PENNSYLVANIA
7.5 MINUTE SERIES (TOPOGRAPHIC)



Mapped, edited, and published by the Geological Survey
in cooperation with County of Mahoning
Revised in cooperation with State of Ohio agencies
Control by USGS, USCGS, and County of Mahoning
Topography by photogrammetric methods from aerial photographs taken
1950 and planetable surveys 1951. Revised from aerial photographs
taken 1962. Field checked 1963
Polyconic projection. 1927 North American datum
10,000-foot grids based on Ohio coordinate system, north zone,
and Pennsylvania coordinate system, south zone
1000-meter Universal Transverse Mercator grid ticks,
zone 17, shown in blue
Fine red dashed lines indicate selected fence and field lines where
generally visible on aerial photographs. This information is unchecked
Red tint indicates areas in which only landmark buildings are shown
Ohio area lies within the Connecticut Western Reserve. Land lines
established by private subdivision of the Connecticut Western Reserve



THIS MAP COMPLIES WITH NATIONAL MAP ACCURACY STANDARDS
FOR SALE BY U.S. GEOLOGICAL SURVEY, WASHINGTON 25, D. C.
A FOLDER DESCRIBING TOPOGRAPHIC MAPS AND SYMBOLS IS AVAILABLE ON REQUEST

ROAD CLASSIFICATION
Heavy-duty ——— Light-duty ———
Medium-duty ——— Unimproved dirt ———
U. S. Route ——— State Route ———



CAMPBELL, OHIO-PA.
SE/4 YOUNGSTOWN 15' QUADRANGLE
N4100-W8030/7.5

1963

AMS 4866 II SE-SERIES V852

JUL 7 1964

3595