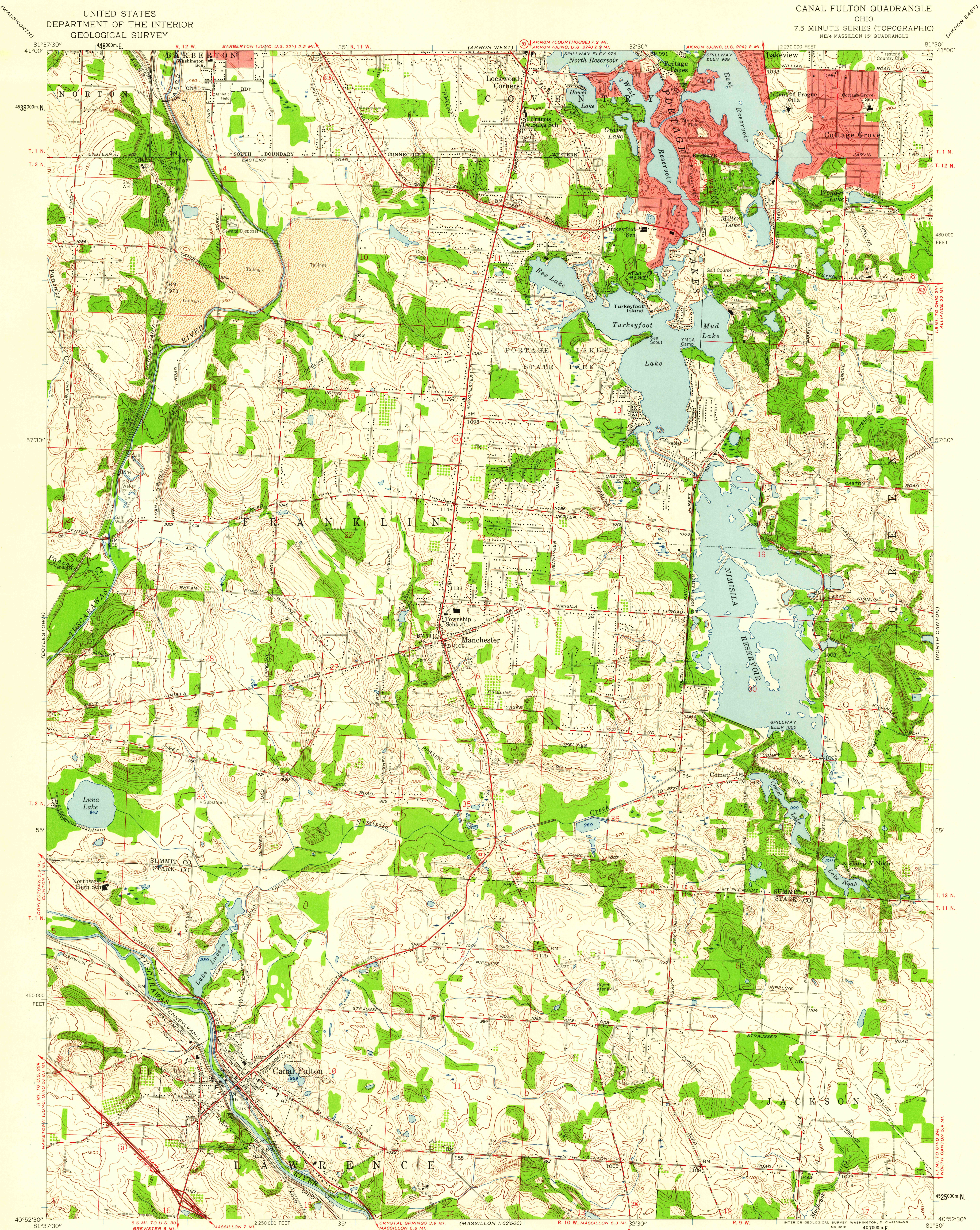


UNITED STATES
DEPARTMENT OF THE INTERIOR
GEOLOGICAL SURVEY

CANAL FULTON QUADRANGLE
OHIO
7.5 MINUTE SERIES (TOPOGRAPHIC)
NE 1/4 MASSILLON 15' QUADRANGLE



Mapped, edited, and published by the Geological Survey
in cooperation with Summit County Commissioners
Control by USGS and USC&GS
Topography from aerial photographs by photogrammetric methods
Aerial photographs taken 1957. Field check 1958
Polyconic projection. 1927 North American datum
10,000-foot grid based on Ohio coordinate system, north zone
1000-meter Universal Transverse Mercator grid ticks,
zone 17, shown in blue
Red tint indicates areas in which only landmark buildings are shown
Unlabeled wells are gas wells
Area within R. 10 W.-T. 1 N. and T. 2 N. based on the Muskingum River Base
Area within R. 9 W.-T. 11 N. and T. 12 N. based on the Ohio River Base
Dotted land line established by the Connecticut Land Company

APPROXIMATE MEAN
DECLINATION, 1958

THIS MAP COMPLIES WITH NATIONAL MAP ACCURACY STANDARDS
FOR SALE BY U. S. GEOLOGICAL SURVEY, WASHINGTON 25, D. C.
A FOLDER DESCRIBING TOPOGRAPHIC MAPS AND SYMBOLS IS AVAILABLE ON REQUEST

ROAD CLASSIFICATION
Heavy-duty ——— Light-duty ———
Medium-duty ——— Unimproved dirt ———
U. S. Route ——— State Route ———

CANAL FULTON, OHIO
NE 1/4 MASSILLON 15' QUADRANGLE
N4052.5-W8130.7.5

1958

U.S.G.S.
FILE COPY
TOPOGRAPHIC DIVISION

SEP 10 1959