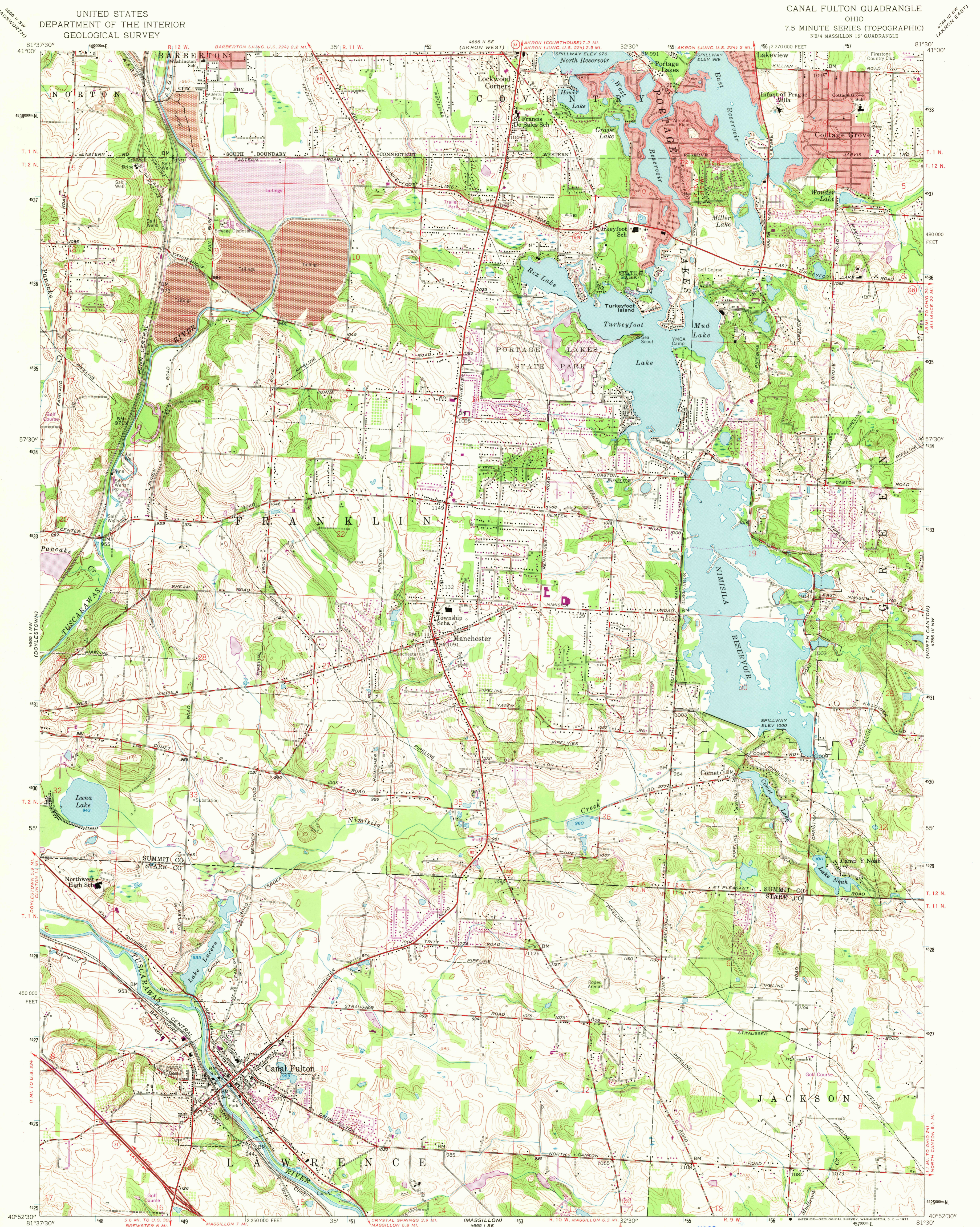


UNITED STATES  
DEPARTMENT OF THE INTERIOR  
GEOLOGICAL SURVEY

CANAL FULTON QUADRANGLE  
OHIO  
7.5 MINUTE SERIES (TOPOGRAPHIC)  
NE 1/4 MASSILLON 15' QUADRANGLE



Maped, edited, and published by the Geological Survey  
in cooperation with Summit County Commissioners

Control by USGS and USC&GS

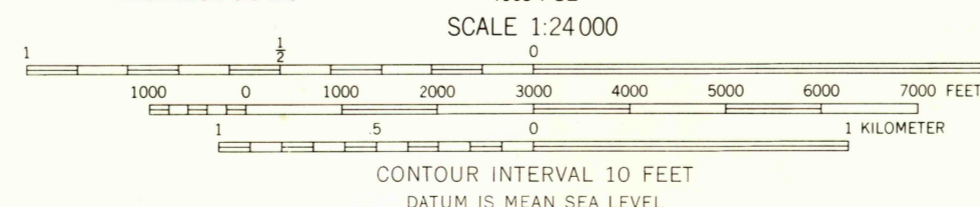
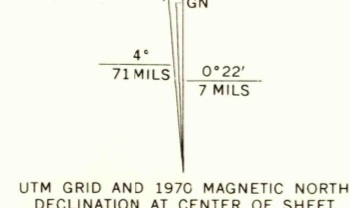
Topography from aerial photographs by photogrammetric methods  
Aerial photographs taken 1957. Field check 1958

Polyconic projection. 1927 North American datum  
10,000-foot grid based on Ohio coordinate system, north zone  
1000-meter Universal Transverse Mercator grid ticks,  
zone 17, shown in blue

Red tint indicates areas in which only landmark buildings are shown

Unlabeled wells are gas wells

Area within R. 10 W.-T. 11 N. and T. 2 N. based on the Muskingum River Base  
Area within R. 9 W.-T. 11 N. and T. 12 N. based on the Ohio River Base  
Dotted land line established by the Connecticut Land Company



USGS  
Historical File  
Topographic Division



U.S.G.S.  
FILE COPY  
TOPOGRAPHIC DIVISION

CANAL FULTON, OHIO  
NE 1/4 MASSILLON 15' QUADRANGLE  
N 4052.5 - W 8130.7.5  
1958  
PHOTOREVISED 1970  
AMS 4665 1 NE-SERIES V852

THIS MAP COMPLIES WITH NATIONAL MAP ACCURACY STANDARDS  
FOR SALE BY U.S. GEOLOGICAL SURVEY, WASHINGTON, D.C. 20242  
A FOLDER DESCRIBING TOPOGRAPHIC MAPS AND SYMBOLS IS AVAILABLE ON REQUEST

Revision shown in purple compared to cooperation with  
State of Ohio agencies from a  
This information not field checked

4465  
JAN 11 1971