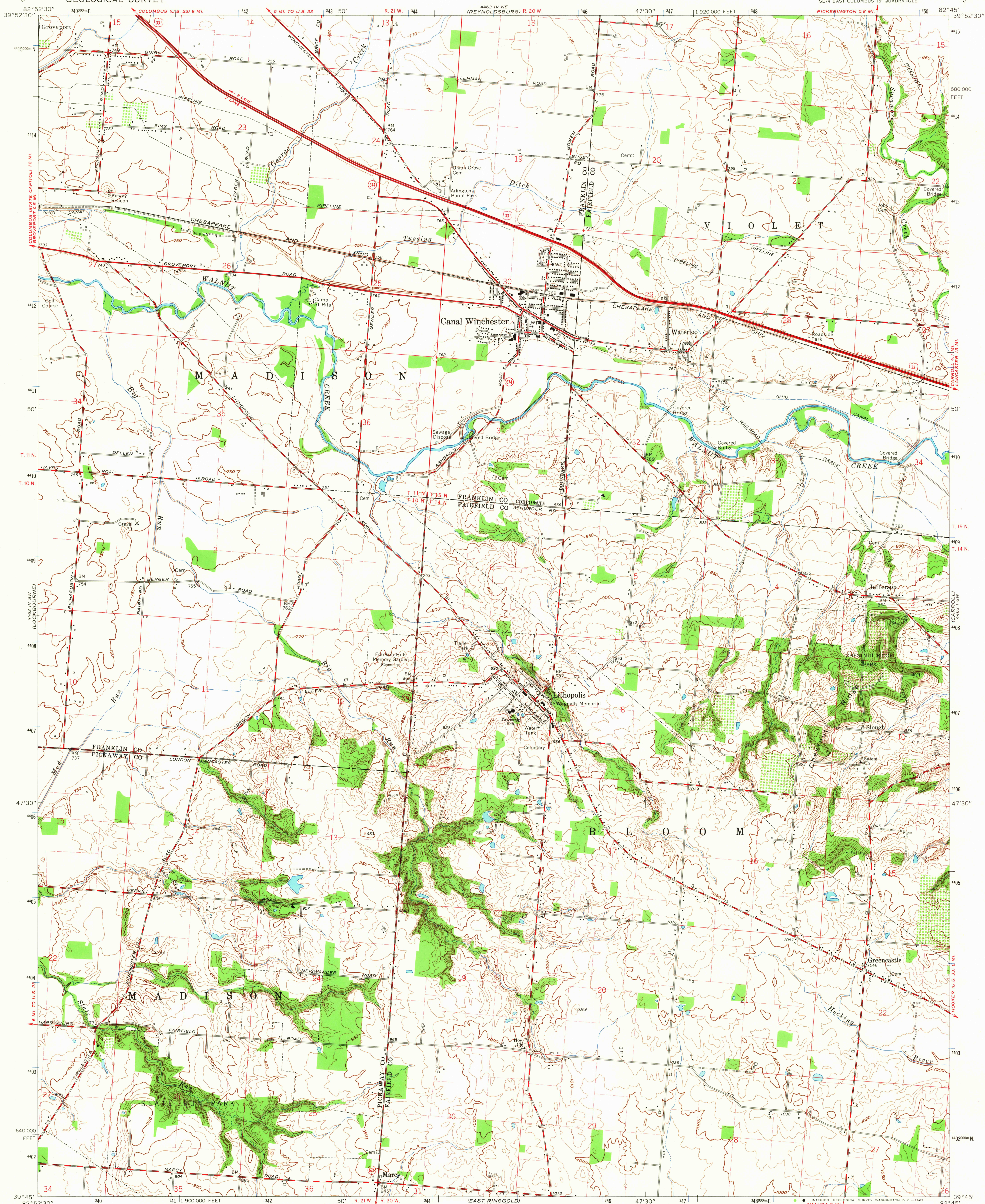


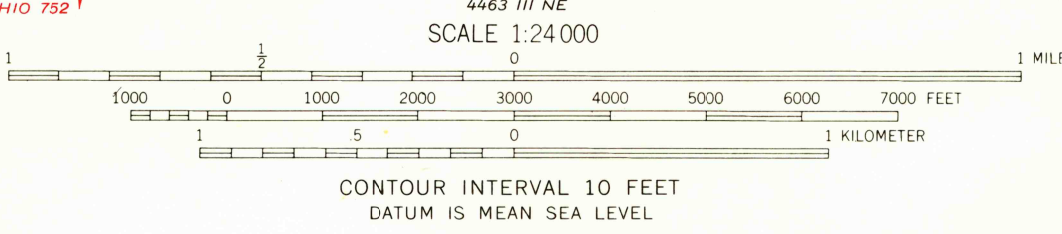
UNITED STATES  
DEPARTMENT OF THE INTERIOR  
GEOLOGICAL SURVEY

CANAL WINCHESTER QUADRANGLE  
OHIO  
7.5 MINUTE SERIES (TOPOGRAPHIC)  
SE/4 EAST COLUMBUS 15' QUADRANGLE



Mapped, edited, and published by the Geological Survey  
Revised in cooperation with State of Ohio agencies  
Control by USGS, USCGS, and Franklin County  
Topography by photogrammetric methods from aerial photographs  
taken 1953. Field checked 1955. Revised 1966.  
Polyconic projection. 1927 North American datum.  
10,000-foot grid based on Ohio coordinate system, south zone  
1000-meter Universal Transverse Mercator grid ticks,  
zone 17, shown in blue.  
Fine red dashed lines indicate selected fence and field lines where  
generally visible on aerial photographs. This information is unchecked.  
Entire area lies within Congress Lands east of the Scioto River.  
Land lines based on the Ohio River Base.

UTM GRID AND 1966 MAGNETIC NORTH  
DECLINATION AT CENTER OF SHEET



THIS MAP COMPLIES WITH NATIONAL MAP ACCURACY STANDARDS  
FOR SALE BY U.S. GEOLOGICAL SURVEY, WASHINGTON, D.C. 20242  
A FOLDER DESCRIBING TOPOGRAPHIC MAPS AND SYMBOLS IS AVAILABLE ON REQUEST

USGS  
Historical File  
Topographic Division



U.S.G.S.  
TOPOGRAPHIC DIVISION

CANAL WINCHESTER, OHIO  
SE/4 EAST COLUMBUS 15' QUADRANGLE  
N 3945-W 8245/7.5  
1966  
AMS 4463 IV SE-SERIES V852

ROAD CLASSIFICATION  
Heavy-duty ——— Light-duty ———  
Medium-duty ——— Unimproved dirt ———  
U.S. Route ——— State Route ———

3670  
AUG 7 1967