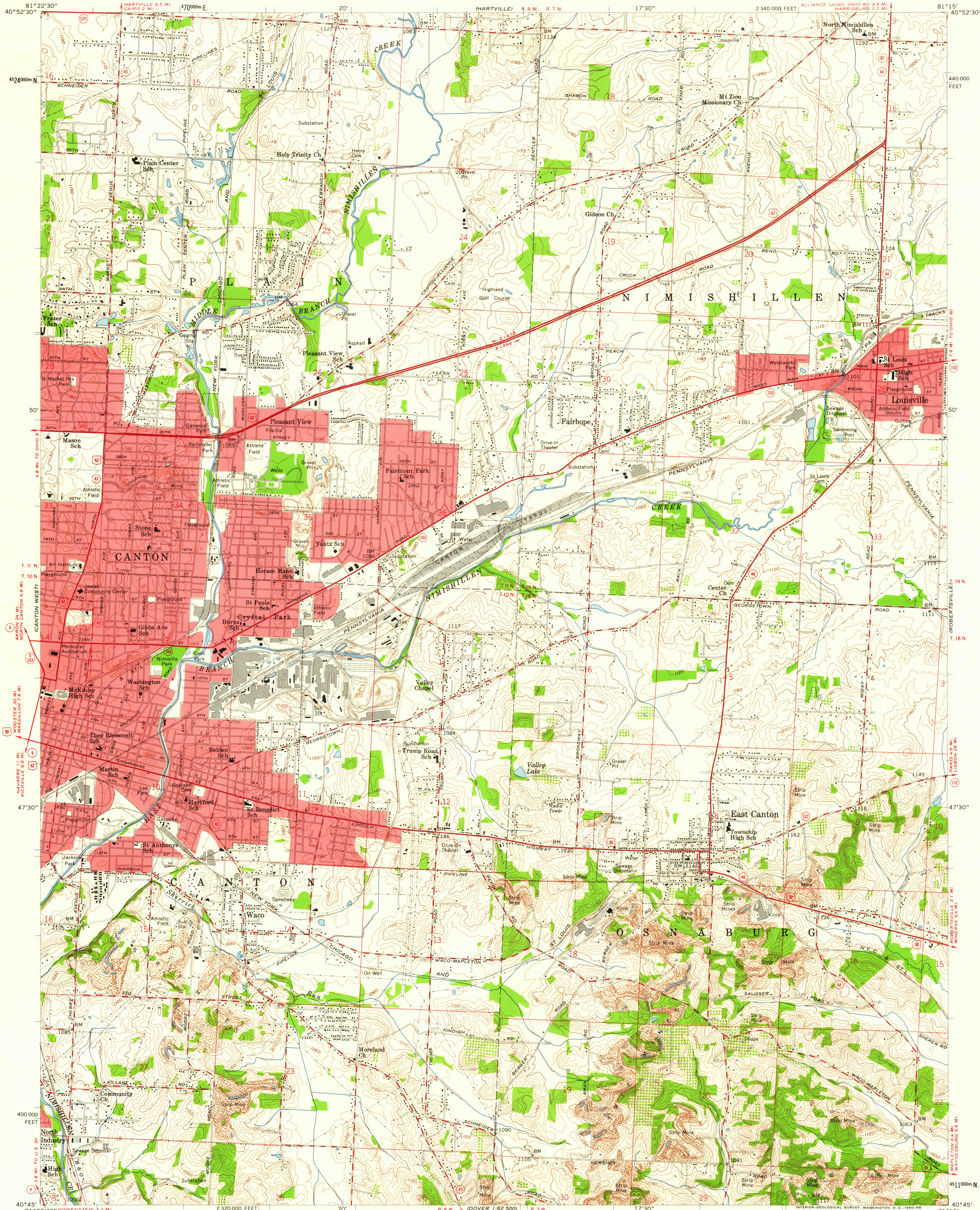


UNITED STATES
DEPARTMENT OF THE INTERIOR
GEOLOGICAL SURVEY

CANTON EAST QUADRANGLE
OHIO—STARK CO.
7.5 MINUTE SERIES (TOPOGRAPHIC)



Mapped, edited, and published by the Geological Survey
Control by USGS and USC&GS

Topography from aerial photographs by photogrammetric methods
Aerial photographs taken 1957. Field check 1958

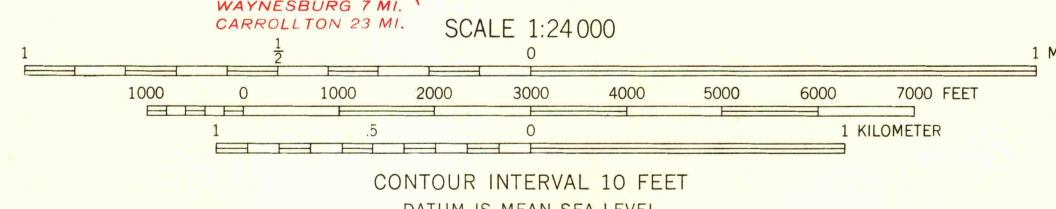
Polyconic projection. 1927 North American datum
10,000-foot grid based on Ohio coordinate system, north zone
1000-meter Universal Transverse Mercator grid ticks,
zone 17, shown in blue

Red tint indicates areas in which only
landmark buildings are shown

Unlabeled wells are gas wells

Land lines based on the Ohio River Base

Unchecked elevations are shown in brown



USGS
Historical File
Topographic Division



ROAD CLASSIFICATION
Heavy-duty ——— Light-duty ———
Medium-duty ——— Unimproved dirt ———
U.S. Route ——— State Route ———

CANTON EAST, OHIO
SE/4 CANTON 15' QUADRANGLE
N4045—W8115/7.5

U.S.G.S.
FILE COPY
TOPOGRAPHIC DIVISION

1958

MAR 10 1960

4085