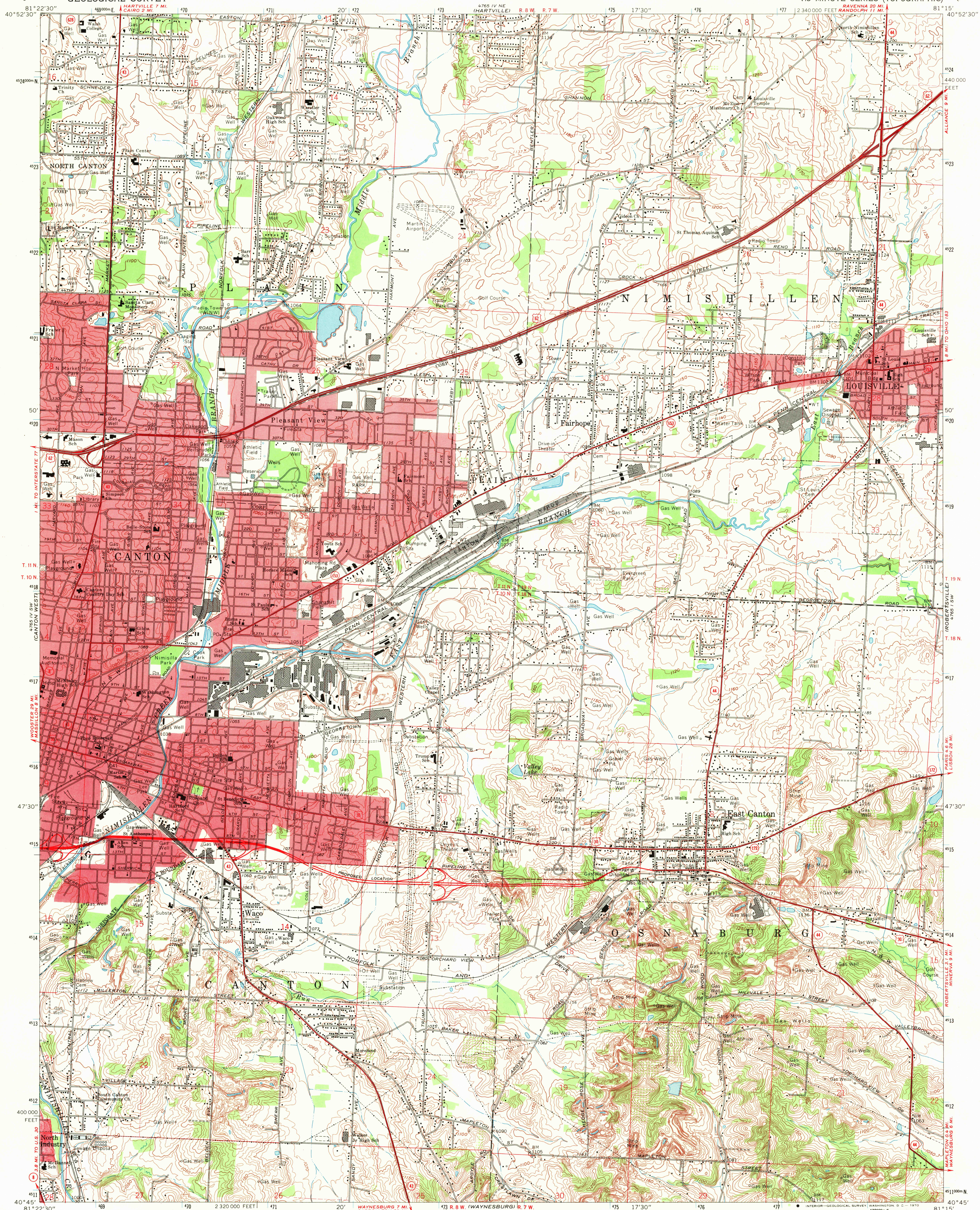


UNITED STATES
DEPARTMENT OF THE INTERIOR
GEOLOGICAL SURVEY

CANTON EAST QUADRANGLE
OHIO—STARK CO.
7.5 MINUTE SERIES (TOPOGRAPHIC)

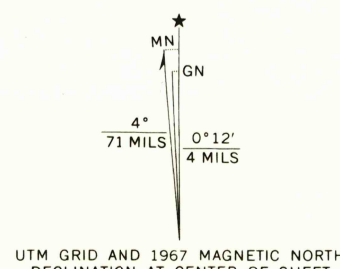


Maped, edited, and published by the Geological Survey
Revised in cooperation with State of Ohio agencies
Control by USGS and USC&GS

Topography by photogrammetric methods from aerial photographs
taken 1957. Field checked 1958. Revised from aerial
photographs taken 1966. Field checked 1967

Polyconic projection. 1927 North American datum
10,000-foot grid based on Ohio coordinate system, north zone
1000-meter Universal Transverse Mercator grid ticks,
zone 17, shown in blue

Fine red dashed lines indicate selected fence and field lines where
generally visible on aerial photographs. This information is unchecked
Red tint indicates areas in which only landmark buildings are shown
Entire area lies within Congress Lands north of the Old Seven Ranges
Land lines based on the Ohio River Base



SCALE 1:24,000
CONTOUR INTERVAL 10 FEET
DATUM IS MEAN SEA LEVEL

USGS
Historical File
Topographic Division



U.S.G.S.
FILE COPY
TOPOGRAPHIC DIVISION

ROAD CLASSIFICATION
Primary highway, all weather, improved surface
Light-duty road, all weather, improved surface
Unimproved road, fair or dry weather
U. S. Route
State Route

CANTON EAST, OHIO
N4045—W8115/7.5

1967
AMS 4765 IV SE—SERIES V852

3535

MAY 25 1970