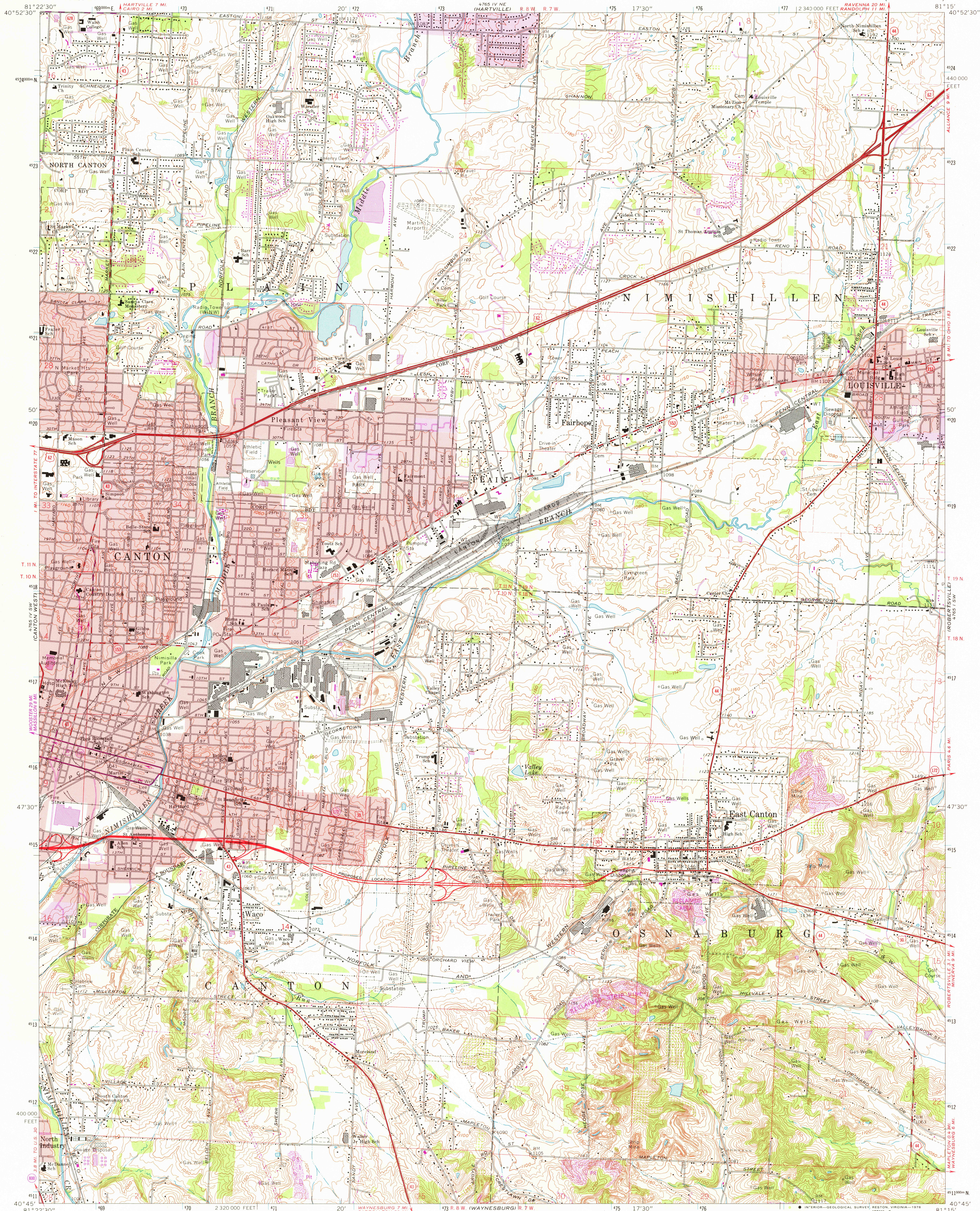


UNITED STATES
DEPARTMENT OF THE INTERIOR
GEOLOGICAL SURVEY

CANTON EAST QUADRANGLE
OHIO—STARK CO.
7.5 MINUTE SERIES (TOPOGRAPHIC)



Mapped, edited, and published by the Geological Survey
Revised in cooperation with State of Ohio agencies

Control by USGS and USC&GS

Topography by photogrammetric methods from aerial photographs
taken 1957. Field checked 1958. Revised from aerial
photographs taken 1966. Field checked 1967

Polyconic projection. 1927 North American datum.
10,000-foot grid based on Ohio coordinate system, north zone
1000-meter Universal Transverse Mercator grid ticks,
zone 17, shown in blue

Fine red dashed lines indicate selected fence and field lines where
generally visible on aerial photographs. This information is unchecked

Red tint indicates areas in which only landmark buildings are shown

Entire area lies within Congress Lands north of the Old Seven Ranges
Land lines based on the Ohio River Base

UTM GRID AND 1978 MAGNETIC NORTH
DECLINATION AT CENTER OF SHEET

THIS MAP COMPLIES WITH NATIONAL MAP ACCURACY STANDARDS
FOR SALE BY U.S. GEOLOGICAL SURVEY, RESTON, VIRGINIA 22092

A FOLDER DESCRIBING TOPOGRAPHIC MAPS AND SYMBOLS IS AVAILABLE ON REQUEST

Revisions shown in purple compiled in cooperation with
State of Ohio agencies from aerial photographs taken
1976. Map edited 1978. This information not field checked
Purple tint indicates extension of urban areas

ROAD CLASSIFICATION
Primary highway, hard surface
Secondary highway, hard surface
Unimproved road
Light-duty road, hard or improved surface
U.S. Route
State Route

USGS
Historical File
Topographic Division

JUL 2 1 1978

CANTON EAST, OHIO

N4045—W8115/7.5

1967
PHOTO-REVISED 1978
AMS 4765 IV SE—SERIES V852