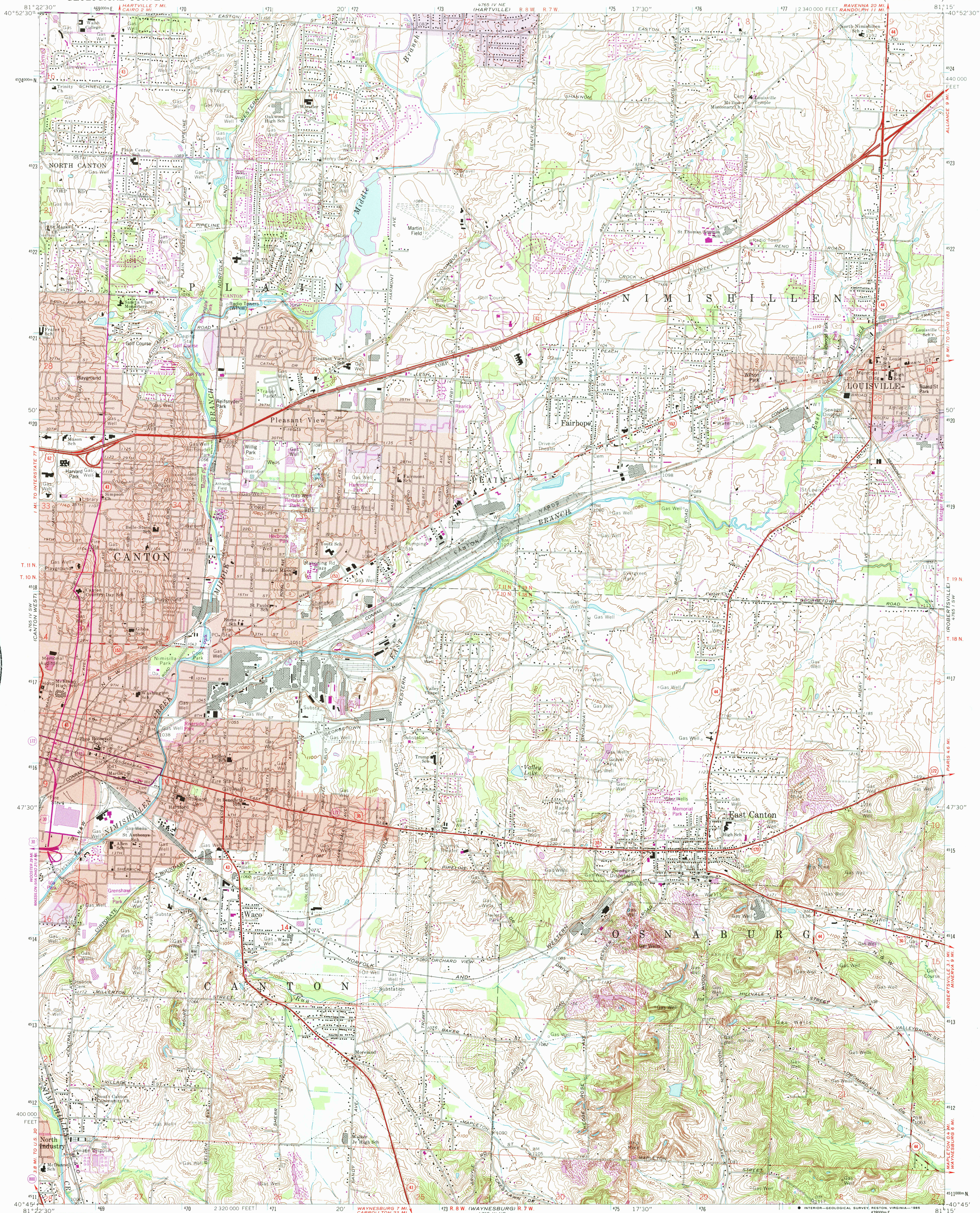


UNITED STATES
DEPARTMENT OF THE INTERIOR
GEOLOGICAL SURVEY

CANTON EAST QUADRANGLE
OHIO—STARK CO.
7.5 MINUTE SERIES (TOPOGRAPHIC)



OCT 18 1985

REFERENCE COLLECTION

Mapped, edited, and published by the Geological Survey
Revised in cooperation with State of Ohio agencies
Control by USGS and NOS/NOAA
Topography by photogrammetric methods from aerial photographs
taken 1957. Field checked 1958. Revised from aerial
photographs taken 1966. Field checked 1967.
Polyconic projection. 10,000-foot grid ticks based on Ohio
coordinate system, north zone
1000-meter Universal Transverse Mercator grid ticks,
zone 17, shown in blue
1927 North American Datum
To place on the predicted North American Datum 1983
move the projection lines 3 meters south and
14 meters west as shown by dashed corner ticks
Fine red dashed lines indicate selected fence and field lines where
generally visible on aerial photographs. This information is unchecked
Red tint indicates areas in which only landmark buildings are shown
Entire area lies within Congress Lands north of the Old Seven Ranges
Land lines based on the Ohio River Base

UTM GRID AND 1985 MAGNETIC NORTH
DECLINATION AT CENTER OF SHEET

SCALE 1:24,000
CONTOUR INTERVAL 10 FEET
NATIONAL GEODETIC VERTICAL DATUM OF 1929



ROAD CLASSIFICATION
Primary highway, hard surface
Secondary highway, hard surface
Unimproved road
Interstate Route
U. S. Route
State Route

CANTON EAST, OHIO
40081-G3-TF-024

1967
PHOTOREVISED 1985
DMA 4765 IV SE—SERIES V852

THIS MAP COMPLIES WITH NATIONAL MAP ACCURACY STANDARDS
FOR SALE BY U.S. GEOLOGICAL SURVEY, RESTON, VIRGINIA 22092
A FOLDER DESCRIBING TOPOGRAPHIC MAPS AND SYMBOLS IS AVAILABLE ON REQUEST

Revisions shown in purple and woodland compiled in
cooperation with State of Ohio agencies from aerial
photographs taken 1982 and other sources. This
information not field checked. Map edited 1985
Purple tint indicates extension of urban areas