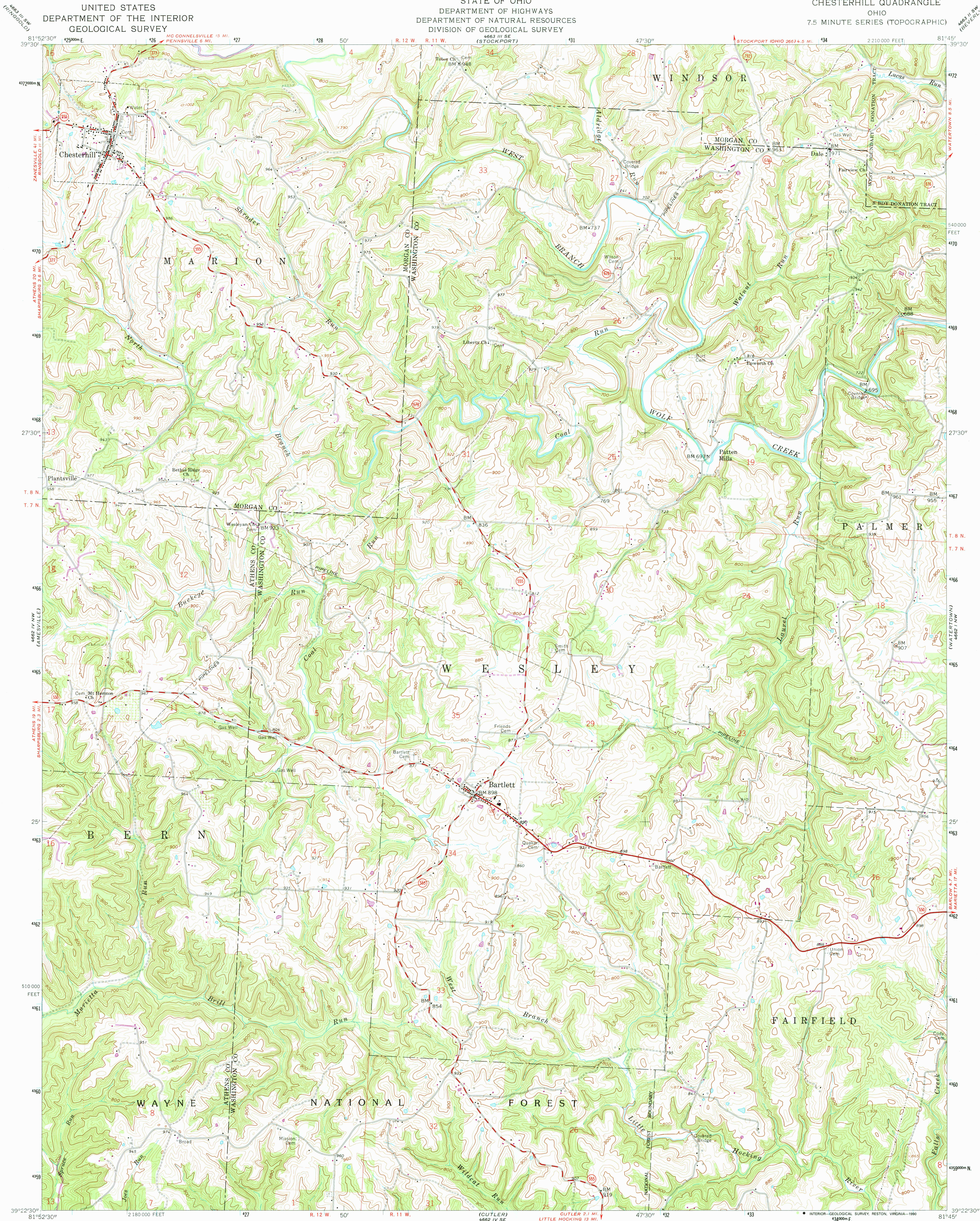


UNITED STATES  
DEPARTMENT OF THE INTERIOR  
GEOLOGICAL SURVEY

STATE OF OHIO  
DEPARTMENT OF HIGHWAYS  
DEPARTMENT OF NATURAL RESOURCES  
DIVISION OF GEOLOGICAL SURVEY

CHESTERHILL QUADRANGLE  
OHIO  
7.5 MINUTE SERIES (TOPOGRAPHIC)



Mapped, edited, and published by the Geological Survey

Control by USGS and USC&GS

Topography by photogrammetric methods from aerial

photographs taken 1960. Field checked 1961

Polyconic projection. 1927 North American datum  
10,000-foot grid based on Ohio coordinate system, south zone  
1000-meter Universal Transverse Mercator grid ticks,  
zone 17, shown in blue

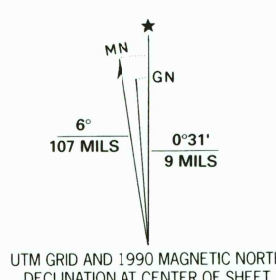
Fine red dashed lines indicate selected fence and field lines where  
generally visible on aerial photographs. This information is unchecked

Land lines based on the Ohio River Base. Dotted land lines established  
by private subdivision of the Ohio Company Purchase

Unlabeled wells are oil wells

There may be private inholdings within the boundaries of  
the National or State reservations shown on this map

To place on the predicted North American Datum 1983,  
move the projection lines 5 meters south and  
13 meters west as shown by dashed corner ticks



SCALE 1:24,000

CONTOUR INTERVAL 20 FEET  
NATIONAL GEOGRAPHIC VERTICAL DATUM OF 1929

THIS MAP COMPLIES WITH NATIONAL MAP ACCURACY STANDARDS  
FOR SALE BY U.S. GEOLOGICAL SURVEY  
DENVER, COLORADO 80225, OR RESTON, VIRGINIA 22092  
A FOLDER DESCRIBING TOPOGRAPHIC MAPS AND SYMBOLS IS AVAILABLE ON REQUEST

Revisions shown in purple compiled in cooperation with  
U.S. Forest Service from aerial photographs taken 1984 and other  
sources. Partially field checked by U.S. Forest Service. Map edited 1990

ROAD CLASSIFICATION

Heavy-duty ——— Light-duty ———  
Medium-duty ——— Unimproved dirt ———  
U.S. Route ——— State Route ———



CHESTERHILL, OHIO  
39081-07-TF-024

1961  
PHOTOREVISED 1990  
DMA 4662 IV NE - SERIES V852

REC'D FILE COPY  
JUN 28 1990  
U.S. GEOLOGICAL SURVEY