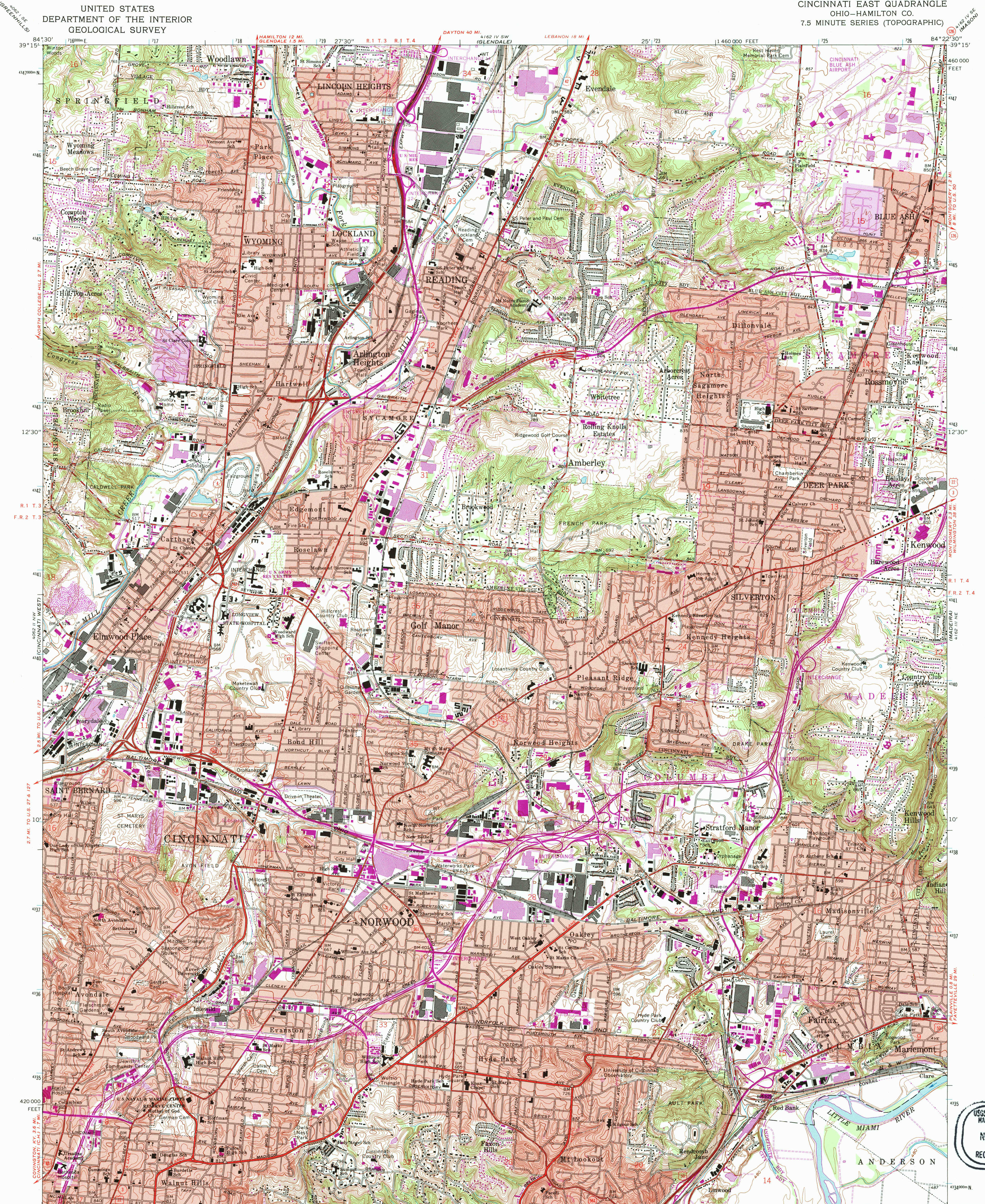


UNITED STATES
DEPARTMENT OF THE INTERIOR
GEOLOGICAL SURVEY

CINCINNATI EAST QUADRANGLE
OHIO—HAMILTON CO.
7.5 MINUTE SERIES (TOPOGRAPHIC)



USGS AND HISTORICAL
MAP ARCHIVES
NOV 03 1995
REC'D FILE COPY

Mapped, edited, and published by the Geological Survey
Control by USGS, NOS/NOAA, USCE, and City of Cincinnati
Topography by photogrammetric methods from aerial photographs
taken 1949 and in part by City of Cincinnati. Field checked
1953. Revised 1961.

Polyconic projection. 10,000-foot grid ticks based on Ohio
coordinate system, south zone. 1000-meter Universal Transverse
Mercator grid ticks, zone 16, shown in blue. 1927 North
American Datum. To place on the predicted North American
Datum 1983 move the projection lines 3 meters south and
6 meters west as shown by dashed corner ticks.

Red tint indicates areas in which only landmark buildings are shown
Area east of the Little Miami River lies within the Virginia Military
District. Area west of the Little Miami River lies within the Between
the Rivers. Land lines based on the Great Miami River Base. Dotted
land lines established by private subdivision of the Symmes Purchase.
There may be private inholdings within the boundaries of
the National or State reservations shown on this map.

UTM GRID AND 1981 MAGNETIC NORTH
DECLINATION AT CENTER OF SHEET

SCALE 1:24,000
CONTOUR INTERVAL 10 FEET
NATIONAL GEODETIC VERTICAL DATUM OF 1929

ROAD CLASSIFICATION
Heavy-duty ——— Light-duty ———
Medium-duty ——— Unimproved dirt ———
Interstate Route U.S. Route State Route

CINCINNATI EAST, OHIO
39084-B4-F024
1961
PHOTOREVISED 1981
DMA 4162 III NW—SERIES V852

THIS MAP COMPLIES WITH NATIONAL MAP ACCURACY STANDARDS
FOR SALE BY U.S. GEOLOGICAL SURVEY
DENVER, COLORADO 80225, OR RESTON, VIRGINIA 22092
A FOLDER DESCRIBING TOPOGRAPHIC MAPS AND SYMBOLS IS AVAILABLE ON REQUEST

Revisions shown in purple and woodlawn compiled in cooperation
with State of Ohio agencies from aerial photographs taken 1979
and other sources. This information not field checked. Map edited 1981.
Purple tint indicates extension of urban areas.

QUADRANGLE LOCATION

9780607 422061