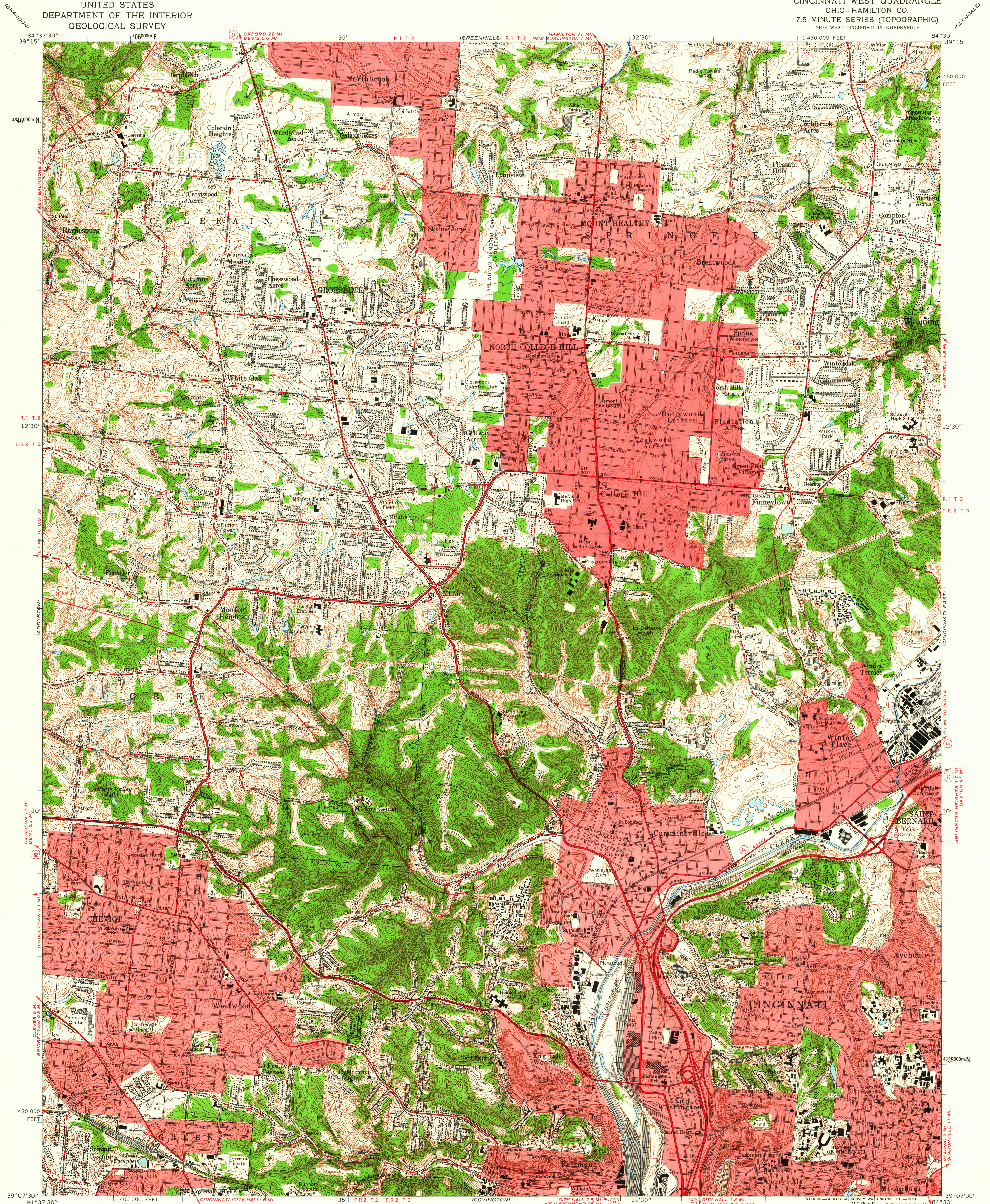


UNITED STATES
DEPARTMENT OF THE INTERIOR
GEOLOGICAL SURVEY

CINCINNATI WEST QUADRANGLE
OHIO—HAMILTON CO.
7.5 MINUTE SERIES (TOPOGRAPHIC)
NE/4 WEST CINCINNATI 15 QUADRANGLE



Mapped, edited, and published by the Geological Survey
Control by USGS, USC&GS, and City of Cincinnati
Topography by photogrammetric methods from aerial photographs
taken 1949 and in part by City of Cincinnati
Field checked 1953. Revised 1961
Polyconic projection. 1927 North American datum
10,000-foot grid based on Ohio coordinate system, south zone
1000-meter Universal Transverse Mercator grid ticks,
zone 16, shown in blue
Red tint indicates areas in which only landmark buildings are shown
Entire area lies within the Between the Miamis
Land lines based on the Great Miami River Base
Dotted land lines established by private subdivision of the Symmes Purchase

TRUE NORTH
MAGNETIC NORTH
APPROXIMATE MEAN
DECLINATION, 1961

SCALE 1:24,000
CONTOUR INTERVAL 10 FEET
DATUM IS MEAN SEA LEVEL
THIS MAP COMPLIES WITH NATIONAL MAP ACCURACY STANDARDS
FOR SALE BY U.S. GEOLOGICAL SURVEY, WASHINGTON 25, D. C.
A FOLDER DESCRIBING TOPOGRAPHIC MAPS AND SYMBOLS IS AVAILABLE ON REQUEST

ROAD CLASSIFICATION
Heavy-duty ——— Light-duty ———
Medium-duty ——— Unimproved dirt ———
Interstate Route ——— U.S. Route ——— State Route ———
CINCINNATI WEST, OHIO
NE/4 WEST CINCINNATI 15 QUADRANGLE
N3907.5—W8430.7.5
1961

NOV - 5 1961