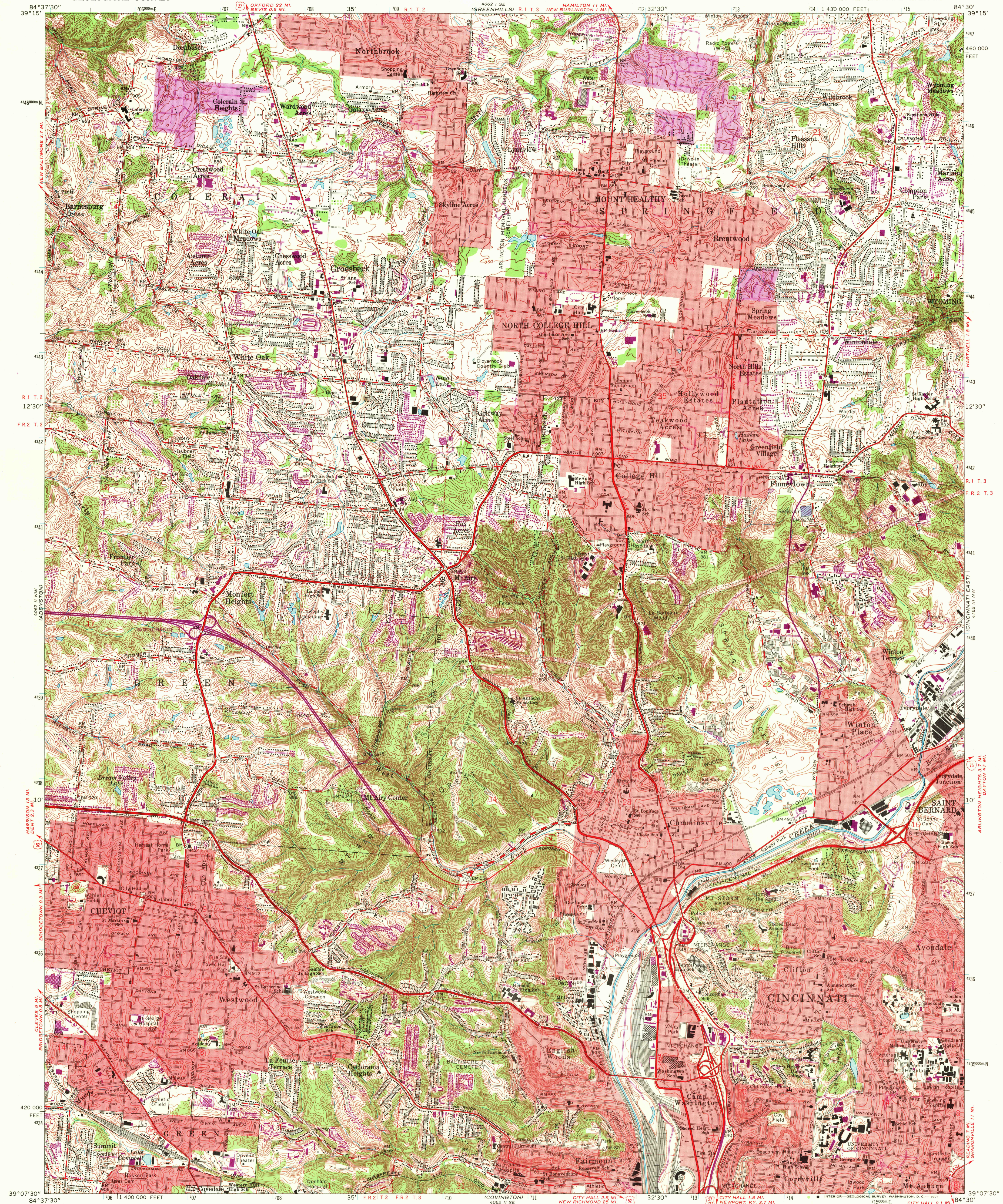


UNITED STATES  
DEPARTMENT OF THE INTERIOR  
GEOLOGICAL SURVEY

CINCINNATI WEST QUADRANGLE  
OHIO—HAMILTON CO.  
7.5 MINUTE SERIES (TOPOGRAPHIC)  
NE/4 WEST CINCINNATI 15' QUADRANGLE



Mapped, edited, and published by the Geological Survey

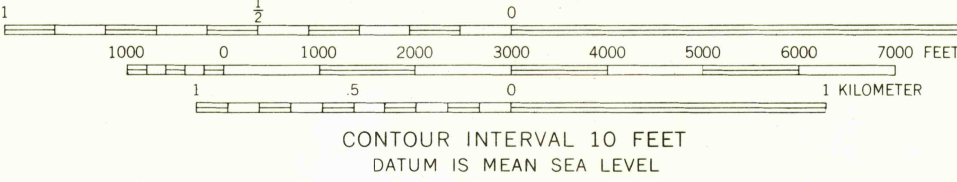
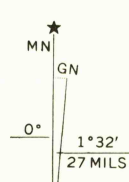
Control by USGS, USC&GS, and City of Cincinnati

Topography by photogrammetric methods from aerial photographs taken 1949 and in part by City of Cincinnati  
Field checked 1953. Revised 1961

Polycyclic projection. 1927 North American datum  
10,000-foot grid based on Ohio coordinate system, south zone  
1000-meter Universal Transverse Mercator grid ticks,  
zone 16, shown in blue

Red tint indicates areas in which only landmark buildings are shown

Entire area lies within the Between the Miamis  
Land lines based on the Great Miami River Base  
Dotted land lines established by private subdivision of the Symmes Purchase



ROAD CLASSIFICATION  
Heavy-duty ——— Light-duty ———  
Medium-duty ——— Unimproved dirt ———  
Interstate Route U.S. Route State Route

CINCINNATI WEST, OHIO  
NE/4 WEST CINCINNATI 15' QUADRANGLE  
N3907.5—W8430.7.5

1961  
PHOTO-REVISED 1970  
AMS 4062 II NE—SERIES V852

3540  
OCT 1 1971

USGS  
HISTORICAL FILE  
TOPOGRAPHIC DIVISION

Revisions shown in purple compiled in cooperation with  
State of Ohio agencies from aerial photographs taken  
1970. This information not field checked  
Purple tint indicates extension of urban areas