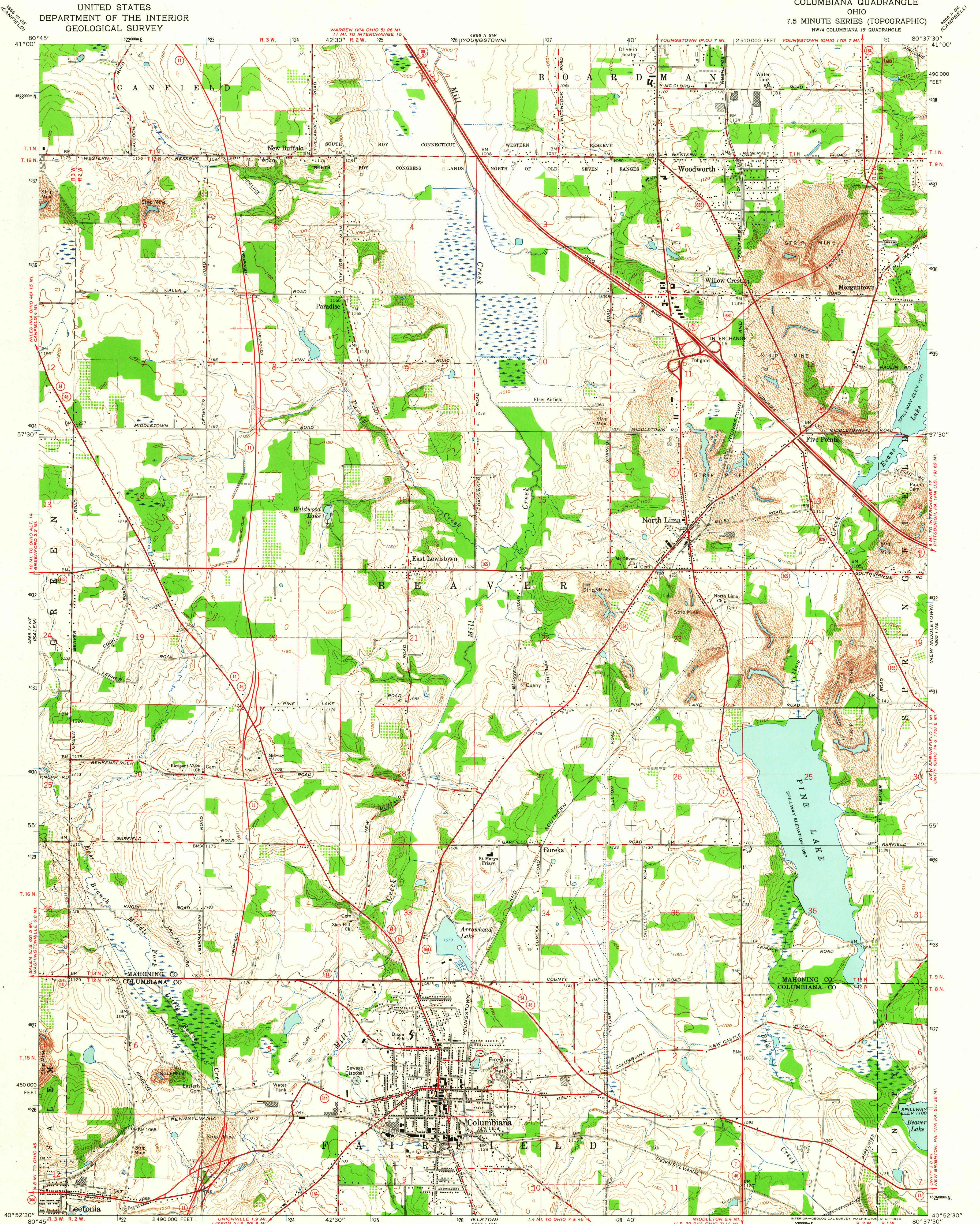
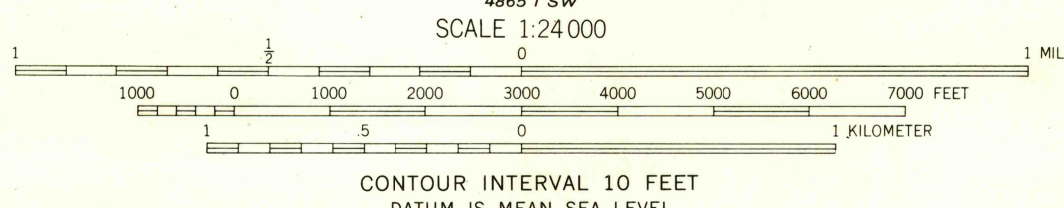
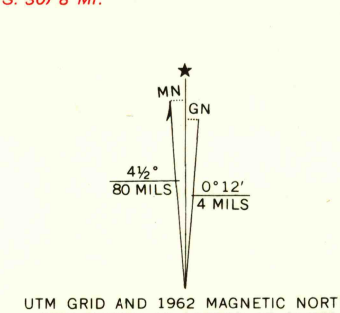


UNITED STATES
DEPARTMENT OF THE INTERIOR
GEOLOGICAL SURVEY

COLUMBIANA QUADRANGLE
OHIO
7.5 MINUTE SERIES (TOPOGRAPHIC)
NW/4 COLUMBIANA 15' QUADRANGLE



Maped, edited, and published by the Geological Survey in cooperation with County of Mahoning. Revised in cooperation with State of Ohio agencies. Control by USGS, USC&GS, and County of Mahoning. Topography by photogrammetric methods from aerial photographs taken 1950. Field checked 1951. Revised by photogrammetric methods from aerial photographs taken 1962. Field checked 1962. Polyconic projection. 1927 North American datum. 10,000-foot grid based on Ohio coordinate system, north zone. 1000-meter Universal Transverse Mercator grid ticks, zone 17, shown in blue. Fine red dashed lines indicate selected fence and field lines where generally visible on aerial photographs. This information is unchecked. Land lines within the Connecticut Western Reserve established by private subdivision. Land lines within Congress Lands North of the Old Seven Ranges based on the Ohio River Base.



ROAD CLASSIFICATION

Heavy-duty	Light duty
Medium-duty	Unimproved dirt
Interstate Route	State Route

U.S.G.S. COLUMBIANA, OHIO
NW/4 COLUMBIANA 15' QUADRANGLE
N4052.5-W8037.5/7.5
1962
AMS 4865 I NW-SERIES V852

THIS MAP COMPLIES WITH NATIONAL MAP ACCURACY STANDARDS
FOR SALE BY U.S. GEOLOGICAL SURVEY, WASHINGTON 25, D. C.
A FOLDER DESCRIBING TOPOGRAPHIC MAPS AND SYMBOLS IS AVAILABLE ON REQUEST