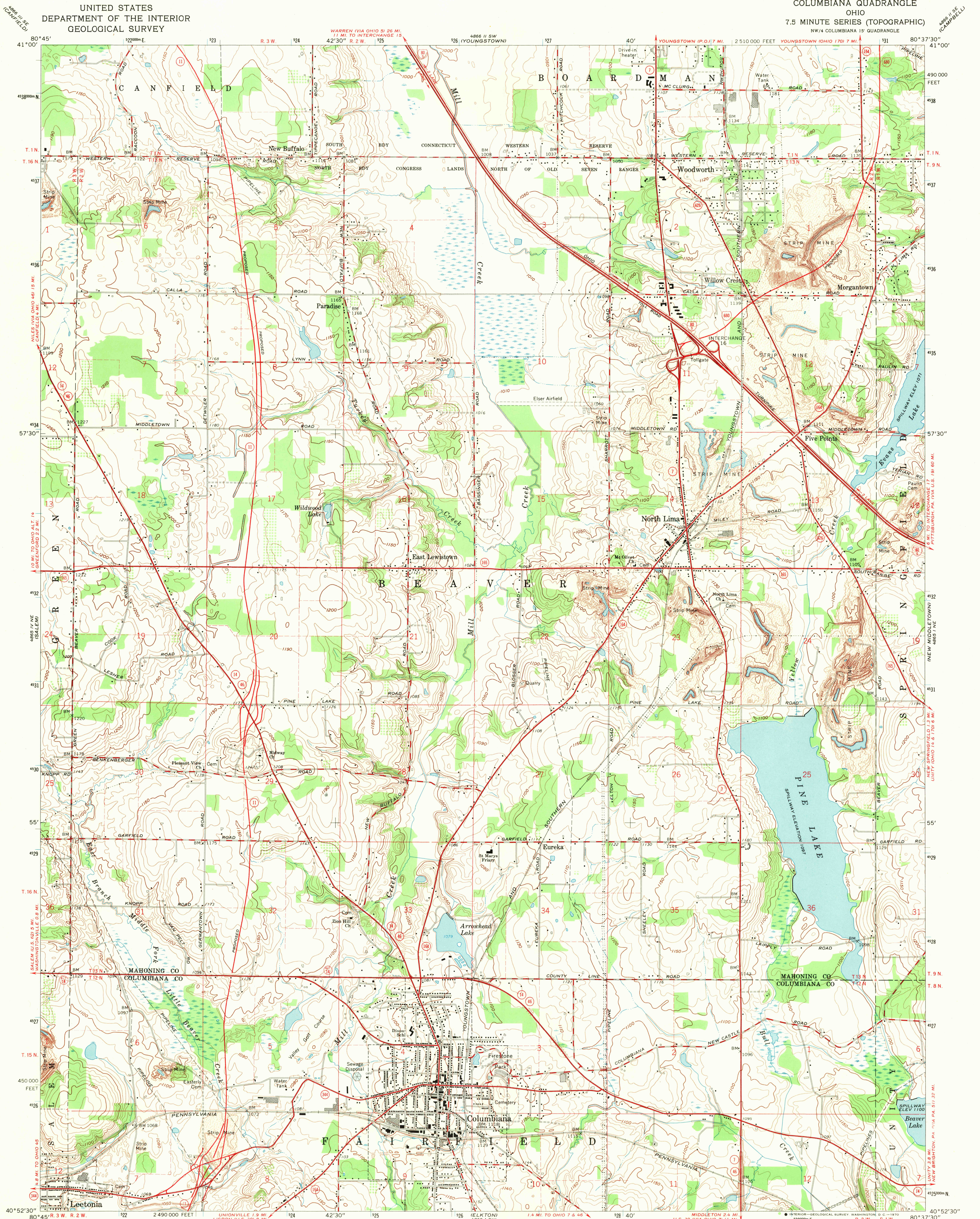
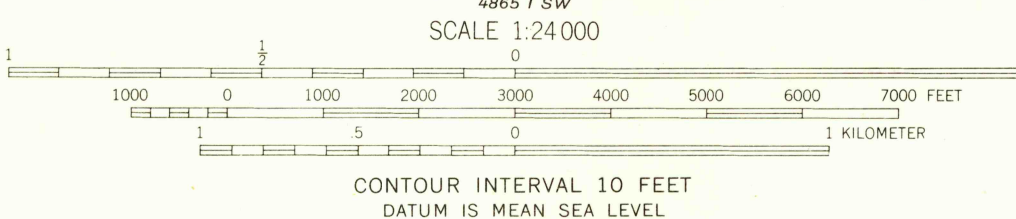
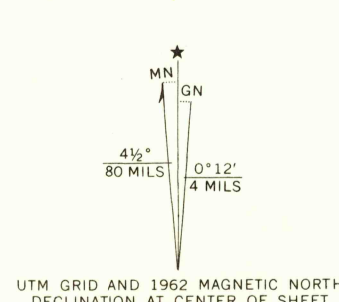


UNITED STATES  
DEPARTMENT OF THE INTERIOR  
GEOLOGICAL SURVEY

COLUMBIANA QUADRANGLE  
OHIO  
7.5 MINUTE SERIES (TOPOGRAPHIC)  
NW/4 COLUMBIANA 15' QUADRANGLE



Mapped, edited, and published by the Geological Survey  
in cooperation with County of Mahoning.  
Revised in cooperation with State of Ohio agencies  
Control by USGS, USC&GS, and County of Mahoning  
Topography by photogrammetric methods from aerial photographs  
taken 1950. Field checked 1951. Revised by photogrammetric  
methods from aerial photographs taken 1962. Field checked 1962  
Polyconic projection. 1927 North American datum  
10,000-foot grid based on Ohio coordinate system, north zone  
1000-meter Universal Transverse Mercator grid ticks,  
zone 17, shown in blue  
Fine red dashed lines indicate selected fence and field lines where  
generally visible on aerial photographs. This information is unchecked  
Land lines within the Connecticut Western Reserve established by  
private subdivision. Land lines within Congress Lands North of the  
Old Seven Ranges based on the Ohio River Base



THIS MAP COMPLIES WITH NATIONAL MAP ACCURACY STANDARDS  
FOR SALE BY U.S. GEOLOGICAL SURVEY, WASHINGTON, D.C. 20242  
A FOLDER DESCRIBING TOPOGRAPHIC MAPS AND SYMBOLS IS AVAILABLE ON REQUEST

USGS  
Historical File  
Topographic Division



ROAD CLASSIFICATION  
Heavy-duty ——— Light-duty ———  
Medium-duty ——— Unimproved dirt ———  
Interstate Route ——— State Route ———

U.S.G.S.  
FILE COPY  
TOPOGRAPHIC DIVISION

COLUMBIANA, OHIO  
NW/4 COLUMBIANA 15' QUADRANGLE  
N4052.5—W8037.5/7.5  
1962  
AMS 4865 1 NW—SERIES V852

3775  
DEC 5 1962