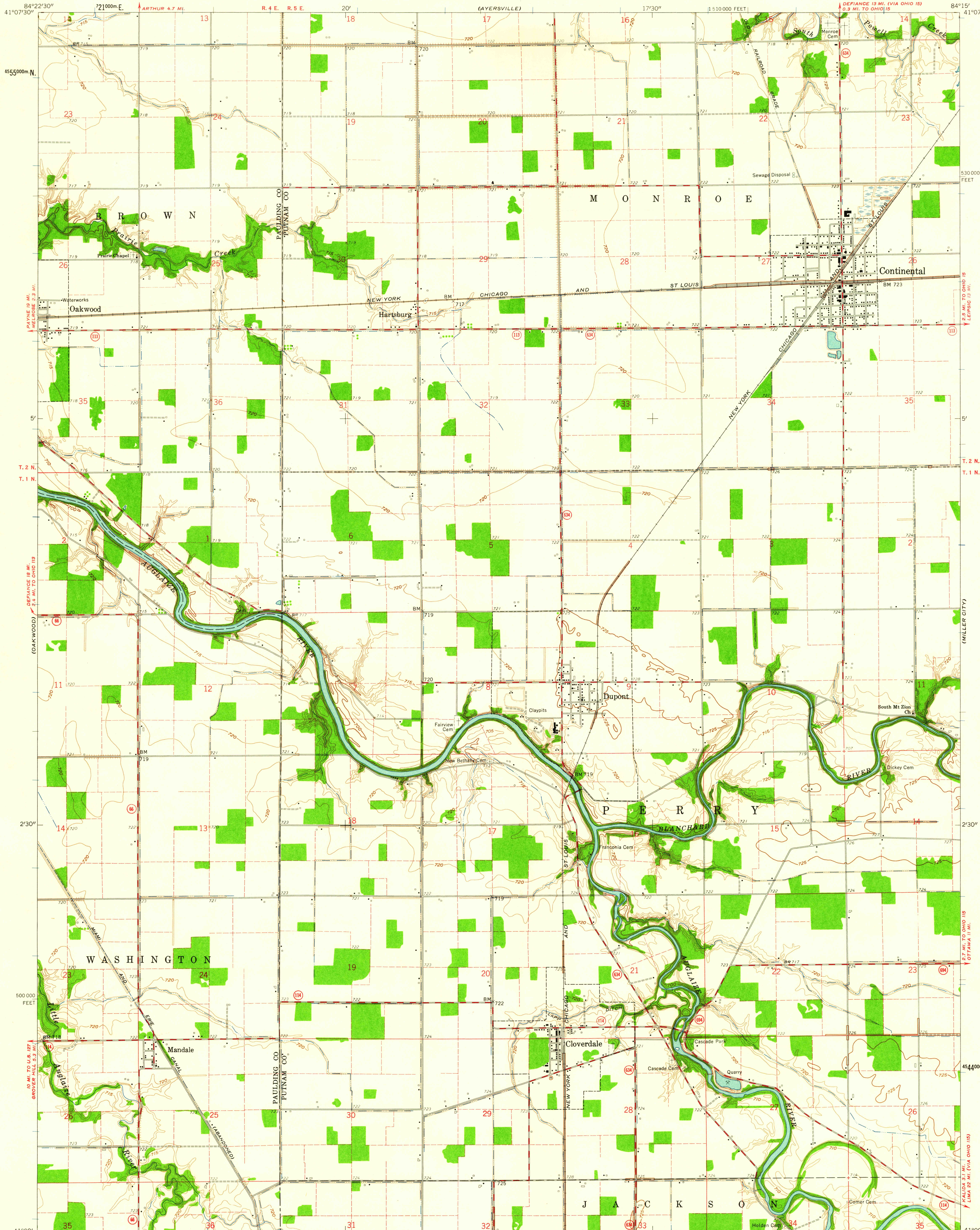


UNITED STATES
DEPARTMENT OF THE INTERIOR
GEOLOGICAL SURVEY

STATE OF OHIO
DEPARTMENT OF HIGHWAYS
DEPARTMENT OF NATURAL RESOURCES
DIVISION OF GEOLOGICAL SURVEY

CONTINENTAL QUADRANGLE
OHIO
7.5 MINUTE SERIES (TOPOGRAPHIC)

SE 1/4 CONTINENTAL 15' QUADRANGLE
DEFIANCE 13 MI. (VIA OHIO 15)
3.9 MI. TO OHIO 15



Mapped, edited, and published by the Geological Survey

Control by USGS and USC&GS

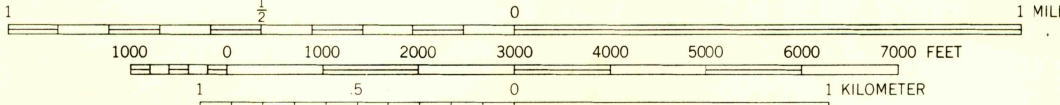
Culture and drainage in part compiled from aerial photographs taken 1959. Topography by planetable surveys 1960

Polyconic projection. 1927 North American datum. 10,000-foot grid based on Ohio coordinate system, north zone 1000-meter Universal Transverse Mercator grids ticks, zone 16, shown in blue

Entire area lies within Congress Lands
Land lines based on the First Principal Meridian

Fine red dashed lines indicate selected fence and field lines where generally visible on aerial photographs. This information is unchecked

15°
MAGNETIC NORTH
APPROXIMATE MEAN
DECLINATION, 1960



CONTOUR INTERVAL 5 FEET
DATUM IS MEAN SEA LEVEL

THIS MAP COMPLIES WITH NATIONAL MAP ACCURACY STANDARDS
FOR SALE BY U. S. GEOLOGICAL SURVEY, WASHINGTON 25, D. C.
A FOLDER DESCRIBING TOPOGRAPHIC MAPS AND SYMBOLS IS AVAILABLE ON REQUEST

USGS
Historical File
Topographic Division



ROAD CLASSIFICATION
Medium-duty ——— Light-duty ———
Unimproved dirt ———
State Route

U.S.G.S.
FILE COPY
TOPOGRAPHIC DIVISION

CONTINENTAL, OHIO
SE 1/4 CONTINENTAL 15' QUADRANGLE
N4100—W8415/7.5

1960

2205 OCT 2 6 1961